

NO. E1CL-3355

ISSUED: JUN.2010

REVISED: DEC.2011

SERVICE INFORMATION

: HE-11019,HE-11022



HOSHIZAKI MODULAR CUBER

**MODEL IM-240DWNE
 IM-240DWNE-C
 IM-240DWNE-21,-23,-32
 IM-240XWNE
 IM-240XWNE-21,-23,-32**

PARTS LIST

[HE, GENERAL (50Hz) (60Hz), HSP, AUSTRALIA, KOREA, CHINA]

K-1 JUN. 2010

A-0 JAN. 2011

AUXILIARY CODE

U - 1

The auxiliary code is the first two characters in the serial number. The first character indicates the production year. Years progress or regress in alphabetical order. The series of letters and skipped letters depend on UL listing, production, and model. See the auxiliary code(s) and corresponding year(s) on the front cover.

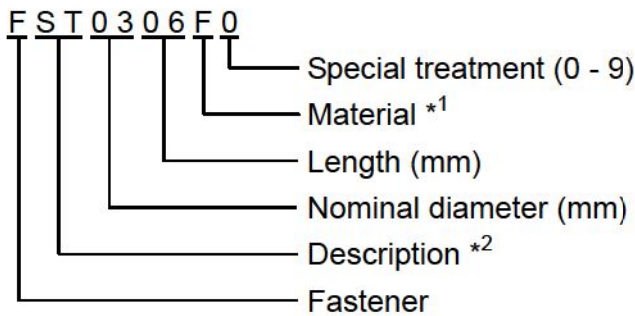
The second character indicates significant part changes within the same year. Base is "1" and this number advances for each change. If there is no significant part change at the turn of the year, this number starts from "0."

MARKS LOCATED UNDER THE AUXILIARY CODE

- = Part deleted.
- x = Part deleted and replaced by "o" part.
- o = New part in place of "x" part.

FASTENER PART NUMBER

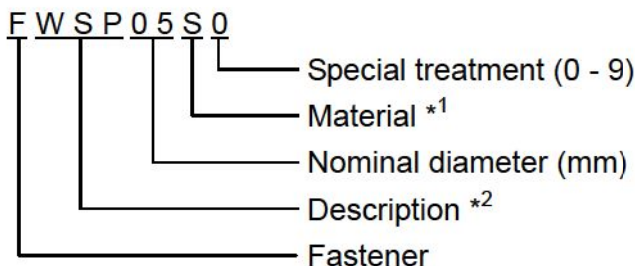
SCREWS



*1 Material

- F: Steel
- S: Austenitic stainless steel
- M: Martensitic stainless steel
- B: Copper alloy
- P: Polycarbonate
- N: Polyamide
- V: PVC
- A: ABS
- X: Polyacetal
- L: Aluminum

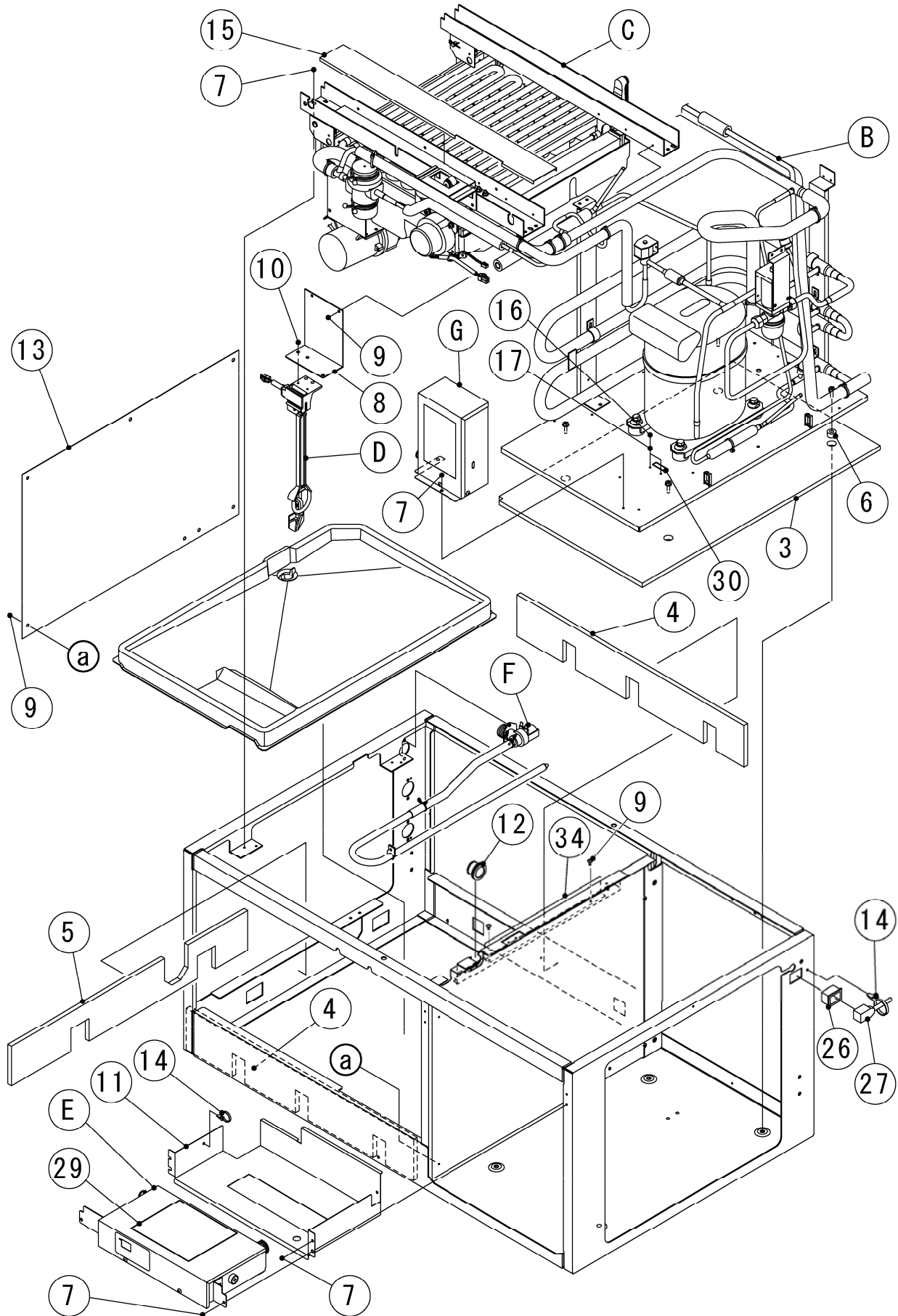
NUTS & WASHERS



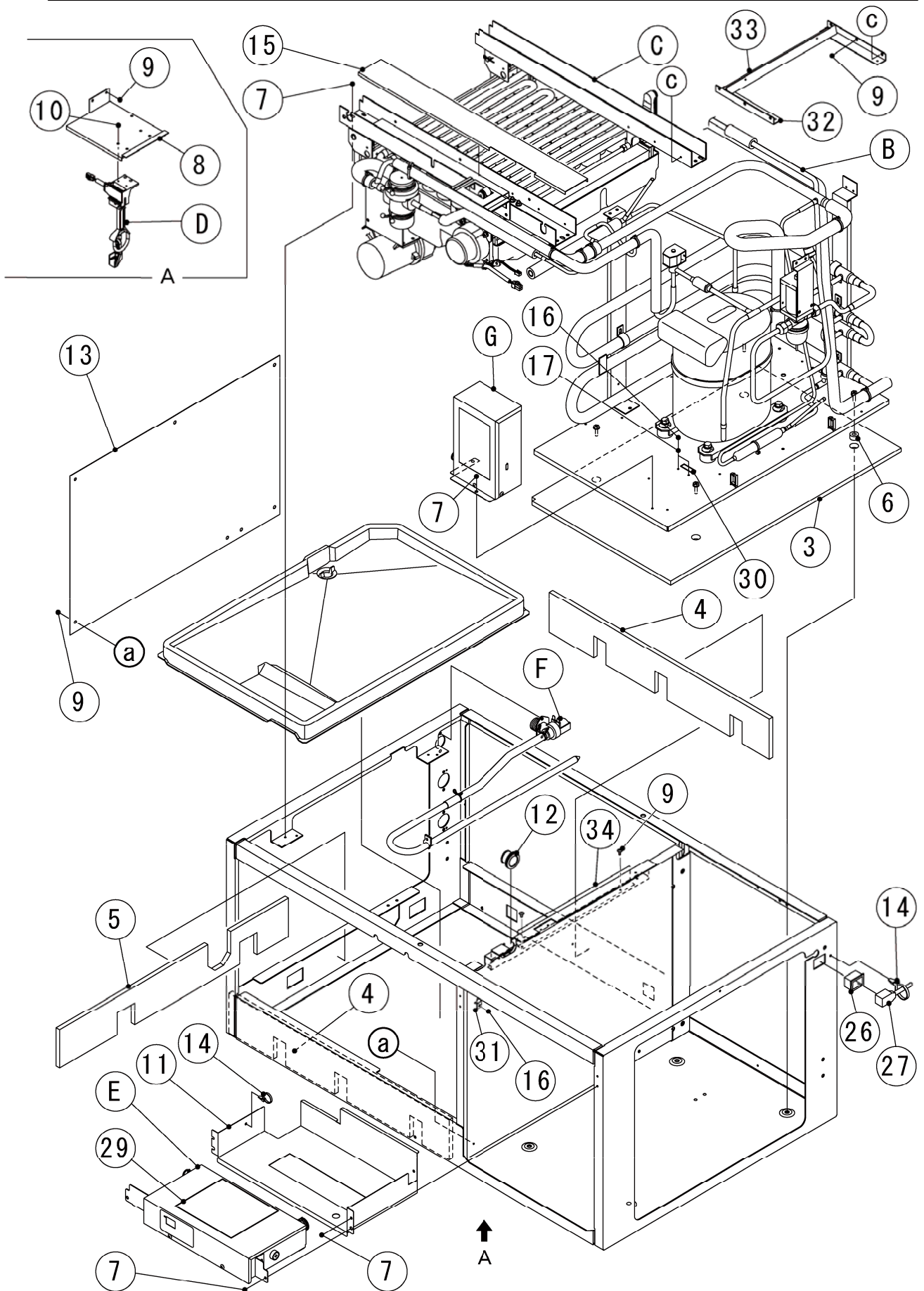
*2 Description

- First letter
- S: Machine screw
- T: Tapping screw
- M: Wood screw
- B: Bolt
- W: Washer
- N: Nut

A. ICE CUBER ASSY (1/2) (K-1) and later

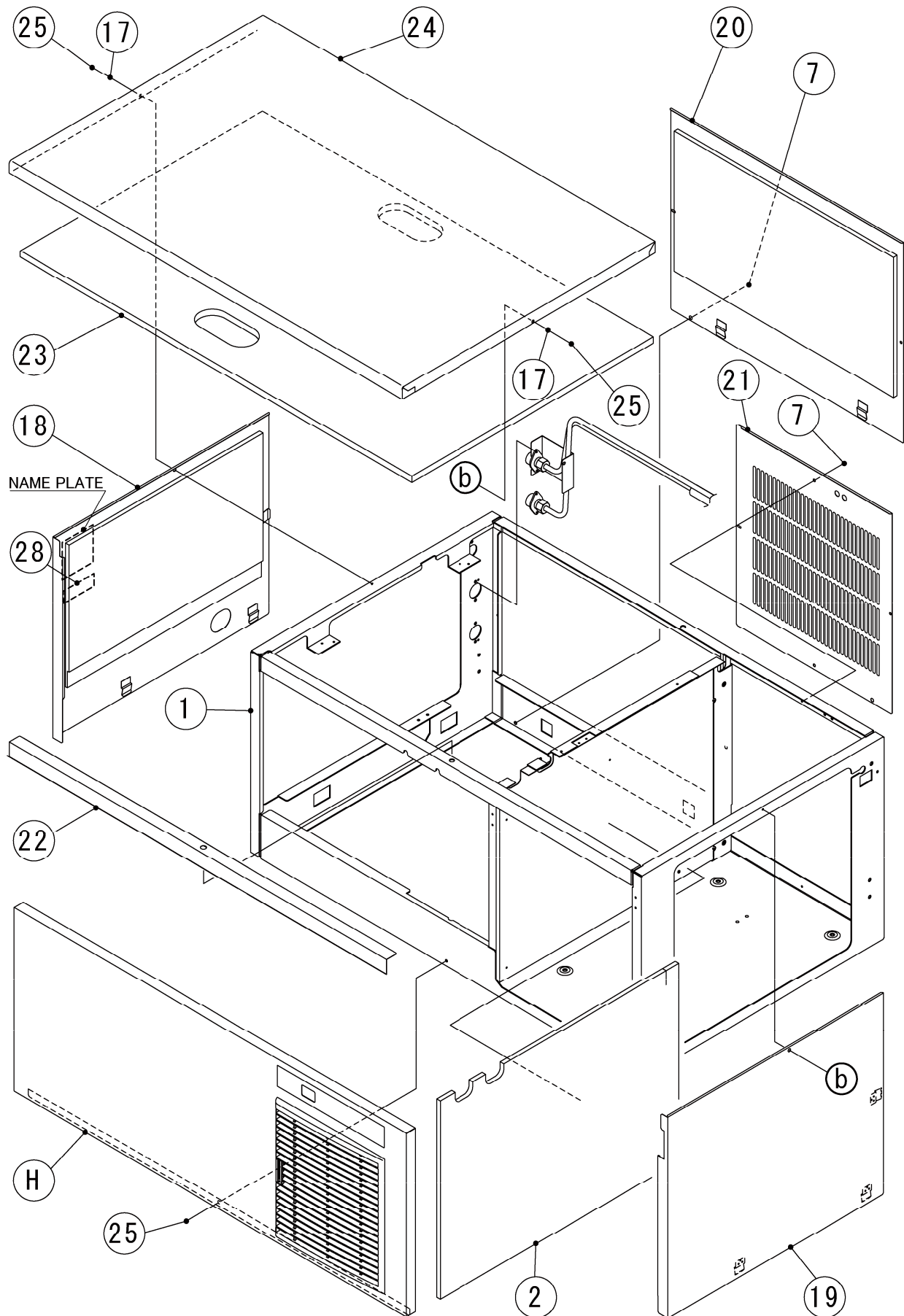


A. ICE CUBER ASSY (1/2) (K-1) and later



IM-240DWNE (-C, -21, -23, -32)
IM-240XWNE (-21, -23, -32)

A. ICE CUBER ASSY (2/2) (K-1) and later



HE,GENERAL(50Hz)(60Hz),HSP,AUSTRALIA,KOREA,CHINA

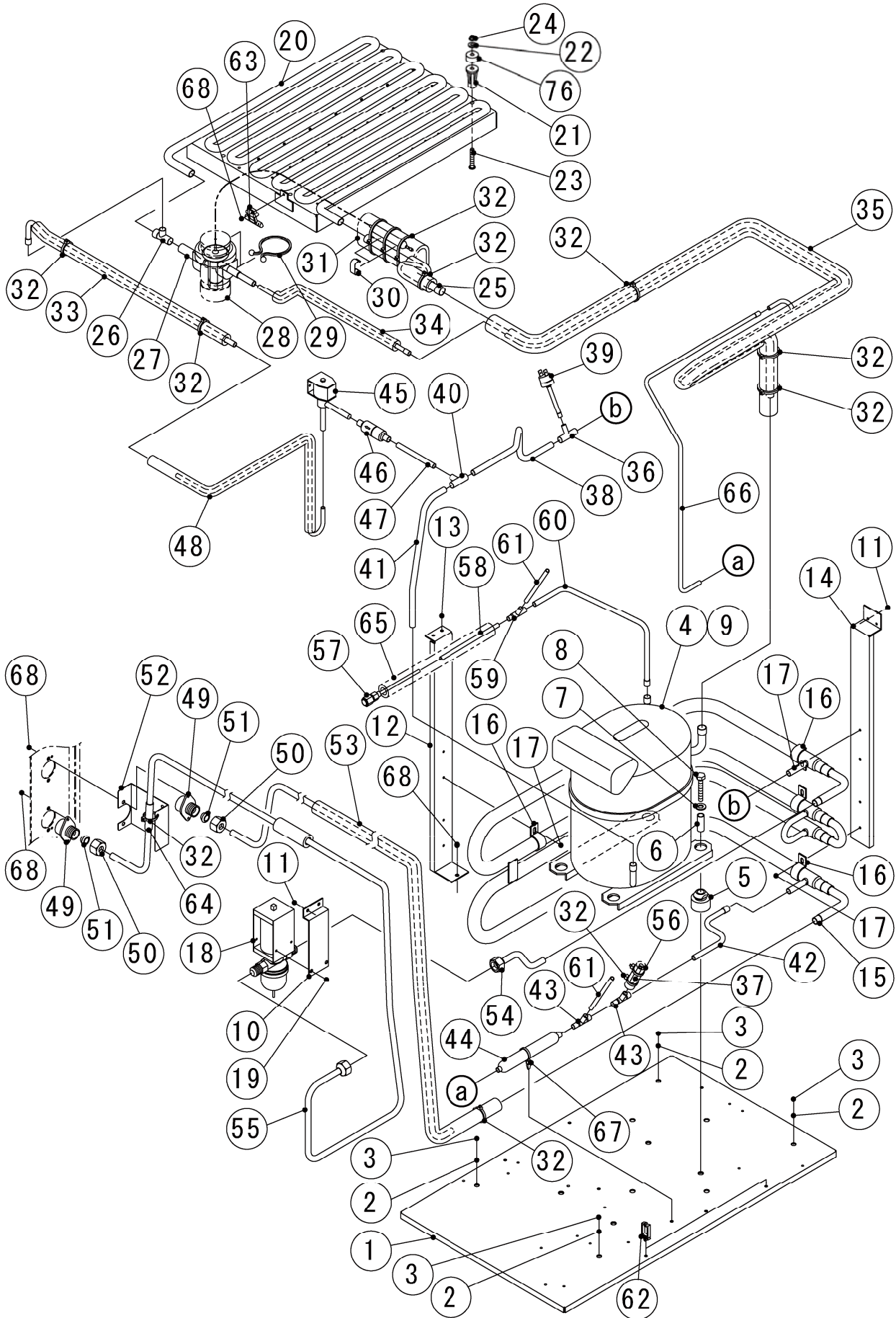
MODEL : IM-240DWNE(-C,-21,-23,-32) IM-240XWNE(-21,-23,-32)		TITLE : A. ICE CUBER ASSY					
INDEX NO.	DESCRIPTION	MATERIAL OR MODEL NUMBER	PART NUMBER	REQ'D NUMBER			
				K-1 A-0			
B	REFRIGERATION ASSY	(240DWNE,XWNE)	1H4683A01	1			
		(240DWNE-C)	1H4702A01	1			
		(240DWNE-21,XWNE-21)	1H4683003	1			
		(240DWNE-23,XWNE-23)	1H4683001	1			
		(240DWNE-32,XWNE-32)	1H4683002	1			
		(240DWNE,XWNE KOREA,GENERAL 60Hz)	1H4683004	1			
		(240DWNE-21, XWNE-21 KOREA, GENERAL 60Hz)	1H4683005	1			
C	MECHANISM ASSY	(240DWNE,DWNE-23, 240XWNE,XWNE-23)	1H4669A01	1			
		(240DWNE-C)	1H4679A01	1			
		(240DWNE-21,XWNE-21)	1H4669002	1			
		(240DWNE-32,XWNE-32)	1H4669001	1			
D	BIN SWITCH ASSY	(240DWNE,-C,-21,-23,-32)	3Y5222A01	1			
		(240XWNE,-21,-23,-32)	3Y5244A01	1			
E	CONTROL BOX ASSY		2H9968A02	1			
		(KOREA)	2H9968001	1			
		(GENERAL 60Hz)	2H9968003	1			
F	WATER CIRCUIT ASSY		2H9942A01	1			
		(240DWNE-C)	2H9942A02	1			
G	CONTROLBOX B - ASSY		3Y5105A01	1			
		(KOREA GENERAL 60Hz)	3Y5105001	1			
H	FRONT COVER		2H9972A01	1			
1	UNIT FRAME	-	1H4667G01	1			
2	INSULATION - SEPARATOR	-	3Y5008P01	1			
3	INSULATION - CHASSIS	-	4Y6574P01	1			
4	INSULATION - FRAME	-	4Y5945P01	2			
5	INSULATION - SIDEFAME L	-	4Y5944P01	1			
6	COLLAR	-	4H8163-01	4			
7	FLANGE BOLT (S-TITE)	-	FTR0408M0	16			
8	BRACKET - BIN CONTROL SWITCH	(240DWNE,-C,-21,-23,-32)	4Y7486M01	1			
		(240XWNE,-21,-23,-32)	4Y5943M01	1			

HE,GENERAL(50Hz)(60Hz),HSP,AUSTRALIA,KOREA,CHINA

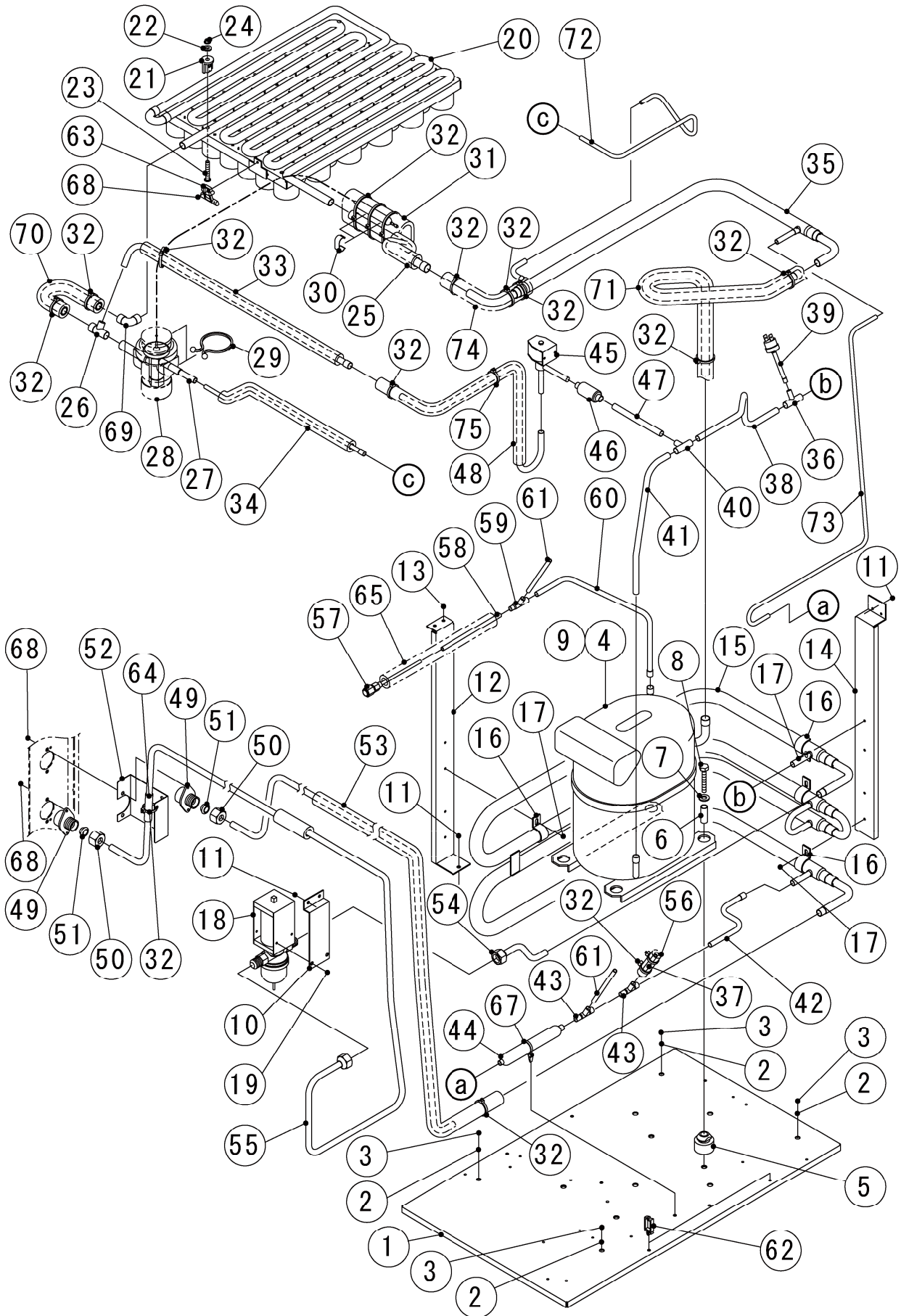
MODEL : IM-240DWNE(-C,-21,-23,-32) IM-240XWNE(-21,-23,-32)		TITLE : A. ICE CUBER ASSY					
INDEX NO.	DESCRIPTION	MATERIAL OR MODEL NUMBER	PART NUMBER	REQ'D NUMBER			
				K-1 A-0			
9	TRUSS HEAD TAPPING SCREW T2	(240DWNE,-C,-21,-23,-32)	FT20408S0	9			
		(240XWNE,-21,-23,-32)		15			
10	TRUSS HEAD TAPPING SCREW T2	-	FT20412S0	2			
11	UNIT BOX	-	2H9970M01	1			
12	GROMMET	-	4H2568-01	1			
13	PROTECTOR - SEPARATOR	-	3Y4267P01	1			
14	PUSH MOUNT TIE	T30RSF	436156-01	2			
15	GUIDE - CONNECTOR	-	312762-01	1			
16	TRUSS HEAD MACHINE SCREW	(240DWNE,-C,-21,-23,-32)	FST0408S0	2			
		(240XWNE,-21,-23,-32)		3			
17	SPRING WASHER	(240DWNE,-C,-21,-23,-32)	FWSP04S0	4			
		(240XWNE,-21,-23,-32)		2			
18	SIDE PANEL - L	-	3Y5012G01	1			
19	SIDE PANEL - R	-	3Y5079G01	1			
20	REAR PANEL	-	3Y5016G01	1			
21	REAR PANEL R	-	3Y5018M01	1			
22	HOOK - TOP PANEL	-	3Y5019M01	1			
23	INSULATION - TOP PANEL	(240DWNE,-C,-21,-23,-32)	3H9603-01	1			
24	TOPPANEL	(240DWNE,-C,-21,-23,-32)	1H4725M01	1			
25	TRUSS HEAD TAPPING SCREW (S-TITE)	-	FTS0408M0	3			
26	CONNECTOR	-	P00246-01	1			
27	POWER CORD	CONT Plug	P00243-01	1			
		UK Plug	P00244-01	1			
		(CHINA)	P02215-01	1			
28	LABEL - COMMERCIAL	(CHINA)	475135L01	1			
29	WIRING LABEL	-	3Y5103L01	1			
30	LABEL - GROUND	-	451712-01	1			
31	CLAMP	(240XWNE,-21,-23,-32)	418814-06	1			
32	PLATE-ICE SHOOT	(240XWNE,-21,-23,-32)	426048-01	2			
33	BRACKET	(240XWNE,-21,-23,-32)	426049-01	1			
34	COVER-UNIT		3Y6093M01	1			

IM-240DWNE (-21,-23,-32)
IM-240XWNE (-21,-23,-32)

B. REFRIGERATION ASSY (K-1) and later



B. REFRIGERATION ASSY (K-1) and later



HE,GENERAL(50Hz)(60Hz),HSP,AUSTRALIA,KOREA,CHINA

MODEL : IM-240DWNE(-C,-21,-23,-32) IM-240XWNE(-21,-23,-32)		TITLE : B. REFRIGERATION ASSY					
INDEX NO.	DESCRIPTION	MATERIAL OR MODEL NUMBER	PART NUMBER	REQ'D NUMBER			
				K-1 A-0			
1	BASE	-	3Y5081G01	1			
2	FLAT WASHER	-	FWPL06N0	4			
3	HEX HEAD BOLT	-	FBH0620S0	4			
4	COMPRESSOR		4A1581-01	1			
		(KOREA GENERAL 60Hz)	4A1322-01	1			
5	GROMMET	-	434922-02	4			
6	SPACER	-	434921-01	4			
7	FLAT WASHER	-	FWPL08F0	-			
8	BOLT	-	436206-04	4			
9	MOTOR PROTECTOR	(EXCEPT 240DWNE,240XWNE KOREA)	4A1581F01	1			
10	REGULATOR - BRACKET	-	4Y2441-01	1			
11	FLANGE BOLT (S-TITE)		FTR0408M0	4			
		(240DWNE-C)	FTR0408M0	5			
12	BRACKET - CONDENSER W	-	3Y4320M01	1			
13	TRUSS HEAD TAPPING SCREW T2	-	FT20408S0	2			
14	BRACKET - CONDENSER W	-	3Y5082M01	1			
15	CONDENSER - WATER COOLED	-	103099G01	1			
16	CLAMP(B) - CONDENSER	-	4H0622-01	4			
17	TRUSS HEAD TAPPING SCREW T2	-	FT20408F0	4			
18	WATER REGULATOR	-	456441-01	1			
19	TRUSS HEAD MACHINE SCREW	-	FST0406S0	2			
20	EVAPORATOR	(240DWNE,XWNE)	2H7526G02	1			
		(240DWNE-C)	2H9949G01	1			
		(240DWNE-21,XWNE-21)	208205G04	1			
		(240DWNE-23,XWNE-23)	2H1833G03	1			
		(240DWNE-32,XWNE-32)	2H3631G02	1			
21	COLLAR		3H3879-01	4			
	SPACER	(240DWNE-C)	4H0471-01	4			
22	WASHER	-	4H0777-01	4			
23	SCREW EVAPORATOR	(240DWNE,DWNE-32, 240XWNE,XWNE-32)	4Y4922M02	4			
		(240DWNE-C)	4Y4922M01	4			
		(240DWNE-21,DWNE-23, 240XWNE-21,XWNE-23)	4Y4922M03				
24	FLANGE NUT	-	FNHF06S0	4			

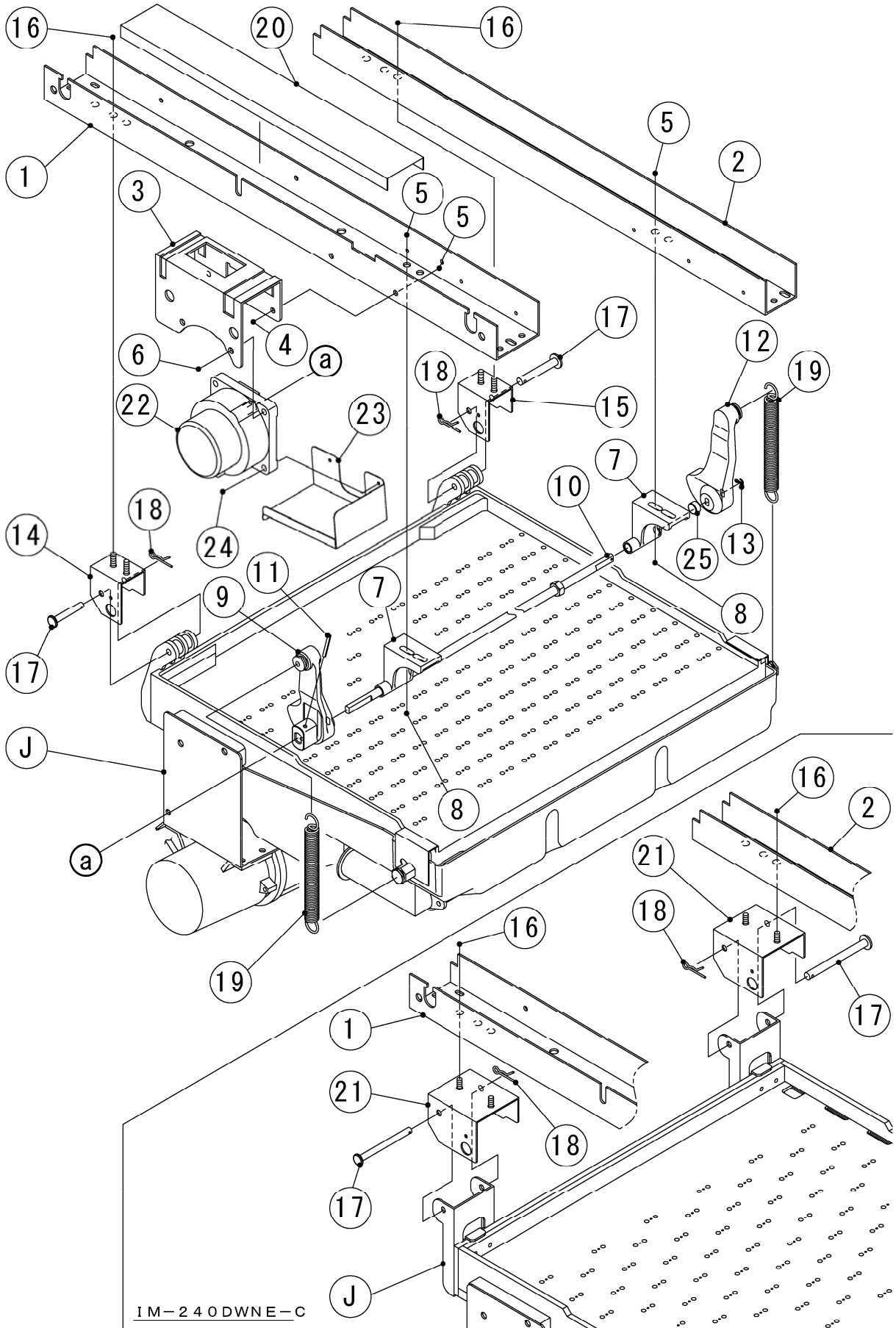
HE,GENERAL(50Hz)(60Hz),HSP,AUSTRALIA,KOREA,CHINA

MODEL : IM-240DWNE(-C,-21,-23,-32) IM-240XWNE(-21,-23,-32)		TITLE : B. REFRIGERATION ASSY					
INDEX NO.	DESCRIPTION	MATERIAL OR MODEL NUMBER	PART NUMBER	REQ'D NUMBER			
				K-1 A-0			
25	PIPE(B) - LOW SIDE	-	4Y6625G01	1			
26	TEE	-	430608-01	1			
27	EXPANSION VALVE	FRE-10NHD-3	P01874-01	1			
28	VALVE COVER	-	3Y3051P01	1			
29	CLAMP	18T6	P00752-01	2			
30	CLIP	-	452254-02	2			
31	INSULATION	-	4X8643-01	1			
32	TIE		7920-0003	13			
		(240DWNE-C)	7920-0003	16			
33	PIPE(C) - HOT GAS		3Y5069G01	1			
		(240DWNE-C)	3Y5073G01	1			
34	PIPE(C) - HIGH SIDE		3Y5229G01	1			
		(240DWNE-C)	3Y5074G01	1			
35	HEAT EXCHANGER		2X0039G01	1			
		(240DWNE-C)	3Y3207G01	1			
36	TEE	-	420041-05	1			
37	TUBE - CAPILLARY	-	4X4276-01	1			
38	PIPE(A-2) - HIGH SIDE	-	4Y6680M01	1			
39	PRESSURE SWITCH	R134a,R22,R404A SEP-P270HHD-2	459863-03	1			
40	TEE		420041-09	1			
		(240DWNE-C)	417394-02	1			
41	PIPE(A-1) - HIGH SIDE	-	3Y5120M01	1			
42	PIPE(B) - HIGH SIDE	-	4Y6778M01	1			
43	TEE	-	4Y4060Z01	2			
44	DRIER	DY-15QHD-13	458776-01	1			
45	HOT GAS VALVE	ATS-7S23HD-1	P01871-01	1			
46	STRAINER		P00812-01	1			
		(240DWNE-C)	430365-05	1			
47	PIPE(A) - HOT GAS		4Y6697M01	1			
		(240DWNE-C)	4Y6626M02	1			
48	PIPE(B) - HOT GAS		3Y5135G01	1			
		(240DWNE-C)	3Y5150G01	1			
49	FITTING(P)	-	3Y0747-01	2			
50	NUT (A) - FITTING	-	415713-03	2			
51	TAPPERED PACKING	-	415715-01	2			

IM-240DWNE (-C, -21, -23, -32)
IM-240XWNE (-21, -23, -32)

C. MECHANISM ASSY

(K-1) and later



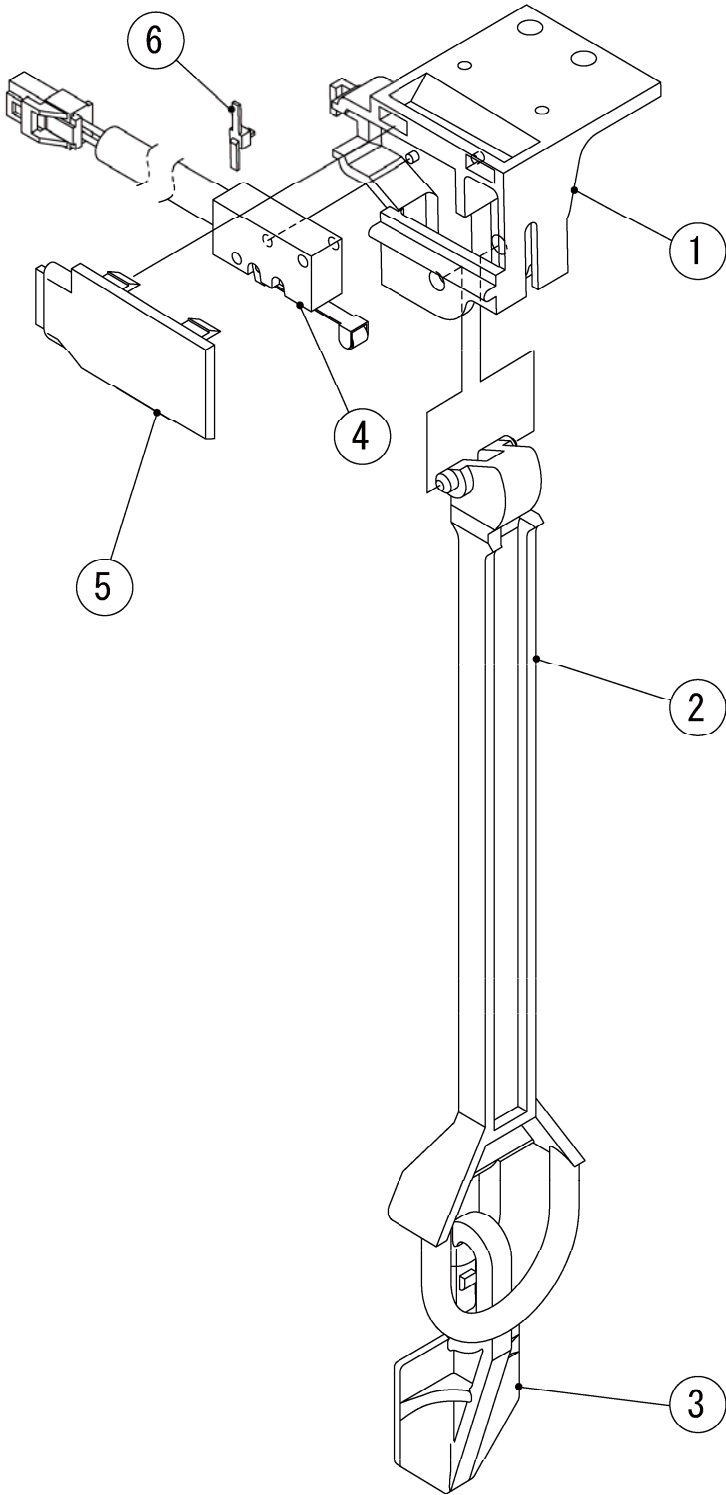
IM-240DWNE-C

HE,GENERAL(50Hz)(60Hz),HSP,AUSTRALIA,KOREA,CHINA

MODEL : IM-240DWNE(-C,-21,-23,-32) IM-240XWNE(-21,-23,-32)		TITLE : C. MECHANISM ASSY					
INDEX NO.	DESCRIPTION	MATERIAL OR MODEL NUMBER	PART NUMBER	REQ'D NUMBER			
				K-1 A-0			
J	WATER PAN ASSY	(240DWNE,DWNE-23,240XWNE,XWNE-23)	1H4689A01	1			
		(240DWNE-C)	1H4680A01	1			
		(240DWNE-21,XWNE-21)	1H4689002	1			
		(240DWNE-32,XWNE-32)	1H4689001	1			
1	FRONT FRAME	-	3Y5020M01	1			
2	REAR FRAME	-	3Y5021M01	1			
3	BRACKET - AM	-	3Y2924M01	1			
4	TRUSS HEAD MACHINE SCREW	-	FST0512S0	2			
5	FLANGE NUT	-	FNHF05S0	6			
6	HEX HEAD BOLT (SPRING WASHER AND FLAT WASHER)	-	FBK0620S0	2			
7	BEARING - CAM SHAFT	-	3X8307-01	2			
8	TRUSS HEAD MACHINE SCREW	-	FST0516S0	4			
9	CAM(A)	-	306543G03	1			
10	CAM SHAFT	-	425511G01	1			
11	SPRING PIN 3*28	-	712S-0328	1			
12	CAM (B)	-	315775-01	1			
13	COTTER PIN	-	711S-0212	1			
14	BEARING PLATE	(EXCEPT 240DWNE-C)	3H1440G03	1			
15	BEARING PLATE	(EXCEPT 240DWNE-C)	3H1440G04	1			
16	FLANGE NUT	-	FNHF06S0	4			
17	SHAFT (B)	(EXCEPT 240DWNE-C)	4H1184-02	2			
	SHAFT (A)	(240DWNE-C)	4H1184-01	2			
18	SNAP PIN	-	715S-0006	2			
19	EXTEN SPRING	-	4H3473-01	2			
20	GUIDE - CONNECTOR	-	4H5619-01	1			
21	BEARING - WATER PAN	(240DWNE-C)	3Y5036G01	2			
22	ACTUATOR MOTOR	SR555A43-22	P01869-01	1			
23	COVER-AM		3Y5292M01	1			
24	HEX HEAD BOLT (SPRING WASHER AND FLAT WASHER)		FBK0416S0	2			
25	COLLAR	(240DWNE-21,-32,240XWNE-21,-32)	429124-01	1			

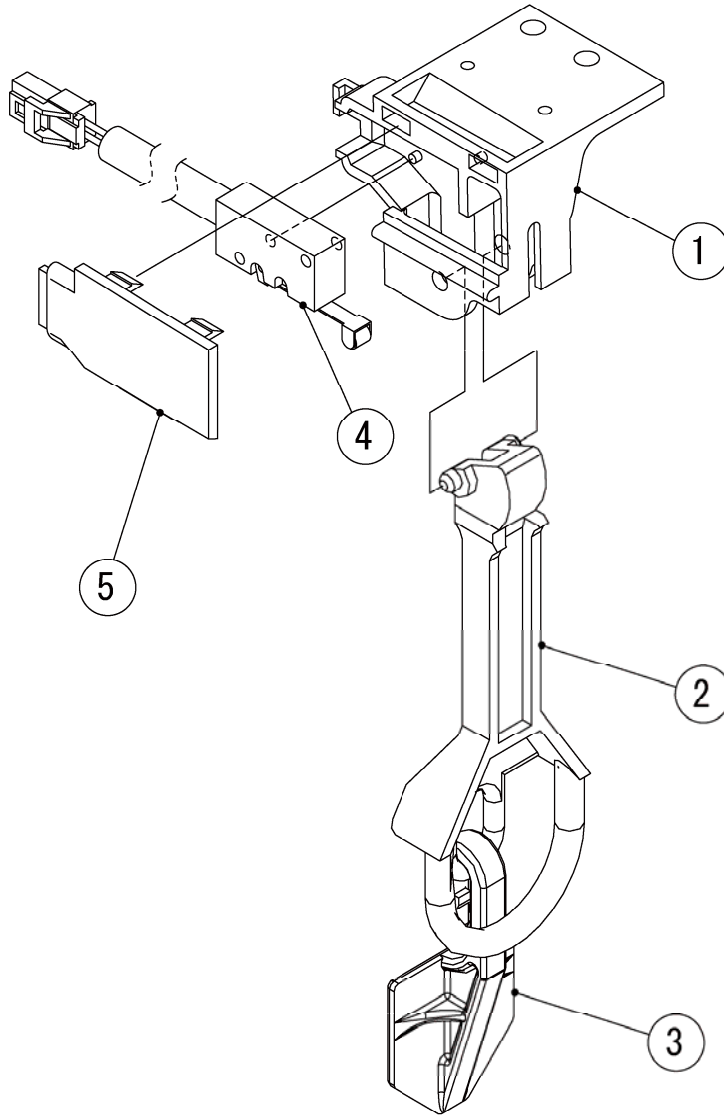
D. BIN SWITCH ASSY

(K-1) and later



D. BIN SWITCH ASSY

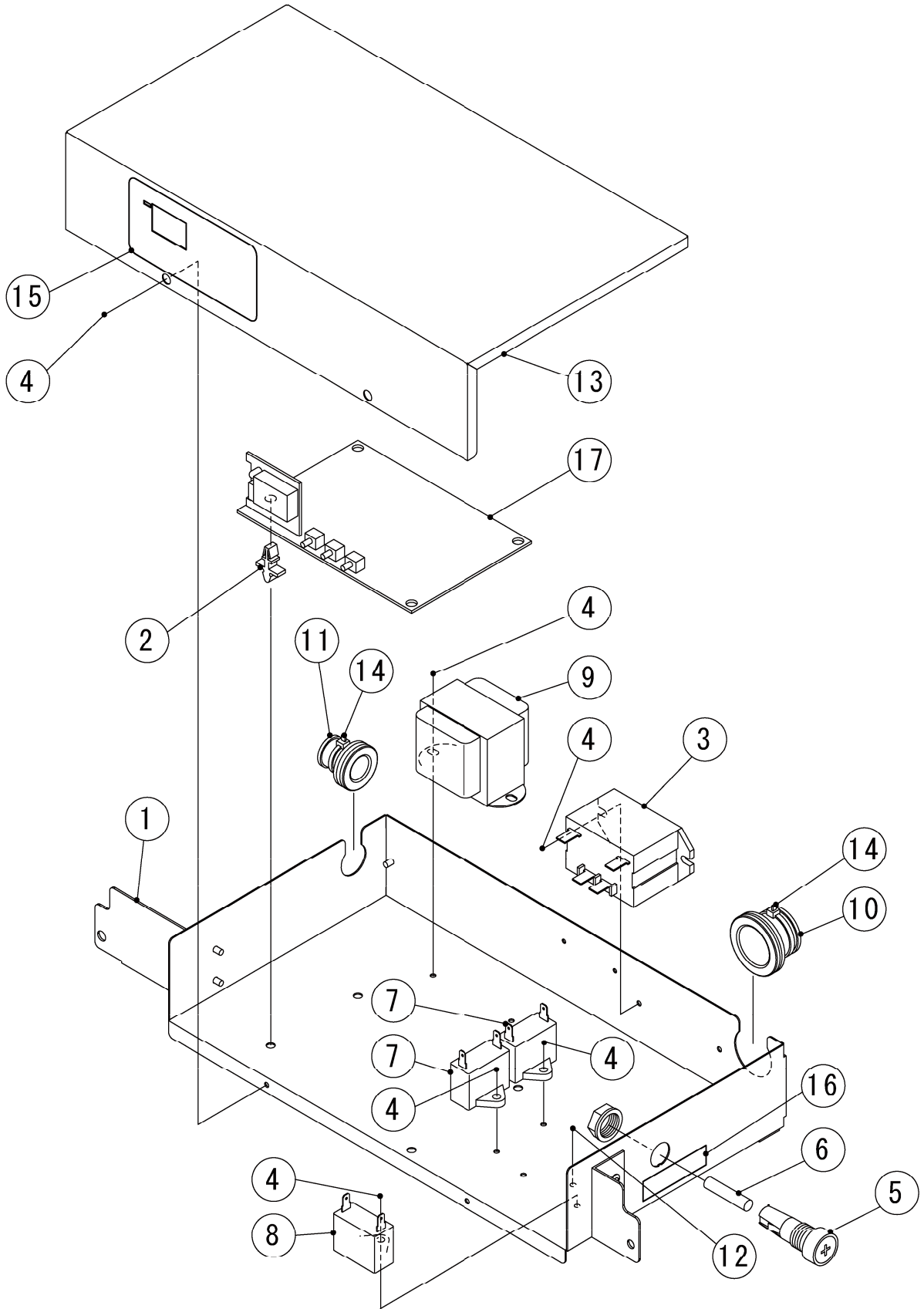
(K-1) and later



IM-240DWNE (-C, -21, -23, -32)
IM-240XWNE (-21, -23, -32)

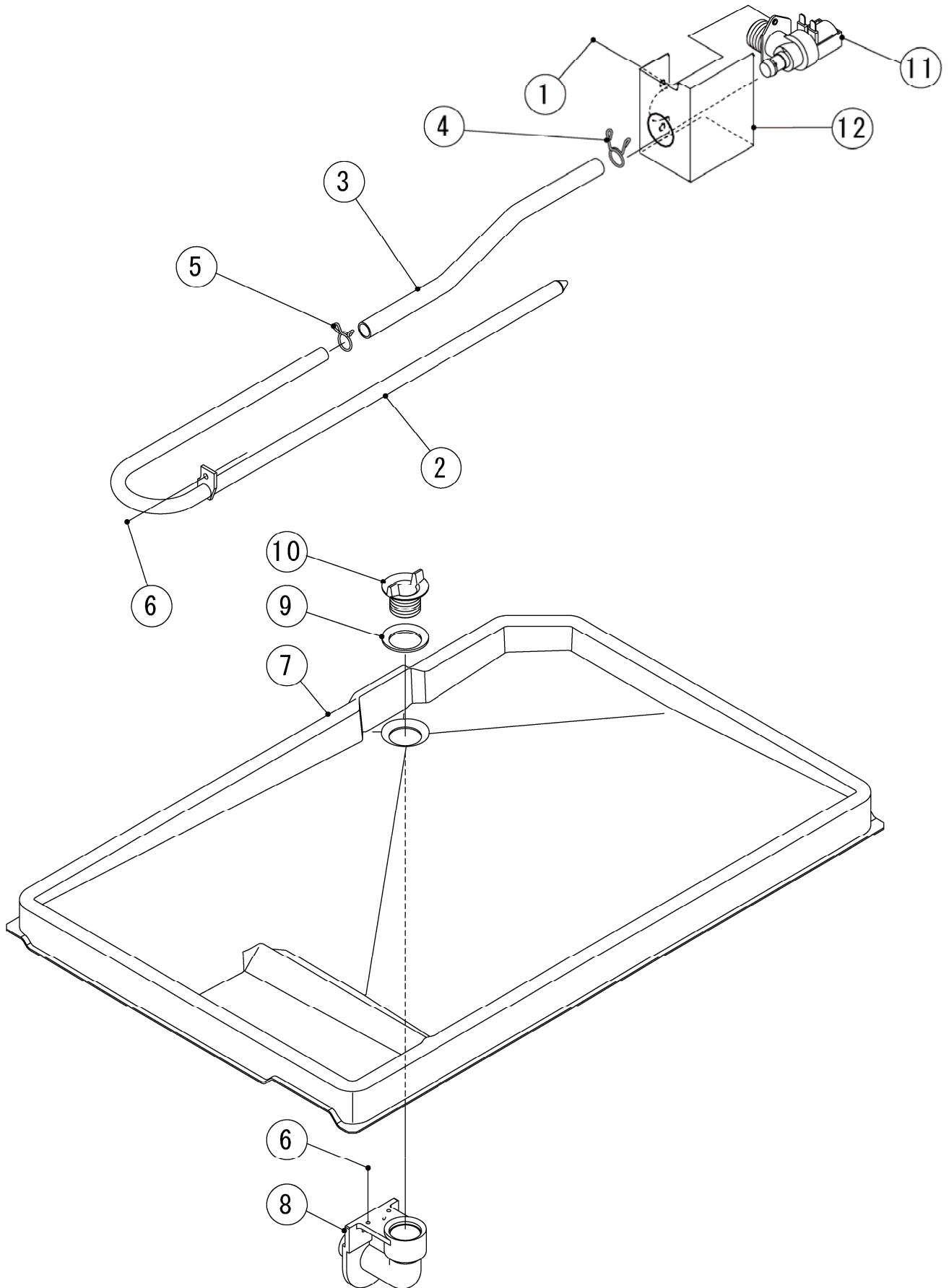
E. CONTROL BOX ASSY

(K-1) and later



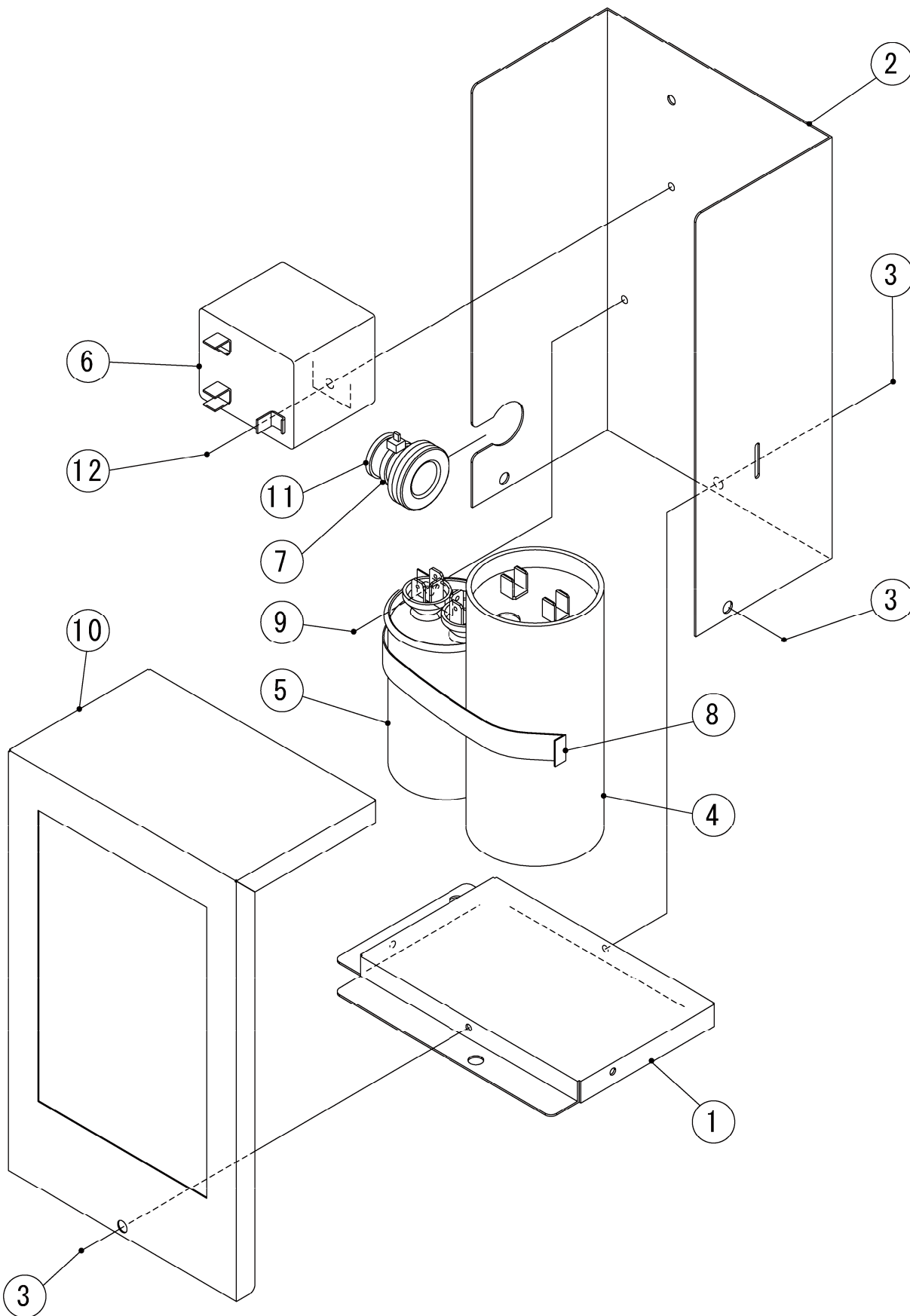
IM-240DWNE (-C,-21,-23,-32)
IM-240XWNE (-21,-23,-32)

F. WATER CIRCUIT ASSY (K-1) and later



IM-240DWNE (-C, -21, -23, -32)
IM-240XWNE (-21, -23, -32)

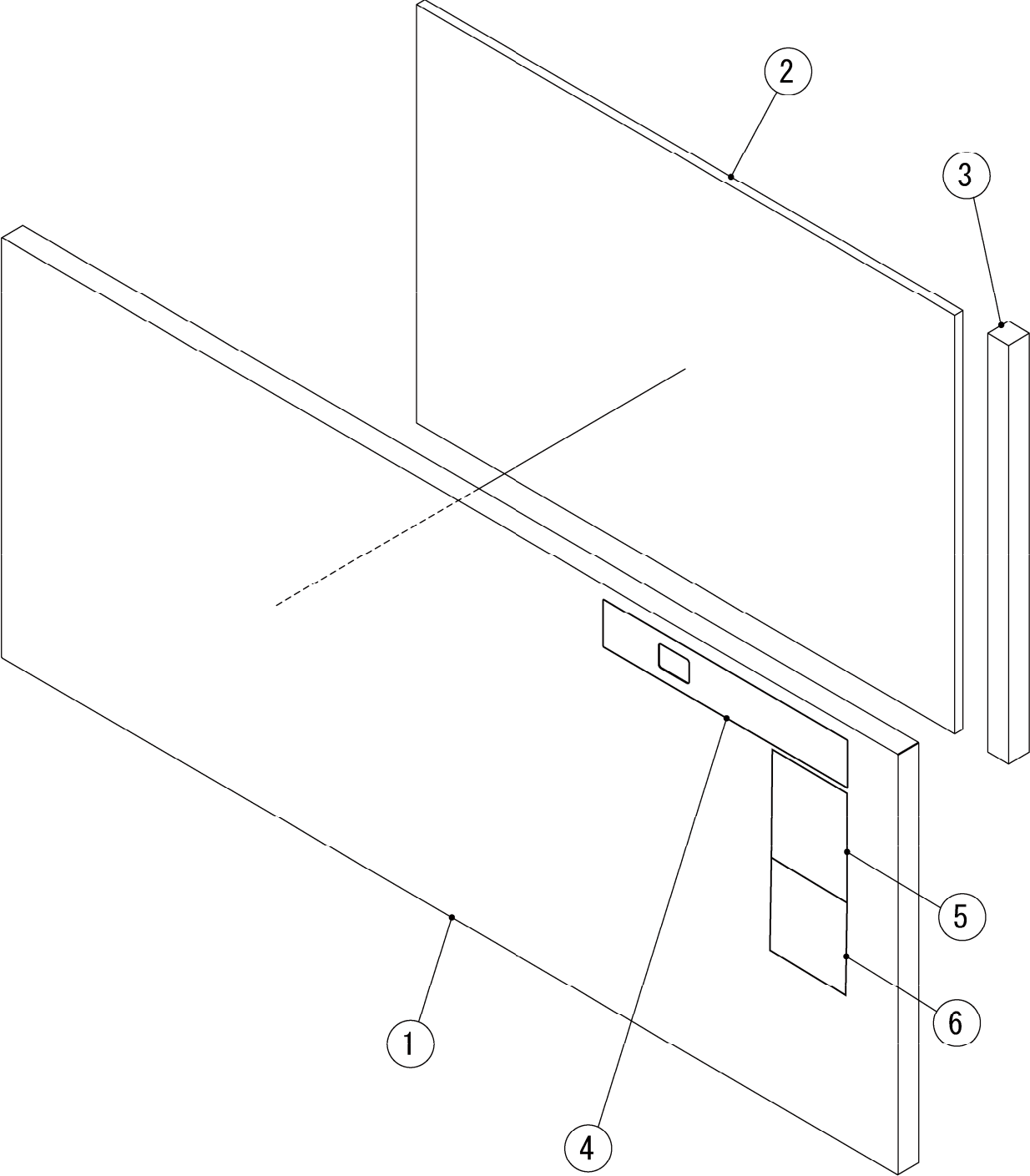
G. CONTROL BOX B-ASSY (K-1) and later



IM-240DWNE (-C, -21, -23, -32)
IM-240XWNE (-21, -23, -32)

H. FRONT COVER

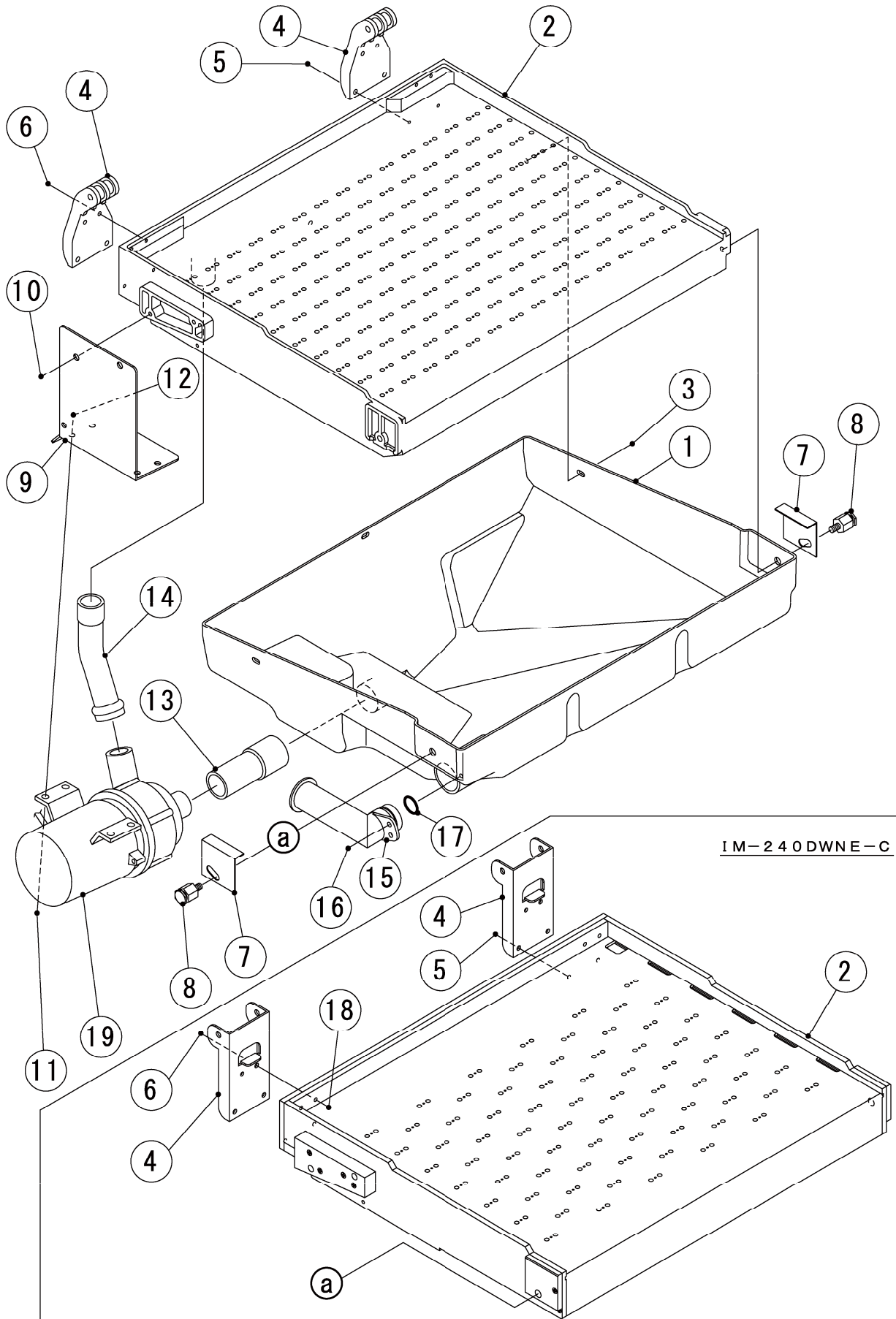
(K-1) and later



IM-240DWNE (-C, -21, -23, -32)
IM-240XWNE (-21, -23, -32)

J. WATER PAN ASSY

(K-1) and later



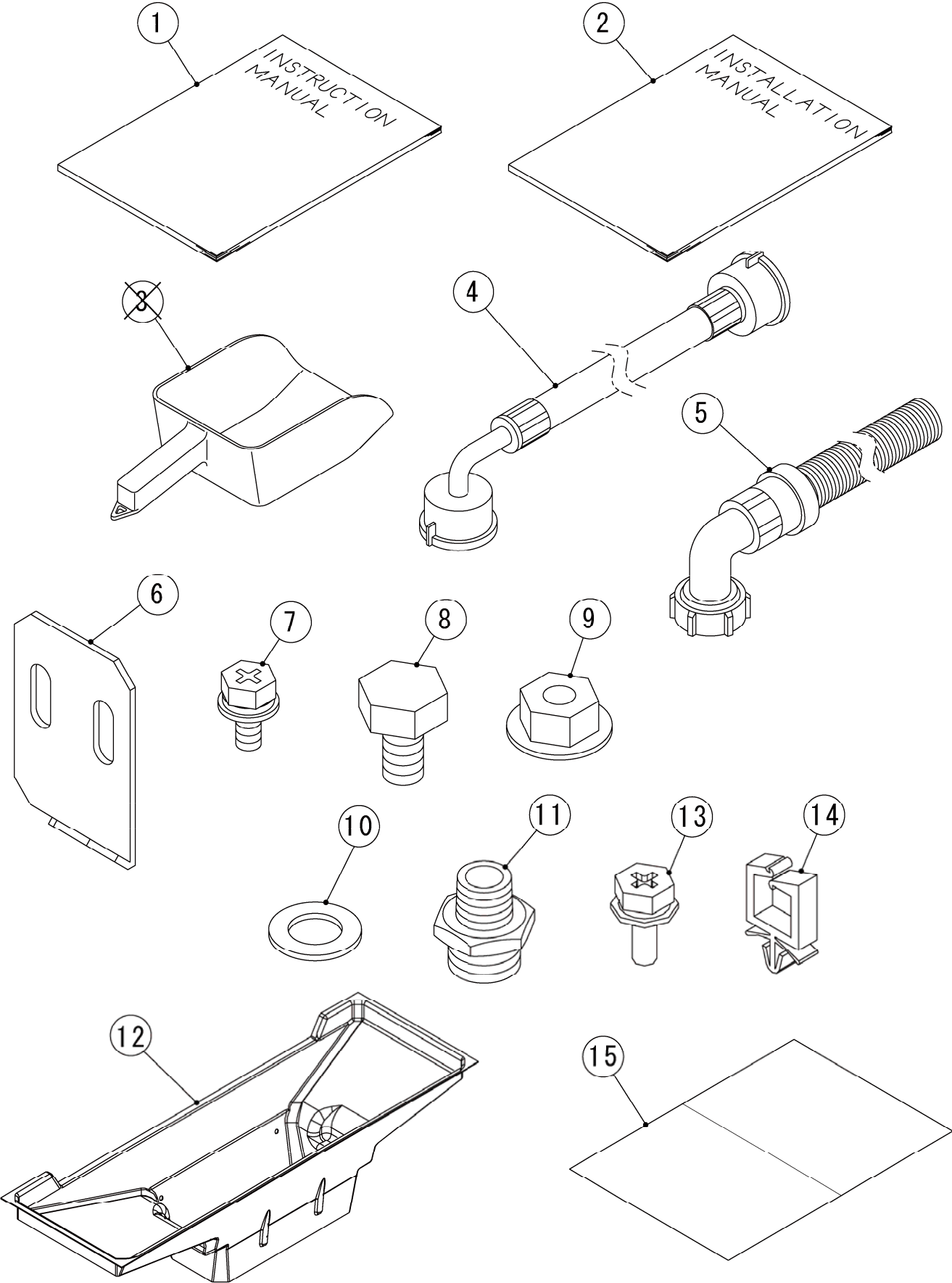
HE,GENERAL(50Hz)(60Hz),HSP,AUSTRALIA,KOREA,CHINA

MODEL : IM-240DWNE(-C,-21,-23,-32) IM-240XWNE(-21,-23,-32)		TITLE : J. WATER PAN ASSY					
INDEX NO.	DESCRIPTION	MATERIAL OR MODEL NUMBER	PART NUMBER	REQ'D NUMBER			
				K-1 A-0			
1	WATER PAN	-	1H0888-02	1			
2	WATER PLATE	(240DWNE,DWNE-23,240XWNE,XWNE-23)	208020G01	1			
		(240DWNE-21,XWNE-21)	208484G01	1			
		(240DWNE-32,XWNE-32)	1H0351G01	1			
		(240DWNE-C)	1H4700G01	1			
3	TRUSS HEAD TAPPING SCREW T2	(240DWNE,DWNE-23,240XWNE,XWNE-23,240DWNE-C)	FT20406M0	3			
4	WATER PAN HANGER		3H2059-01	2			
	BRACKET - WATER PAN	(240DWNE-C)	4Y6595M01	2			
5	TRUSS HEAD TAPPING SCREW T2	(240DWNE,DWNE-23,240XWNE,XWNE-23)	FT20416M0	4			
	TRUSS HEAD MACHINE SCREW	(240DWNE-21,DWNE-32,240XWNE-21,XWNE-32,240DWNE-C)	FST0420S0	4			
6	TRUSS HEAD TAPPING SCREW T2	(240DWNE,DWNE-23,240XWNE,XWNE-23)	FT20425M0	4			
	TRUSS HEAD MACHINE SCREW	(240DWNE-21,DWNE-32,240XWNE-21,XWNE-32,240DWNE-C)	FST0425S0	4			
7	BRACKET	-	402957-01	2			
8	SCREW SPRING HOOK	-	4H2582G01	2			
9	BRACKET - PUMP	-	4Y6617M01	1			
10	TRUSS HEAD TAPPING SCREW T2	(240DWNE,DWNE-23,240XWNE,XWNE-23)	FT20516M0	2			
	TRUSS HEAD MACHINE SCREW	(240DWNE-21,DWNE-32,240XWNE-21,XWNE-32,240DWNE-C)	FST0516S0	2			
11	HEX HEAD BOLT (SPRING WASHER AND FLAT WASHER)	-	FBK0412S0	4			
12	FLANGE NUT	-	FNHF04S0	4			
13	SUCTION TUBE	-	4Y6641R01	1			
14	DISCHARGE TUBE	-	4Y6642R01	1			
15	PIPE - DRAIN	-	315530-01	1			
16	TRUSS HEAD MACHINE SCREW	-	FST0410S0	1			
17	O-RING	-	7611-G025	1			
18	NUT	(240DWNE-21,DWNE-32,240XWNE-21,XWNE-32,240DWNE-C)	FNH104S0	4			
19	PUMP MOTOR	PMX-352BHZ1	P01868-01	1			
20	TRUSS HEAD MACHINE SCREW	(240DWNE-21,DWNE-32,240XWNE-21,XWNE-32)	FST0408S0	3			

IM-240DWNE (-C, -21, -23, -32)
IM-240XWNE (-21, -23, -32)

K. ACCESSORIES

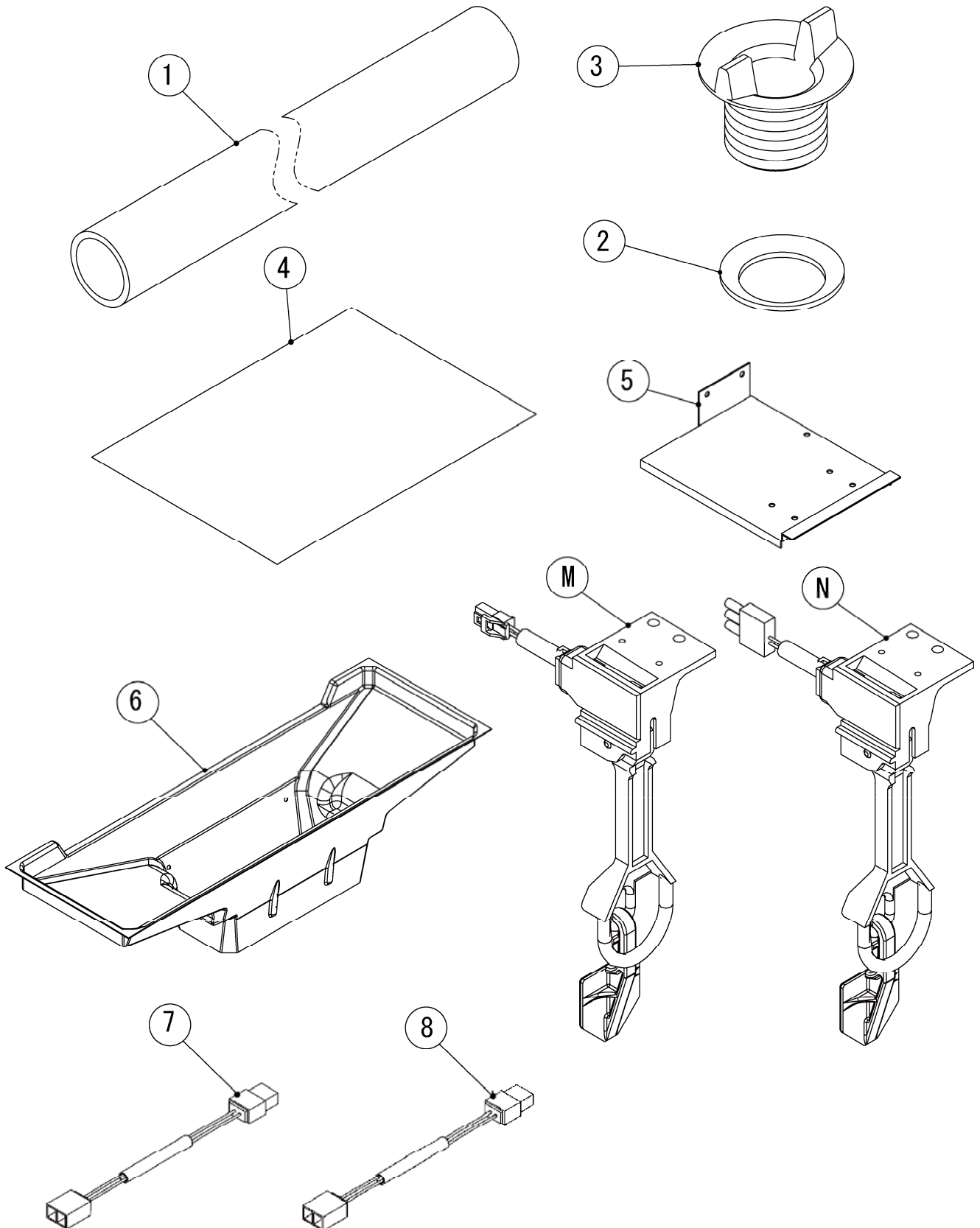
(K-1) and later



IM-240DWNE (-C, -21, -23, -32)
IM-240XWNE (-21, -23, -32)

L. OPTIONAL PARTS

(K-1) and later

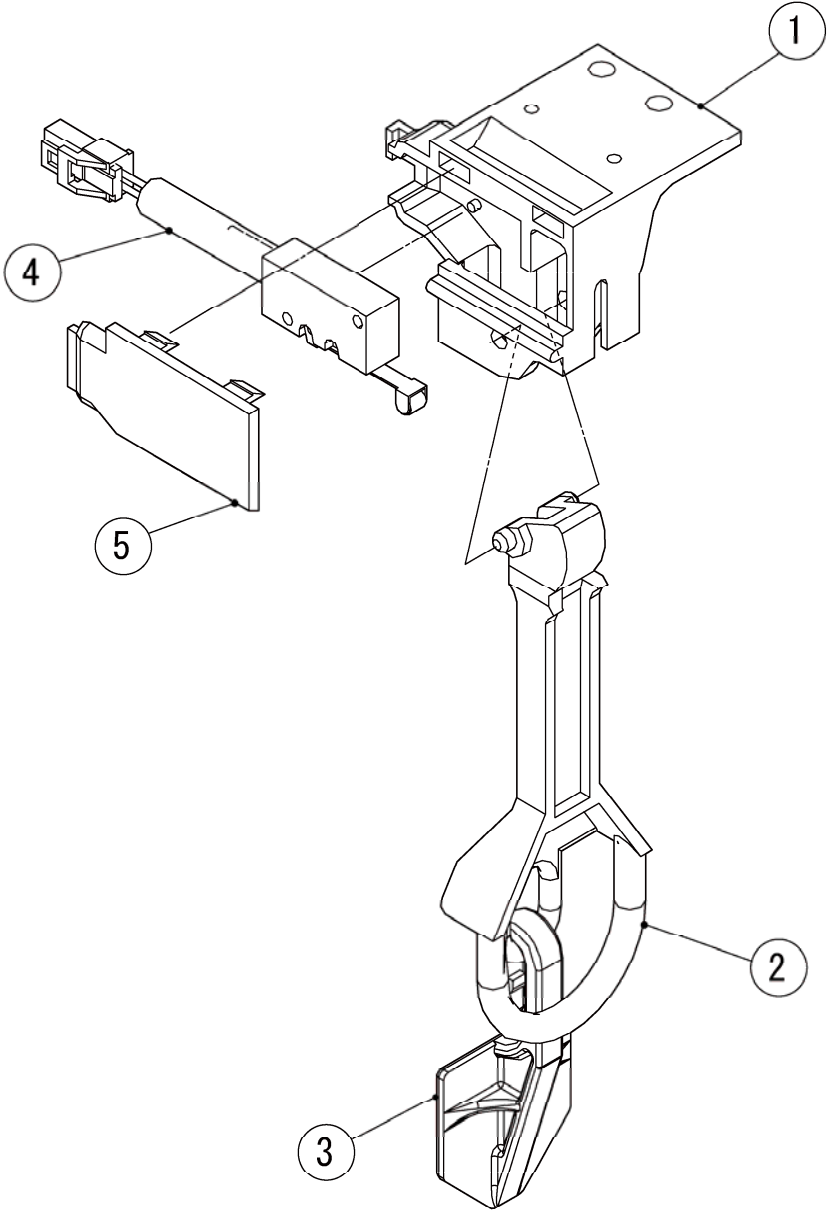


IM-240DWNE (-C, -21, -23, -32)

IM-240XWNE (-21, -23, -32)

M. BIN SWITCH ASSY

(K-1) and later



IM-240DWNE (-C, -21, -23, -32)
IM-240XWNE (-21, -23, -32)

N. BIN SWITCH ASSY

(K-1) and later

