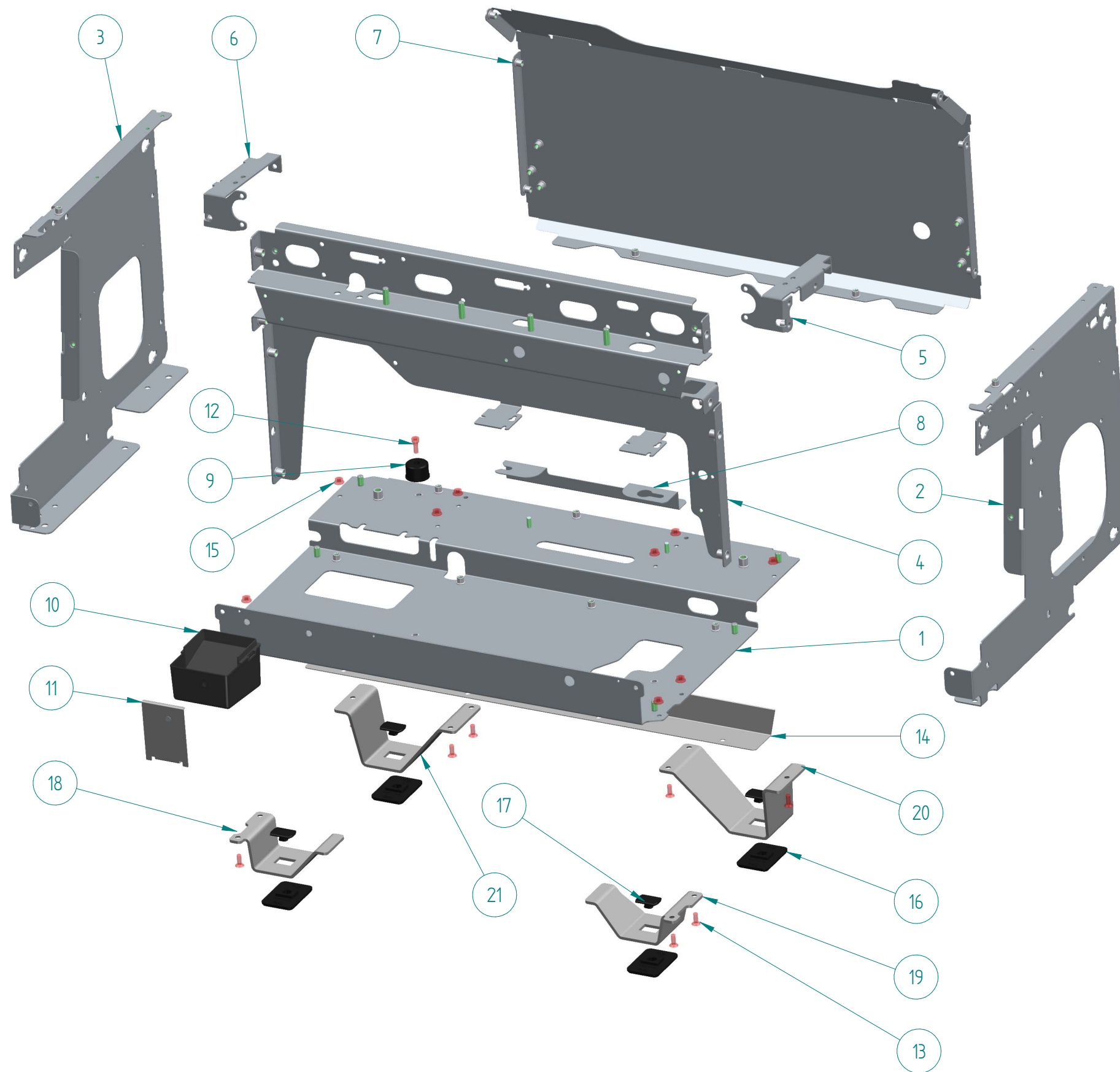


DALLA  
CORTE

# SPARE PARTS CATALOGUE

ICON





ITEM	CODE	DESCRIPTION	NOTE
1	B-MC-5002	BASE 2 GROUPS	NOT ORDINABLE
1 α	B-MC-5003*	BASE 3 GROUPS	NOT ORDINABLE
2	B-MC-5004	INNER SIDE RIGHT	NOT ORDINABLE
3	B-MC-5005	INNER SIDE LEFT	NOT ORDINABLE
4	B-MC-5014	CENTRAL CROSSPIECE 2 GROUPS	NOT ORDINABLE
4 α	B-MC-5015*	CENTRAL CROSSPIECE 3 GROUPS	NOT ORDINABLE
5	B-MC-5000	RIGHT TAP SUPPORT	NOT ORDINABLE
6	B-MC-5001	LEFT TAP SUPPORT	NOT ORDINABLE
7	B-MC-5016	REAR CROSSPIECE 2GR	NOT ORDINABLE
7 α	B-MC-5017*	REAR CROSSPIECE 3GR	NOT ORDINABLE
8	B-MC-1123	BOILER SUPPORT	
9	B-MC-0187	RUBBER ANTIVIBRATION H20 SH50	
10	B-MC-0017	DRAIN BOX	
11	B-MC-0670	DRAIN BOX BRACKET	
12	B-00-0109	SCREW TCEI A2 M6x16 DIN912	
13	B-00-0434	SCREW TSEI M6x16 A2 DIN7991	
14	B-MC-5385	CARTER LOWER REAR 2GR	
14 α	B-MC-5384*	CARTER LOWER REAR 3GR	
15	B-00-0113	FLANGED NUT M6 DIN6923	
16	B-MC-5400	RUBBER JOINTED	
17	B-MC-5404	RUBBER JOINT CAP	
18	B-MC-5308	FRONT LEFT STAINLESS STEEL	
19	B-MC-5302	FRONT RIGHT STAINLESS STEEL	
20	B-MC-5311	REAR RIGHT STAINLESS STEEL	
21	B-MC-5314	REAR LEFT STAINLESS STEEL FOOT	

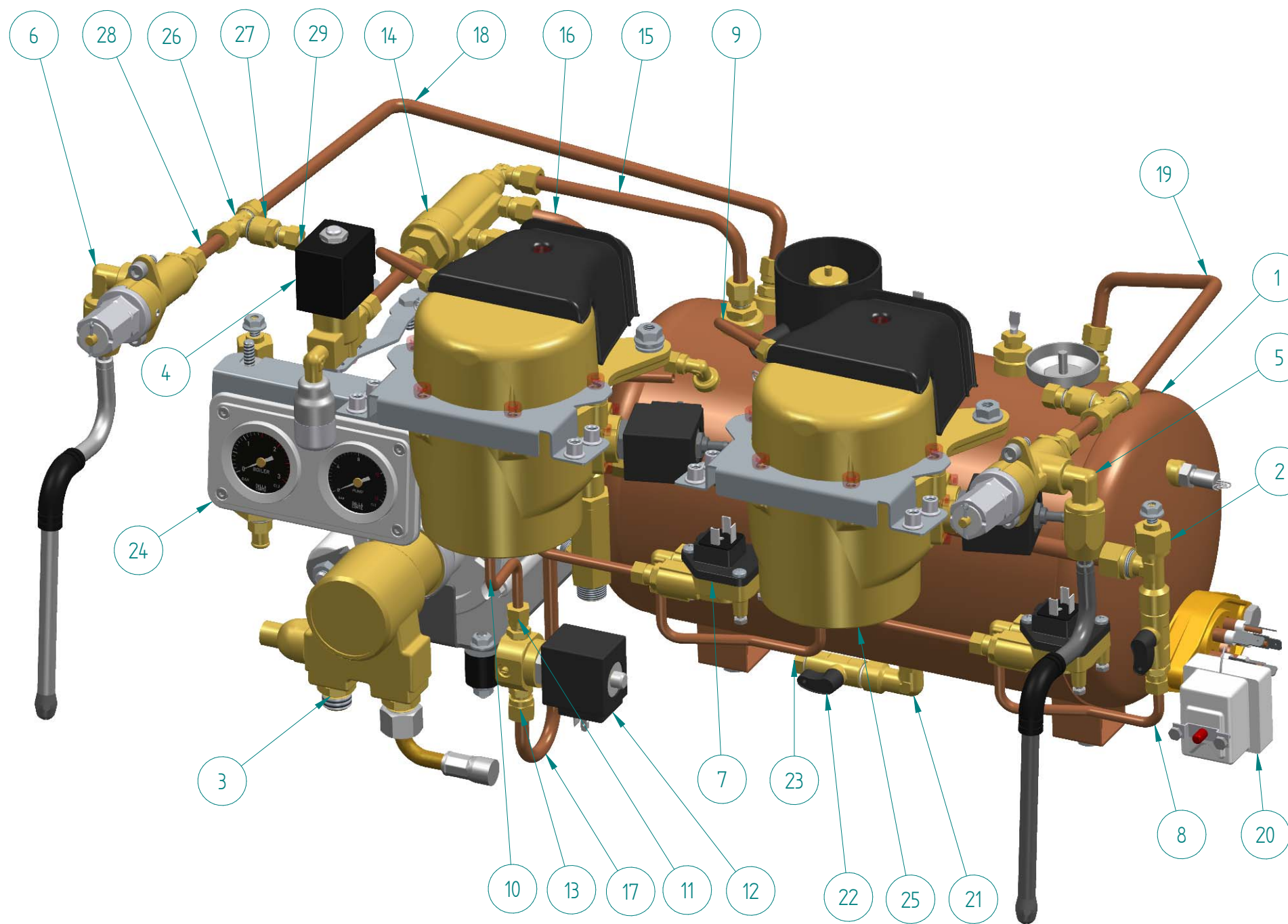
**DALLA CORTE**  
SPARE PARTS CATALOGUE  
ICON

DESCRIPTION	COMPLETE FRAME
ASSEMBLY CODE	

REV	02
EMISSION DATE	NOVEMBER 2022

NOTE:	* ALTERNATIVE TO THE REPRESENTED COMPONENT
	** COMPONENT NOT SHOWN

SHEET	3
-------	---



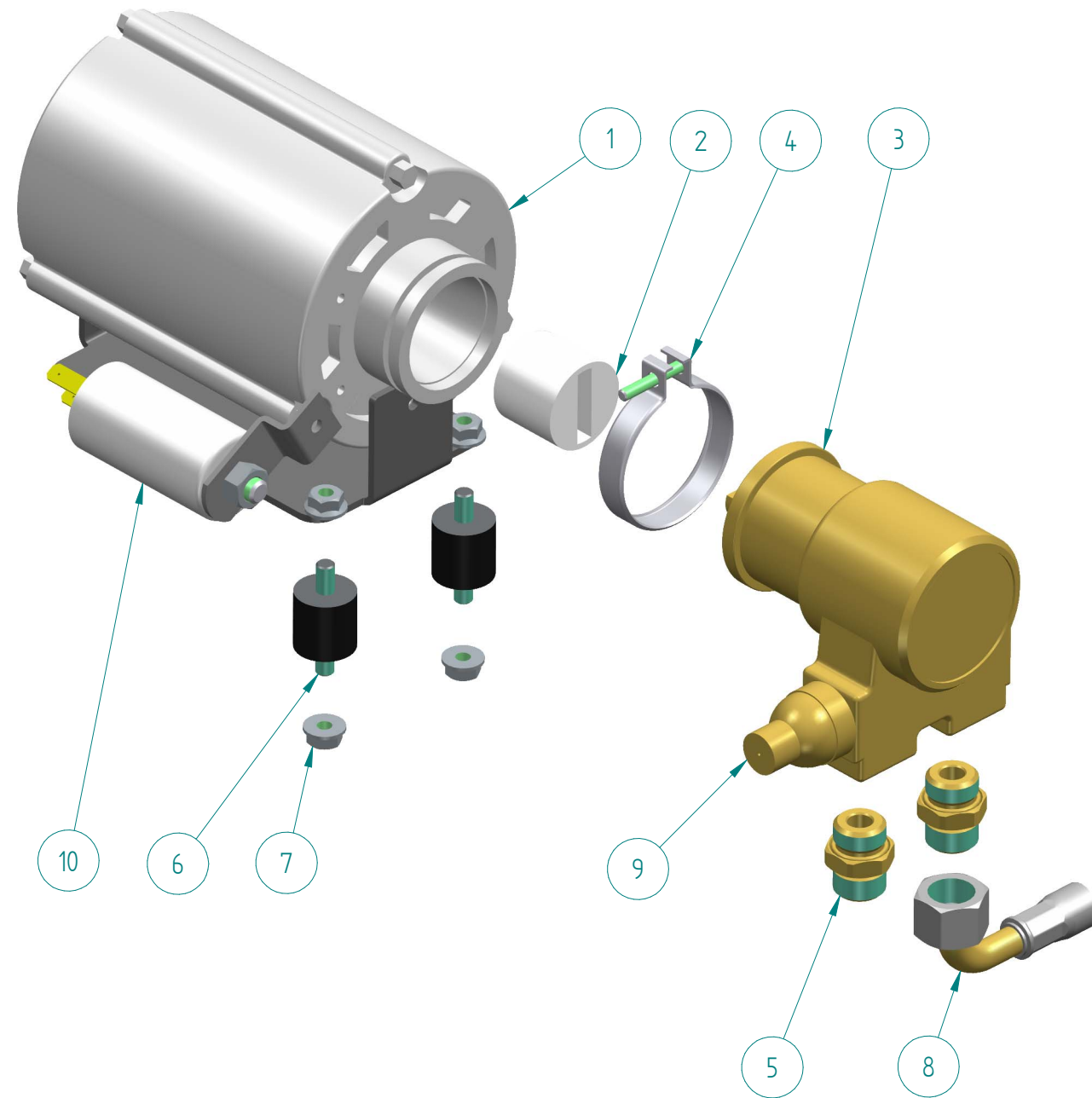
ITEM	CODE	DESCRIPTION	NOTE
1	A-MC-1006	COMPLETE BOILER 7 L	SEE DETAIL SHEET 9
1 α	A-MC-1007*	COMPLETE BOILER 13 L	SEE DETAIL SHEET 9
2	A-MC-1022	MANIFOLD ASSEMBLY 2GR	SEE DETAIL SHEET 8
2 α	A-MC-1023*	MANIFOLD ASSEMBLY 3GR	SEE DETAIL SHEET 8
3	A-MC-0514TF	MOTOPUMP 120W + FLEX PIPE	SEE DETAIL SHEET 5
3 α	A-MC-0024TF*	MOTOPUMP 165W + FLEX PIPE	SEE DETAIL SHEET 5
4	A-MC-5100	HOT WATER GROUP ASSEMBLY	SEE DETAIL SHEET 6
5	A-MC-0512A	ASSEMBLY RH STEAM TAP	SEE DETAIL SHEET 12
6	A-MC-0513A	ASSEMBLY LH STEAM TAP	SEE DETAIL SHEET 12
7	A-MC-1021	FLOW METER	SEE DETAIL SHEET 7
8	B-MC-1095	MANIFOLD-FLOW METER PIPE	ALSO ORDER n.2 PZ B-00-0012A
9	B-MC-1109	GROUP FEED PIPE	ALSO ORDER n.2 PZ B-00-0012A
10	B-MC-5107	MANIFOLD - EVC PIPE D6	ALSO ORDER n.2 PZ B-00-0015A
11	B-00-0012A	STRAIGHT COUPL. 1/8" D6 CW510L	
12	B-00-0026	SOLENOID VALVE 2-WAY+RF 24V D2	
13	B-00-0101A	STRAIGHT COUPL. 1/8" D8 CW510L	
14	A-MC-1032	COMPLETE EXCHANGER	SEE DETAIL SHEET 10
15	B-MC-0579	SUCTION EL-EXCH.PIPE	ALSO ORDER n.2 PZ B-00-0015A
16	B-MC-0580	BOILER-EXCH. PIPE	ALSO ORDER n.2 PZ B-00-0015A
17	B-MC-0581	FEED SOL.VALVE-EXCH. D8 PIPE	ALSO ORDER n.2 PZ B-00-0015A
18	B-MC-5104	LEFT STEAM PIPE D8	ALSO ORDER n.2 PZ B-00-0015A
19	B-MC-5103	RIGHT STEAM PIPE D8	ALSO ORDER n.2 PZ B-00-0015A
20	B-00-0023	SAFETY THERMOSTAT 3F 25A	
21	B-00-0158A	L-COUPLING MF 1/4"	
22	B-00-0022A	BALL TAP 1/4" CW510L	
23	B-00-0181A	PLUG 1/4" M	
24	A-MC-5103	PRESSURE GAUGE ASSEMBLY	SEE DETAIL SHEET 11
25	A-MC-5102	ASSEMBLED SUPPLY UNIT	SEE DETAIL SHEET 13
26	B-00-0157A	T-COUPLING D8 1/4"	
27	B-00-0138A	STRAIGHT COUPLING D6 1/4"	
28	B-MC-5102	STEAM PIPE L51 D8	
29	B-00-0316	TEFLON BEARINGS CL. 1 7/16"	
30	B-00-0360**	FLEX PIPE 3/8" L22,5	
31	B-00-0325**	TRANSPARENT SILICONE PIPE 6x10	
32	B-00-0082*	SILICONE PIPE 5x10	
33	B-00-0084**	BLACK SIL. PIPE SH 60 S.ø8 x 12	
34	A-MC-1514**	ELECTRICAL SYSTEM 2GR	SEE DETAIL SHEET 15
34 α	A-MC-1515**	ELECTRICAL SYSTEM 3GR	SEE DETAIL SHEET 15

**DALLA CORTE**  
SPARE PARTS CATALOGUE  
ICON

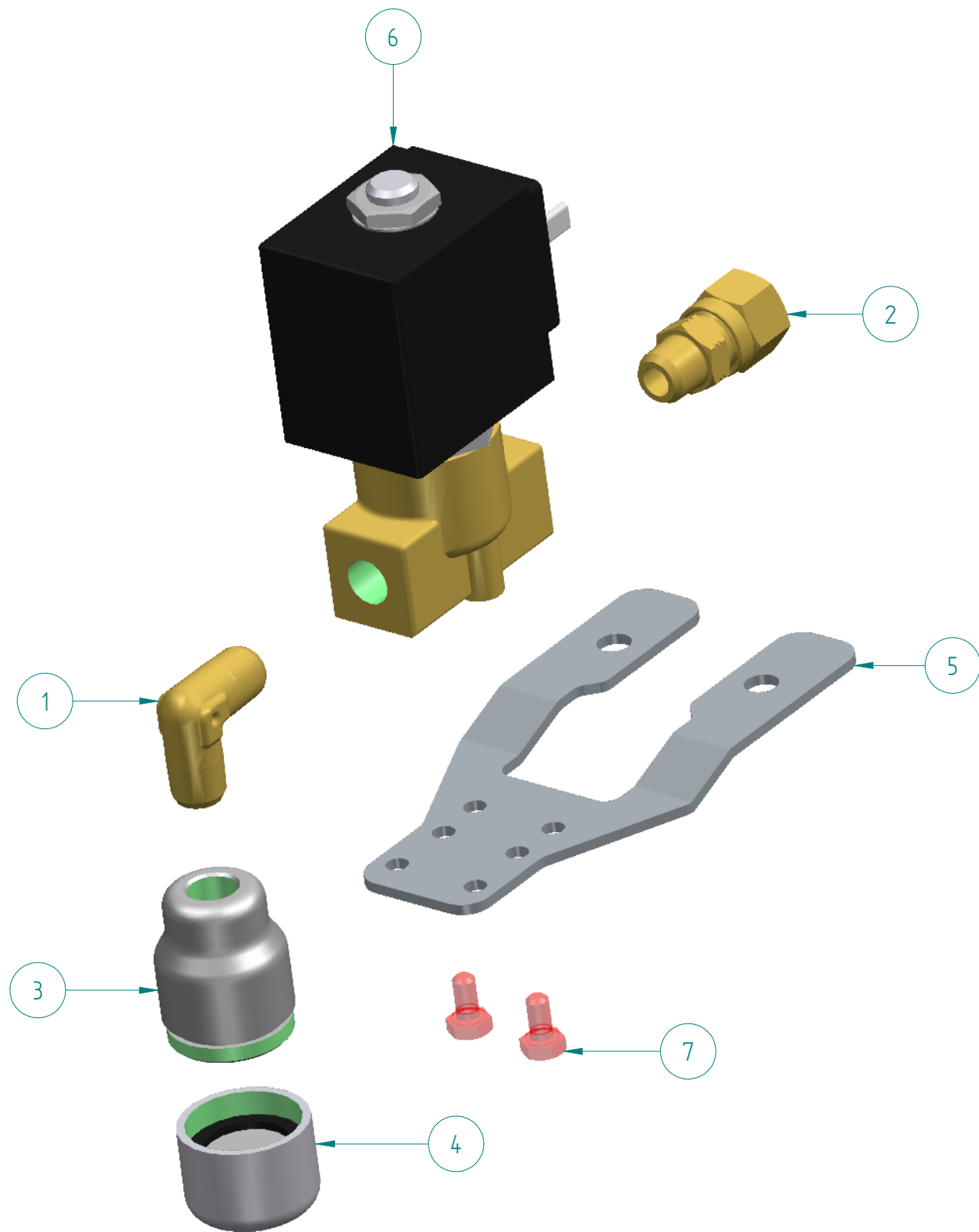
DESCRIPTION HYDRAULIC SYSTEM	REV 02
ASSEMBLY CODE	EMISSION DATE NOVEMBER 2022

NOTE:  
\* ALTERNATIVE TO THE REPRESENTED COMPONENT  
\*\* COMPONENT NOT SHOWN



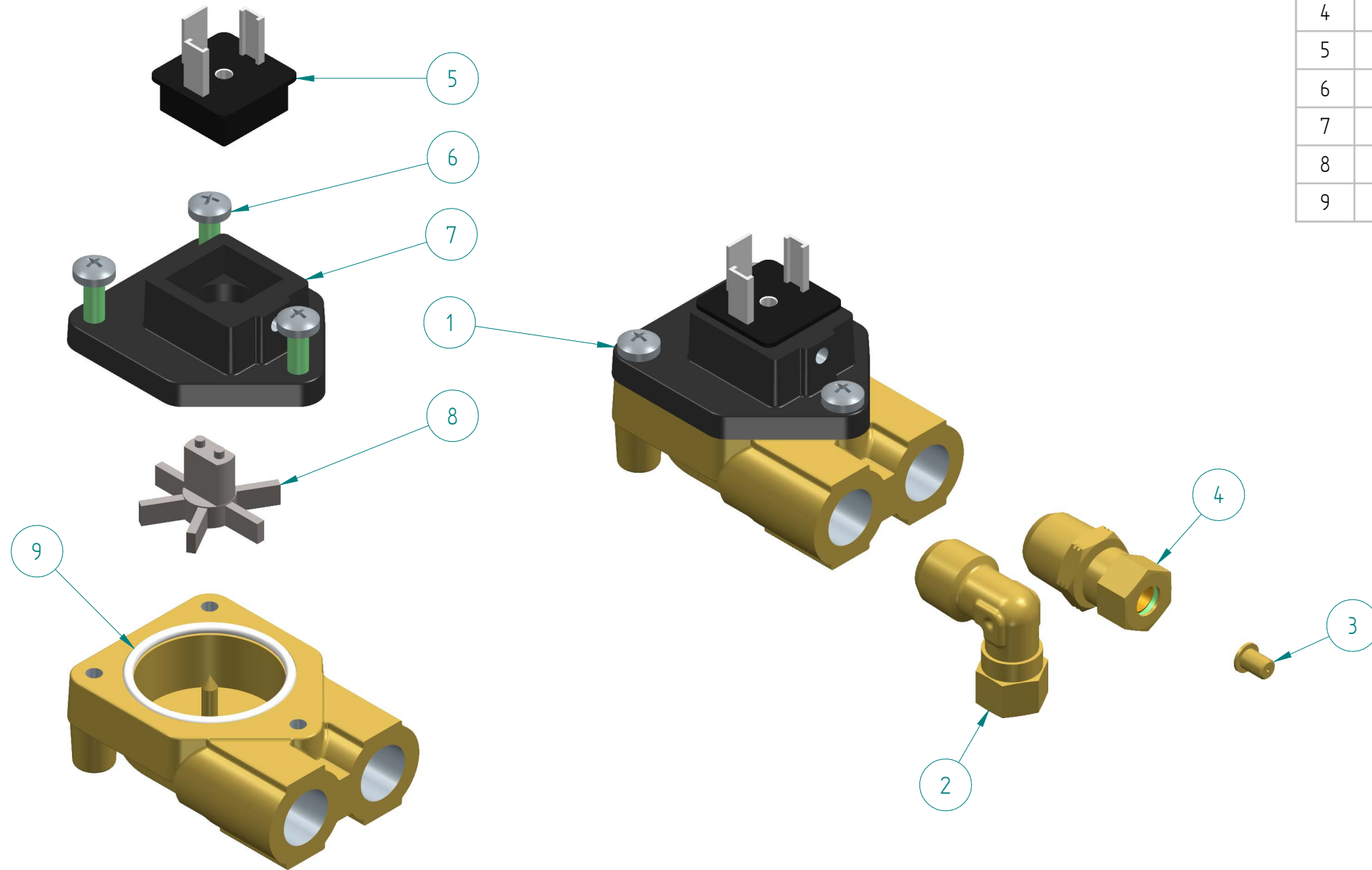


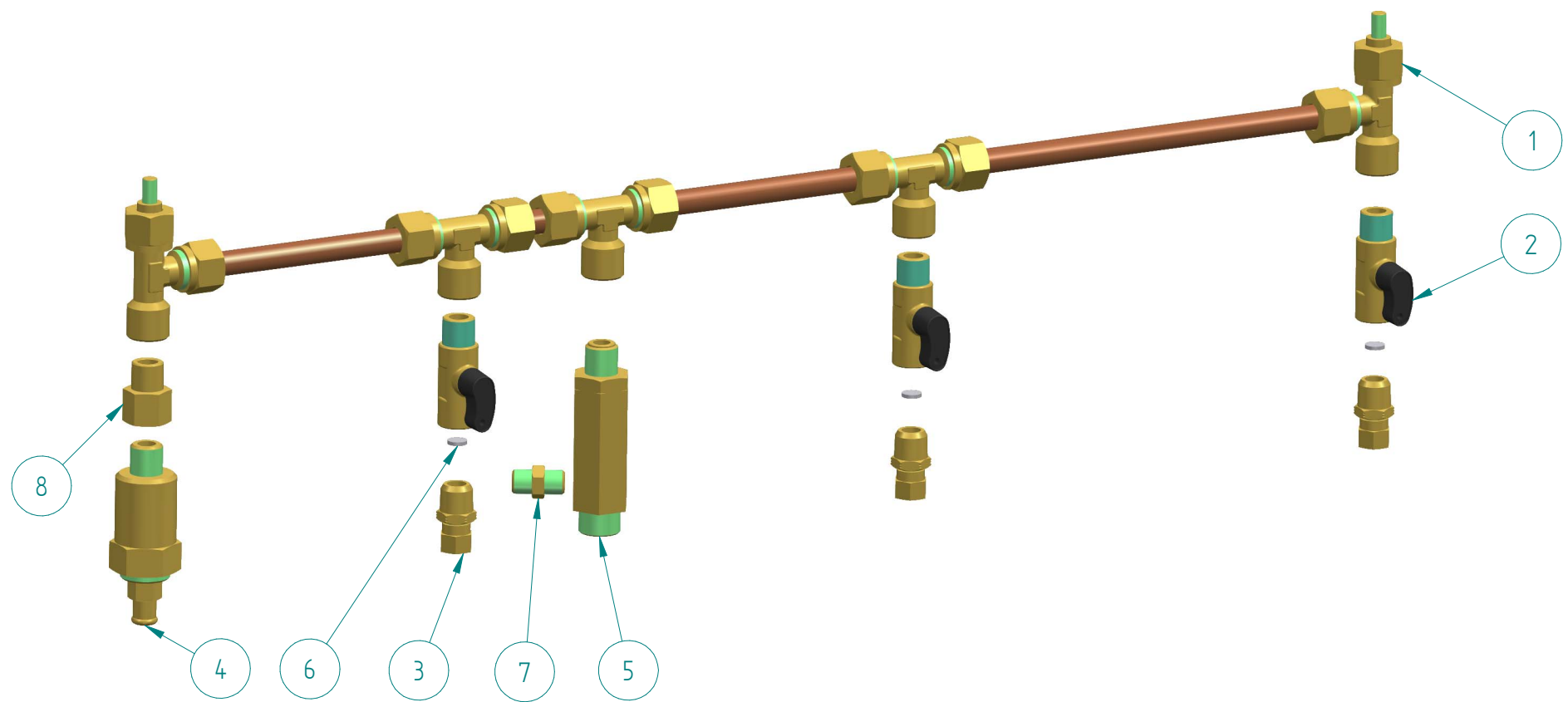
ITEM	CODE	DESCRIPTION	NOTE
	A-MC-0514TF	MOTOPUMP 120W + FLEX PIPE	
	A-MC-0024TF*	MOTOPUMP 165W + FLEX PIPE	
	A-MC-0080TF*	MOTOPUMP 120W + FLEX PIPE	FOR ETL MACHINE
1	B-00-0220A	MOTOR 120W 230V 50/60 HzCLF	
1 a	B-00-0208*	MOTOR 165W 230V 50/60 HzCLF	
1 b	B-00-0086*	MOTOR 165W 220V 60 Hz UL	FOR ETL MACHINE
2	B-00-0010	PUMPING UNIT COUPLING - NYLON	
3	B-00-0009	PUMPING UNIT 100 L.	
4	-	ASSEMBLED CLAMP	NOT ORDINABLE
5	B-00-0278A	NIPPLE3/8" FOR PUMPING EL.	
6	B-00-0011	ANTIVIBRATION 20X20 M6X10 40SH	
7	B-00-0113	FLANGED NUT M6 DIN6923	
8	B-00-0360	FLEX PIPE 3/8" L225 mm	
9	K-0200	KIT BYPASS POMPANTE	
10	B-00-0292	CONDENSER 6 µF 450V	2 GROUPS
10 a	B-00-0006*	CONDENSER 10 µF 450V	3 GROUPS



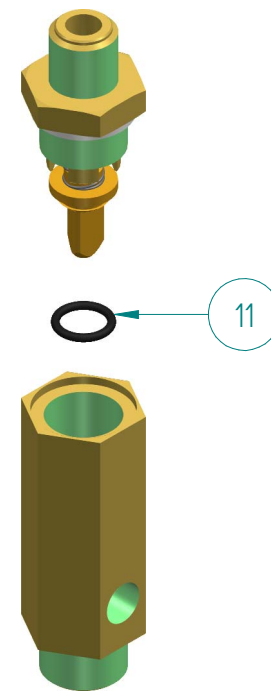
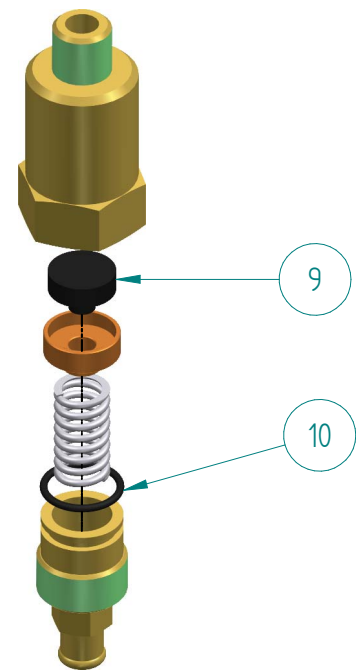
ITEM	CODE	DESCRIPTION	NOTE
	A-MC-5100	HOT WATER GROUP ASSEMBLY	
1	B-00-0021A	STRAIGHT COUPL. 1/4" D6	
2	B-00-0101A	STRAIGHT COUPL. 1/8" D8 CW510L	
3	B-MC-0052	TEA TERMINAL COUPLING	
4	K-0229	WATER LAUNCH UCT AERATOR KIT	
5	B-MC-5006	HOT WATER VALVE SUPPORT	
6	B-00-0313	SOLENOID VALVE 2V 24V D2 (HOT WATER)	
7	B-00-0102	SCREW TE 8.8 M4x8 DIN933	

ITEM	CODE	DESCRIPTION	NOTE
	A-MC-1021	FLOW METER	
1	B-MC-0028	FLOW METER W/ HOLE 1.1	
2	B-00-0014A	FITTING "L" 1/4" D6 CW510L	
3	B-MC-0055	GIGLEUR 0.6 FLOW METER	
4	B-00-0013A	STRAIGHT COUPL. 1/4" D6	
5	B-MC-0197	FLOW METER SENSOR	
6	B-00-0184	SCREW TC+ M4X16 Zn DIN 7985	
7	B-00-0232	FLOW METER COVER	
8	B-00-0231	FLOW METER FAN	
9	B-00-0352	OR 28x2 C.V.	





ITEM	CODE	DESCRIPTION	NOTE
	A-MC-1022	MANIFOLD ASSEMBLY 2GR	
	A-MC-1023*	MANIFOLD ASSEMBLY 3GR	
1	B-MC-1092	MANIFOLD 2 GROUPS	NOT ORDINABLE / SPARE P. COD. A-MC-0582
1 a	B-MC-1093*	MANIFOLD 3 GROUPS	NOT ORDINABLE / SPARE P. COD. A-MC-0583
2	B-00-0022A	BALL TAP 1/4" CW510L	
3	B-00-0013A	STRAIGHT COUPL. 1/4" D6	
4	B-MC-0120A	COMPLETE EXPANSION VALVE 1/4"	
5	B-MC-1146	CHECK VALVE 3/8-1/4-1/8	
6	B-MC-0056	INOX FILTER D8 X 2	
7	B-00-0179A	CONICAL NIPPLE 1/8" MM	
8	B-00-0142A	EXTENSION MF 1/4" MF	
9	B-MC-0123	GASKET D15	
10	B-00-0038	OR FOR EXP. VALVE REGISTER	
11	B-00-0037	OR 8,90X1,9 EPDM	



**DALLA CORTE**  
SPARE PARTS CATALOGUE  
ICON

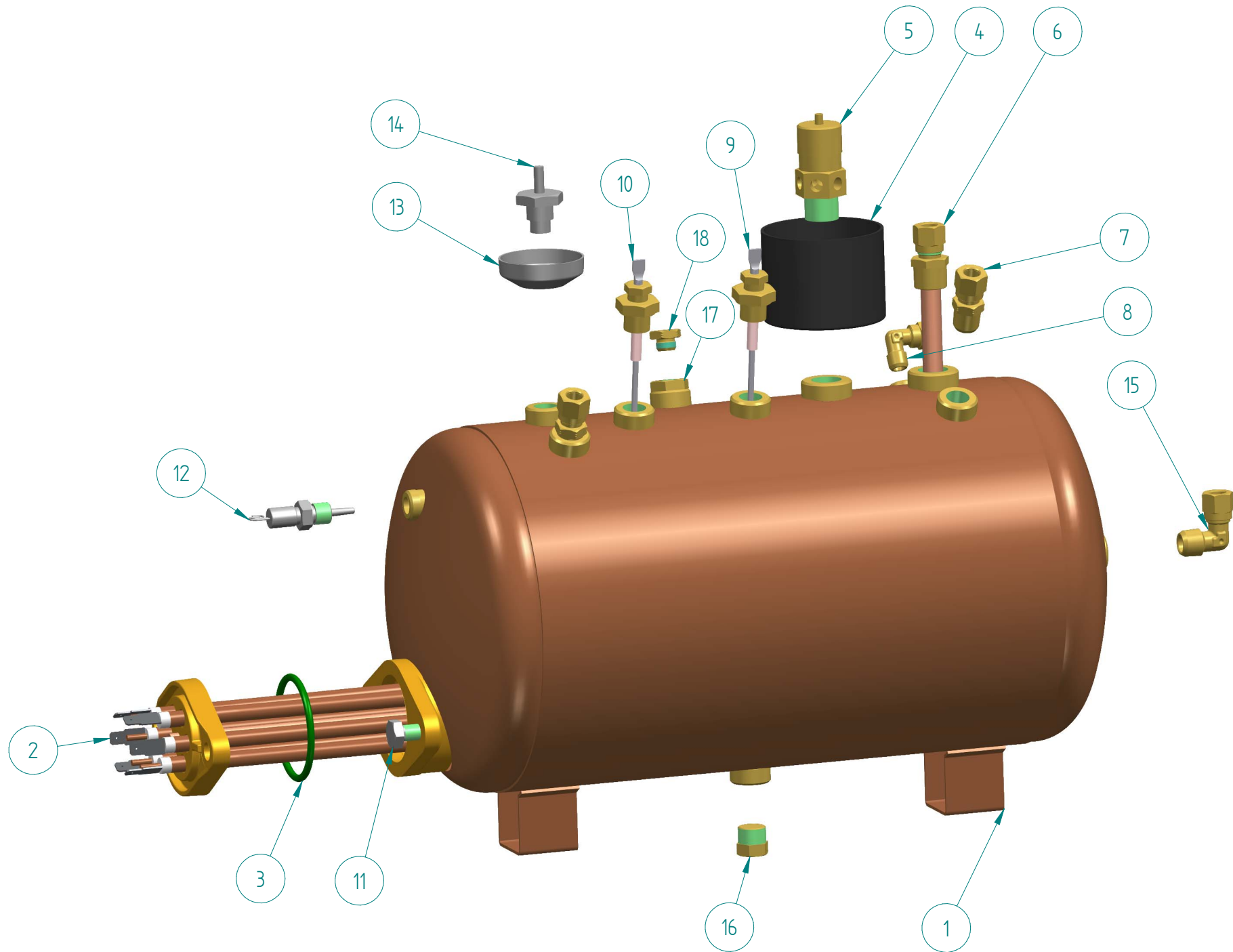
DESCRIPTION  
COMPLETE MANIFOLD  
ASSEMBLY CODE  
A-MC-1022 / A-MC-1023

REV  
02  
EMISSION DATE  
NOVEMBER 2022

NOTE:  
\* ALTERNATIVE TO THE REPRESENTED COMPONENT  
\*\* COMPONENT NOT SHOWN

SHEET  
8





ITEM	CODE	DESCRIPTION	NOTE
	A-MC-1006	COMPLETE BOILER 7 L	
	A-MC-1007*	COMPLETE BOILER 13 L	
1	B-MC-0032	BOILER 7 L	
1 a	B-MC-0156*	BOILER 13 L	
2	B-MC-0029	BOILER RESISTANCE 2400W-230V	
2 a	B-MC-0144*	BOILER RESISTANCE 3500W-230V	
2 b	B-MC-0229*	BOILER RESISTANCE 4500W-230V	
3	B-00-0039	OR 150 Ø 46,04 x 3,53	
4	B-MC-0208	SAFETY VALVE D 17 DRAIN BOX	
5	B-MC-0048	SAFETY VALVE 3/8" 1.5 bar	
6	B-MC-0070	COMPLETE SUCTION PIPE	
7	B-00-0015A	STRAIGHT COUPL 1/4" D8 CW510L	
8	B-00-0130A	L-COUPLING 237 D6 1/8" CW510L	
9	B-MC-0049A	LEVEL PROBE L135	
10	B-MC-0158A	LEVEL PROBE L95	
11	B-00-0112	SCREW TE A2 M8X20 DIN933	
12	B-MC-1132	TEMPERATURE PROBE PT1000 1/8"	
13	B-MC-0209	DRAIN BOX VACUUM VALVE	
14	B-MC-0047	VACUUM VALVE 1/4"	
15	B-00-0177A	L-COUPLING 1/4" D8	
16	B-00-0181A	PLUG 1/4" M	
17	B-00-0171A	REDUCTION MF 1/4"- 1/8"	
18	B-00-0246A	PLUG 1/8" M	

**DALLA CORTE**  
SPARE PARTS CATALOGUE  
ICON

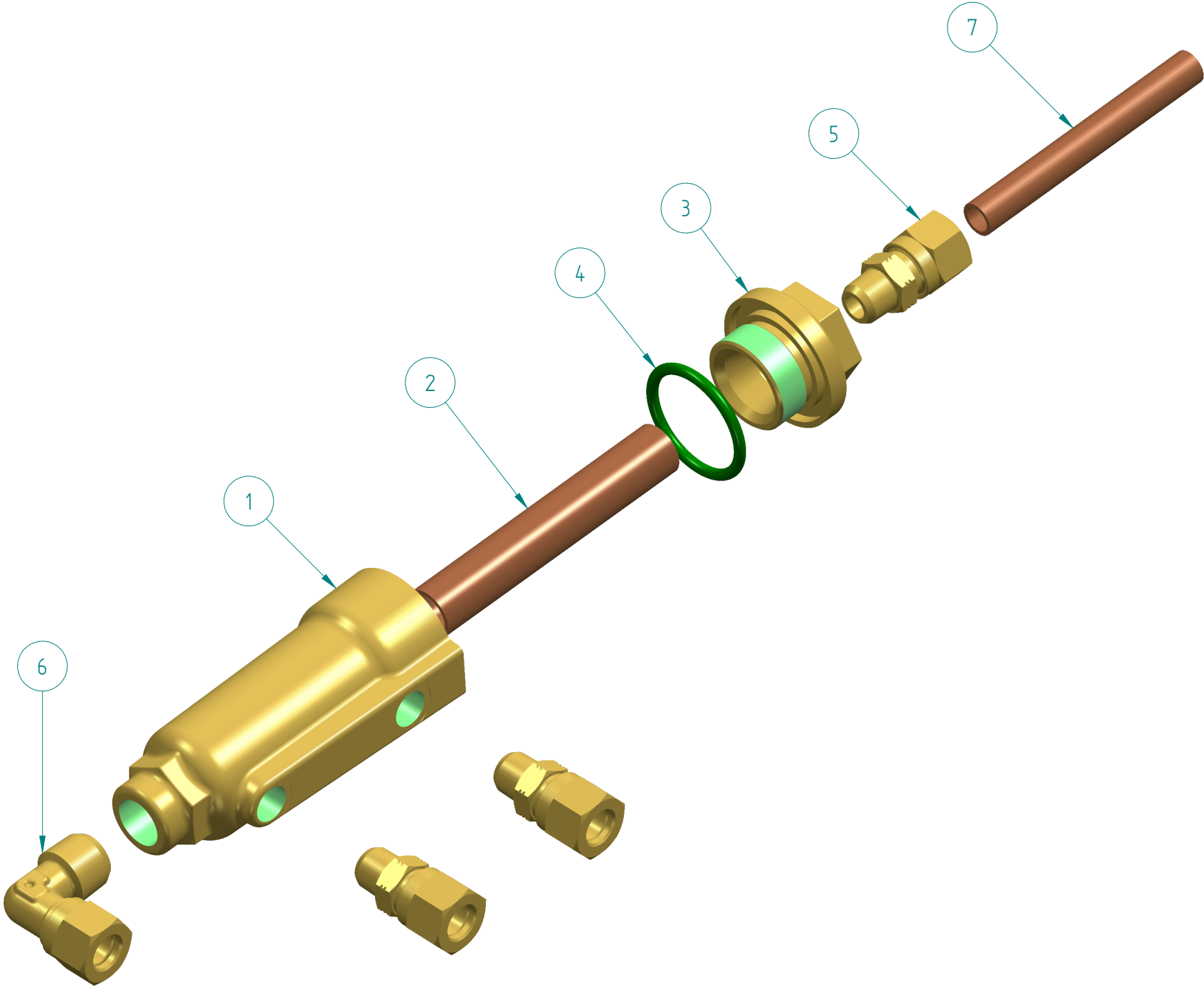
DESCRIPTION  
COMPLETE BOILER  
ASSEMBLY CODE  
A-MC-1006 / A-MC-1007

REV  
02  
EMISSION DATE  
NOVEMBER 2022

NOTE:  
\* ALTERNATIVE TO THE REPRESENTED COMPONENT  
\*\* COMPONENT NOT SHOWN

SHEET  
9

ITEM	CODE	DESCRIPTION	NOTE
	A-MC-1032	COMPLETE EXCHANGER	
1	B-MC-0079	EXCHANGER BODY	
2	B-MC-0081	EXCHANGER INT. PIPE	
3	B-MC-0080	EXCHANGER PLUG	
4	B-00-0047	OR 3093/BS 119 FPM-FDA/70.vd	
5	B-00-0101A	STRAIGHT COUPL. 1/8" D8 CW510L	
6	B-00-0177A	L-COUPLING 1/4" D8	
7	B-MC-1117	EXCH-DRAIN SOL.V .PIPE	



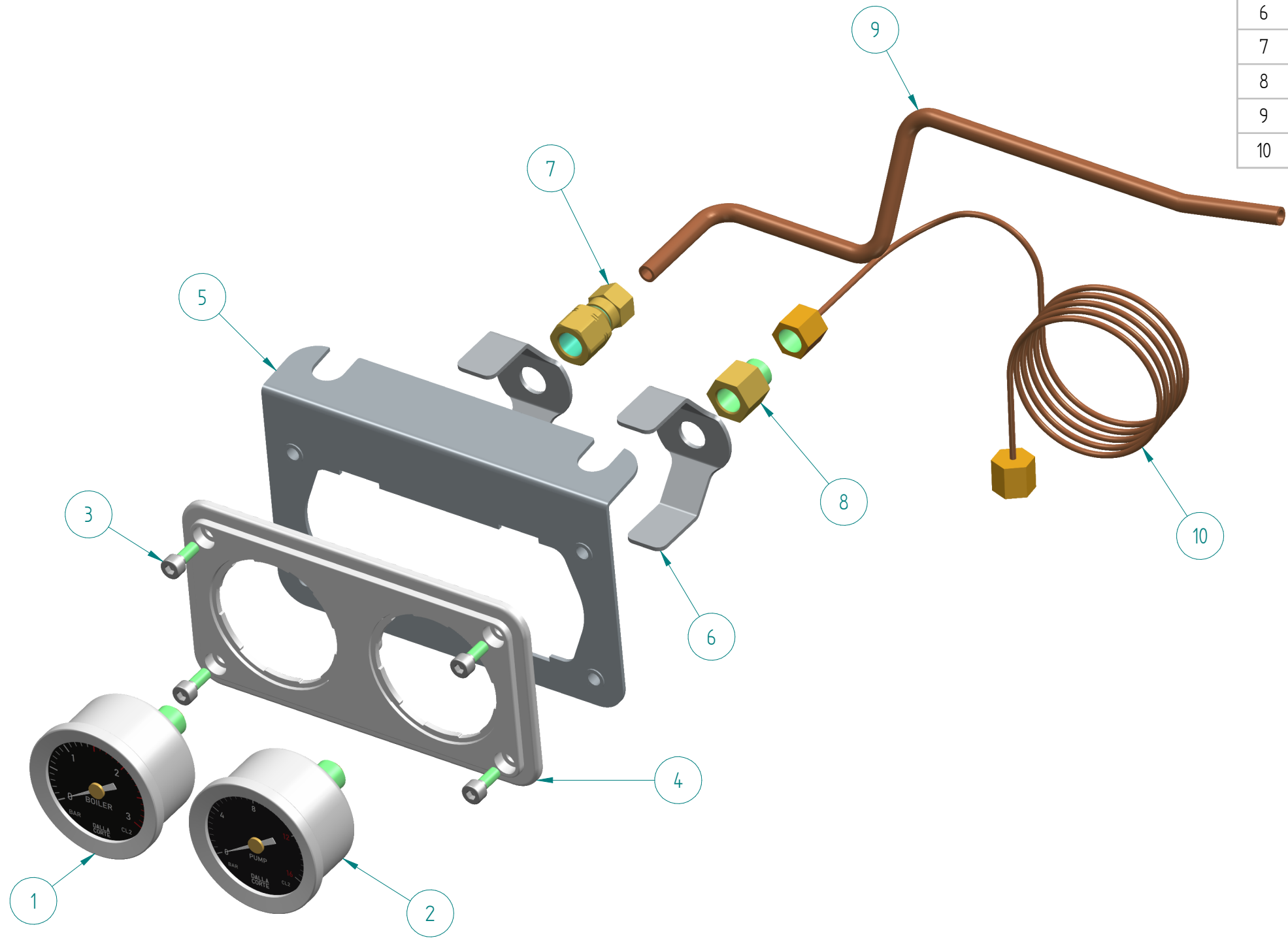
**DALLA CORTE**  
SPARE PARTS CATALOGUE  
ICON

DESCRIPTION	COMPLETE EXCHANGER
ASSEMBLY CODE	A-MC-1032

REV	02
EMISSION DATE	NOVEMBER 2022

NOTE:	* ALTERNATIVE TO THE REPRESENTED COMPONENT
	** COMPONENT NOT SHOWN
	SHEET 10

ITEM	CODE	DESCRIPTION	NOTE
	A-MC-5103	PRESSURE GAUGE ASSEMBLY	
1	B-MC-5108	BOILER PRESSURE GAUGE ICON	
2	B-MC-5109	PRESSURE GAUGE PUMP ICON	
3	B-00-0110	SCREW TCEI A2 M4x10 DIN912	
4	B-MC-1074 ...	RAW MANOMETERS COVER	TO COMPLETE WITH COLOR CODE
5	B-MC-5013	PRESSURE GAUGE BRACKET	
6	B-MC-1105	PRESSURE GAUGE U-CLAMP	
7	B-00-0134A	STRAIGHT CONNECTION 6 1/8" FEM	
8	B-00-0187A	EXTENSION 1/8 MF CW510L	
9	B-MC-0585	PRESSURE GAUGE BOILER PIPE	ALSO ORDER n.2 PZ B-00-0012A
10	B-MC-0071	WATER PRESSURE GAUGE PIPE	



COLOR CODE ( ex. B-MC-1074-MB )	
AS	BRUSHED ALUMINUM
MB	MATT BLACK

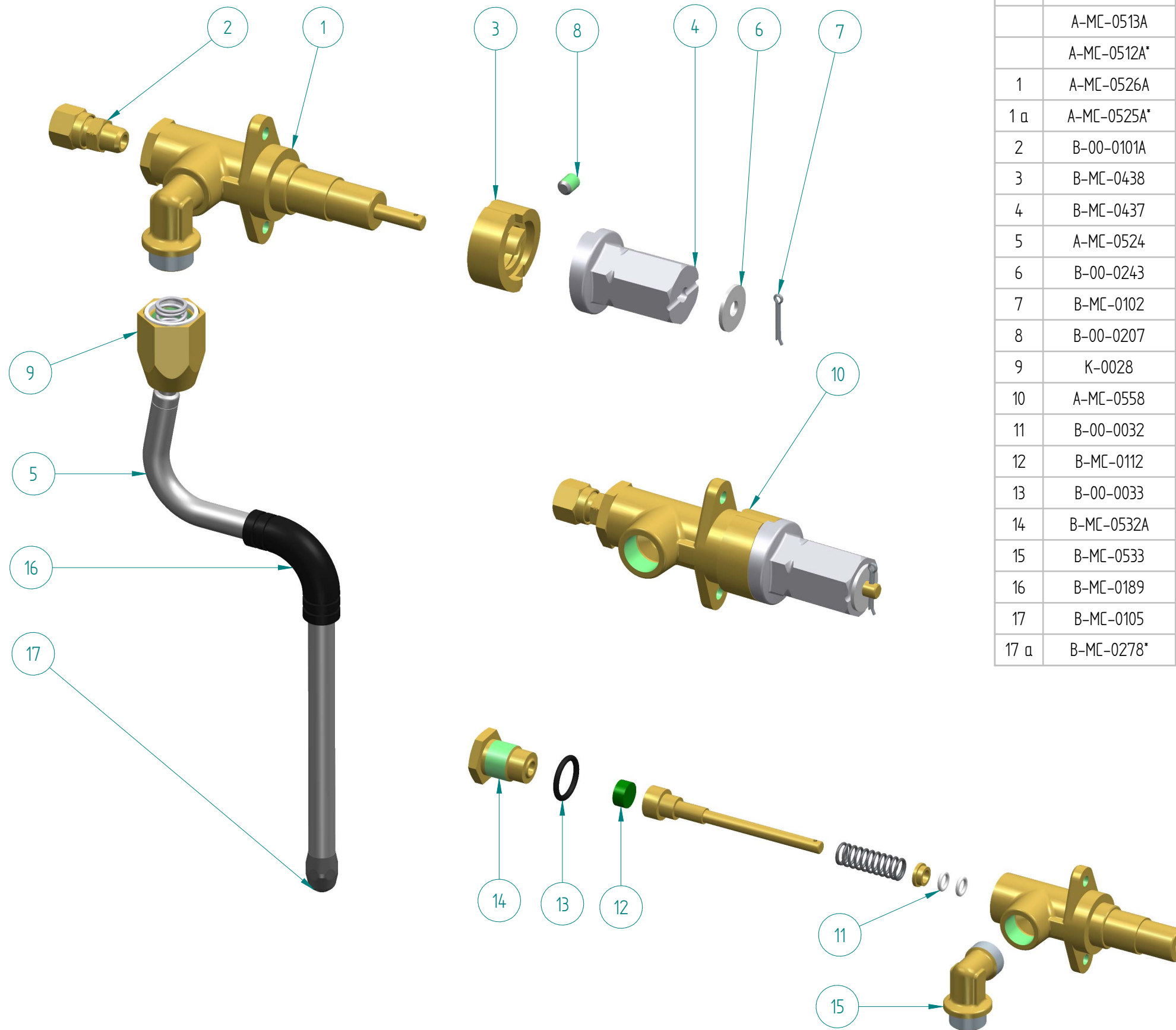
**DALLA CORTE**  
SPARE PARTS CATALOGUE  
ICON

DESCRIPTION  
PRESSURE GAUGE ASSEMBLY  
ASSEMBLY CODE  
A-MC-5103

REV  
02  
EMISSION DATE  
NOVEMBER 2022

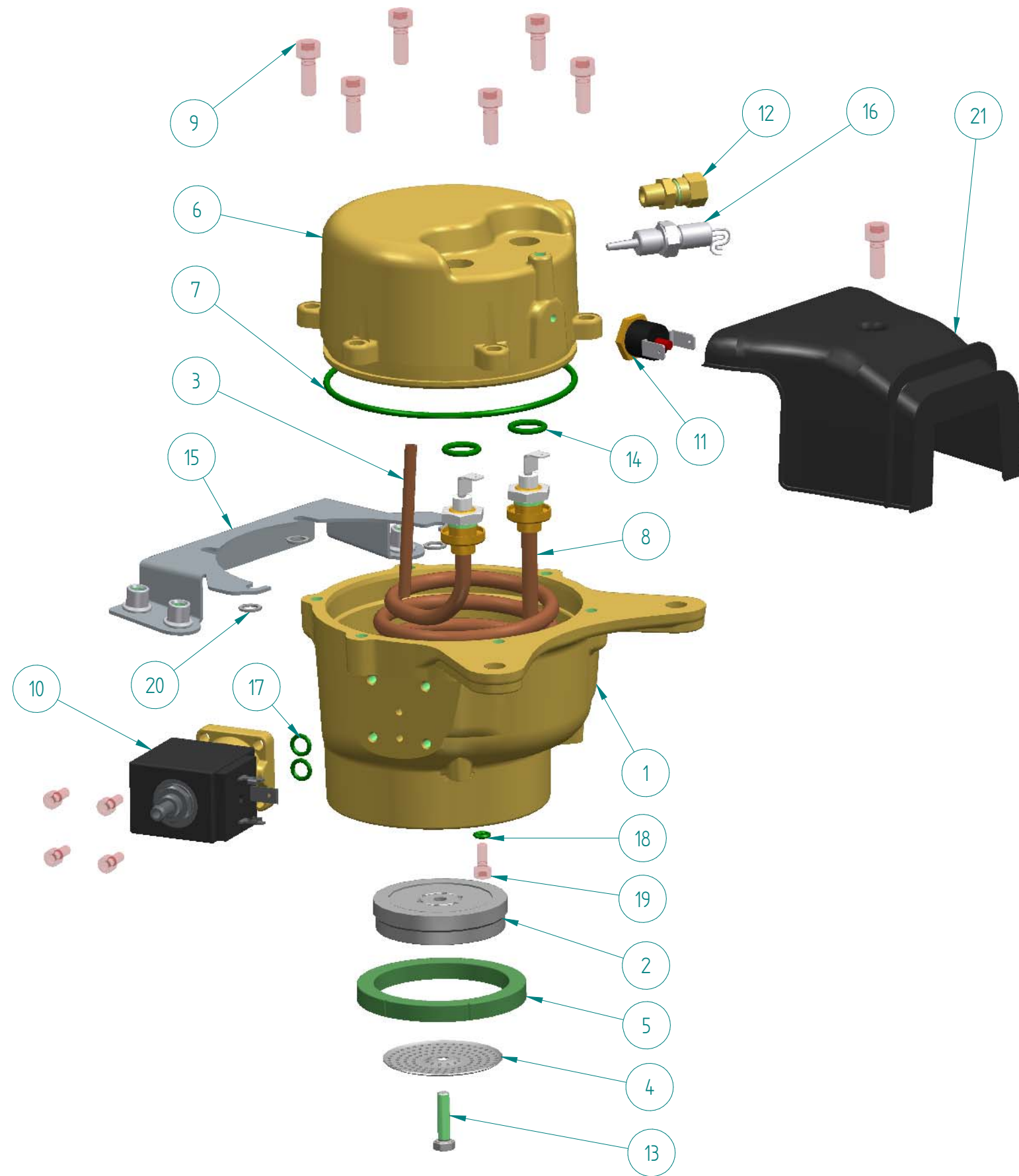
NOTE:  
\* ALTERNATIVE TO THE REPRESENTED COMPONENT  
\*\* COMPONENT NOT SHOWN

SHEET  
11



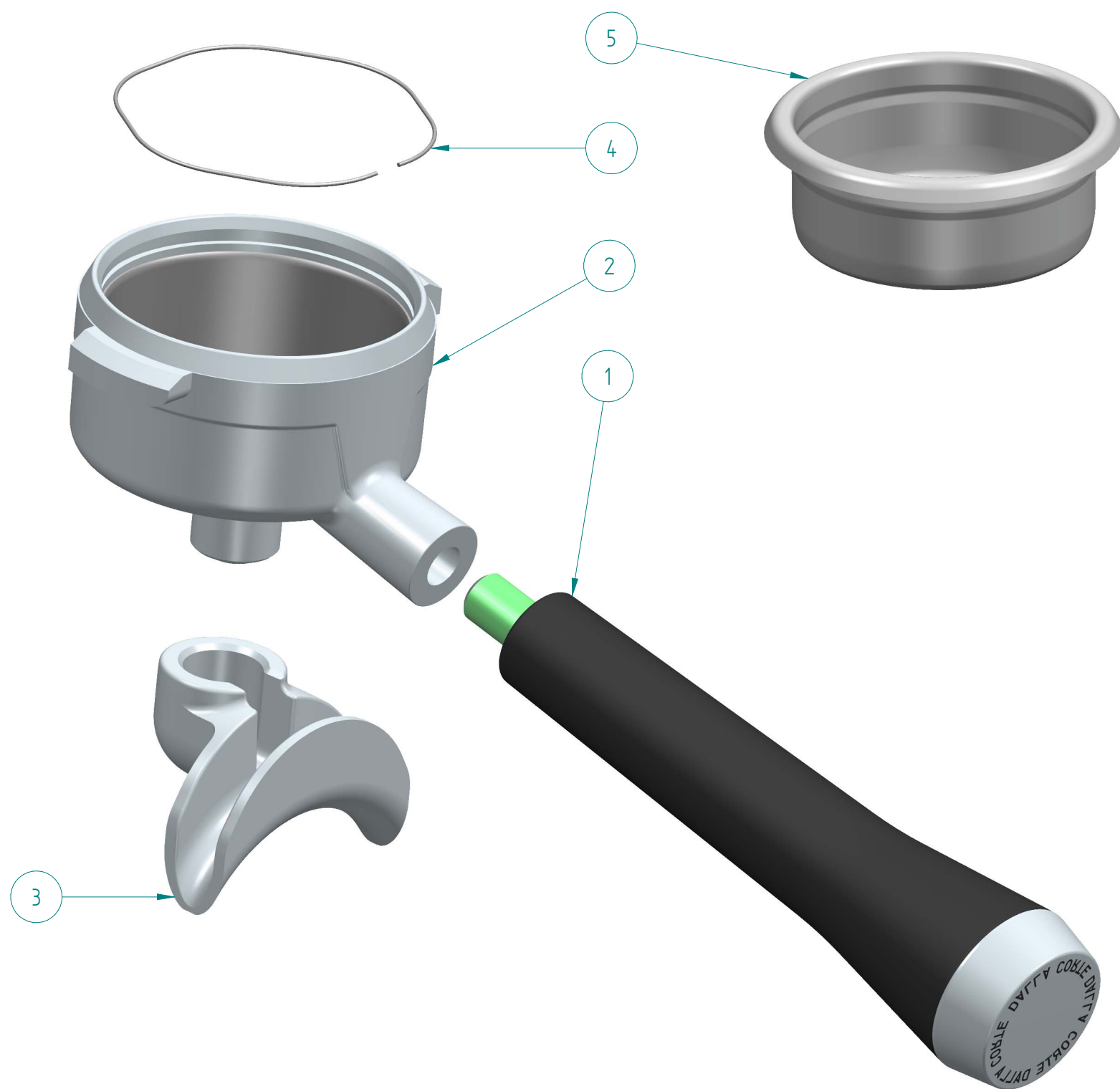
ITEM	CODE	DESCRIPTION	NOTE
	A-MC-0513A	ASSEMBLY LH STEAM TAP	
	A-MC-0512A*	ASSEMBLY RH STEAM TAP	
1	A-MC-0526A	LEFT STEAM TAP	
1 a	A-MC-0525A*	RIGHT STEAM TAP	
2	B-00-0101A	STRAIGHT COUPL. 1/8" D8 CW510L	
3	B-MC-0438	CAM COUNT.BUSHING FOR TAP	
4	B-MC-0437	CAM BUSHING FOR TAP	
5	A-MC-0524	COMPLETE STEAM PIPE	COMPLETE WITH KIT K-0028
6	B-00-0243	WASHER A2 DIN 9021 M6	
7	B-MC-0102	STEAM TAP SPLIT PIN	
8	B-00-0207	GRUB SCREW P/A A2 M6x8 DIN 913	
9	K-0028	STEAM ARTICULATION KIT	
10	A-MC-0558	EVO2 STEAM TAP WITH CAM	
11	B-00-0032	OR 5.7 X 1.9 VITON	
12	B-MC-0112	STEAM TAP SHUTTER GASKET	
13	B-00-0033	OR 121 NBR	
14	B-MC-0532A	STEAM TAP COUNTER-BODY	
15	B-MC-0533	STEAM TAP 90° FITTING	
16	B-MC-0189	STEAM PIPE SHEATH	
17	B-MC-0105	ST.PIPE SPRAYER 3 HOLES W/ OR	
17 a	B-MC-0278*	ST.PIPE SPRAYER 4 HOLES W/ OR	



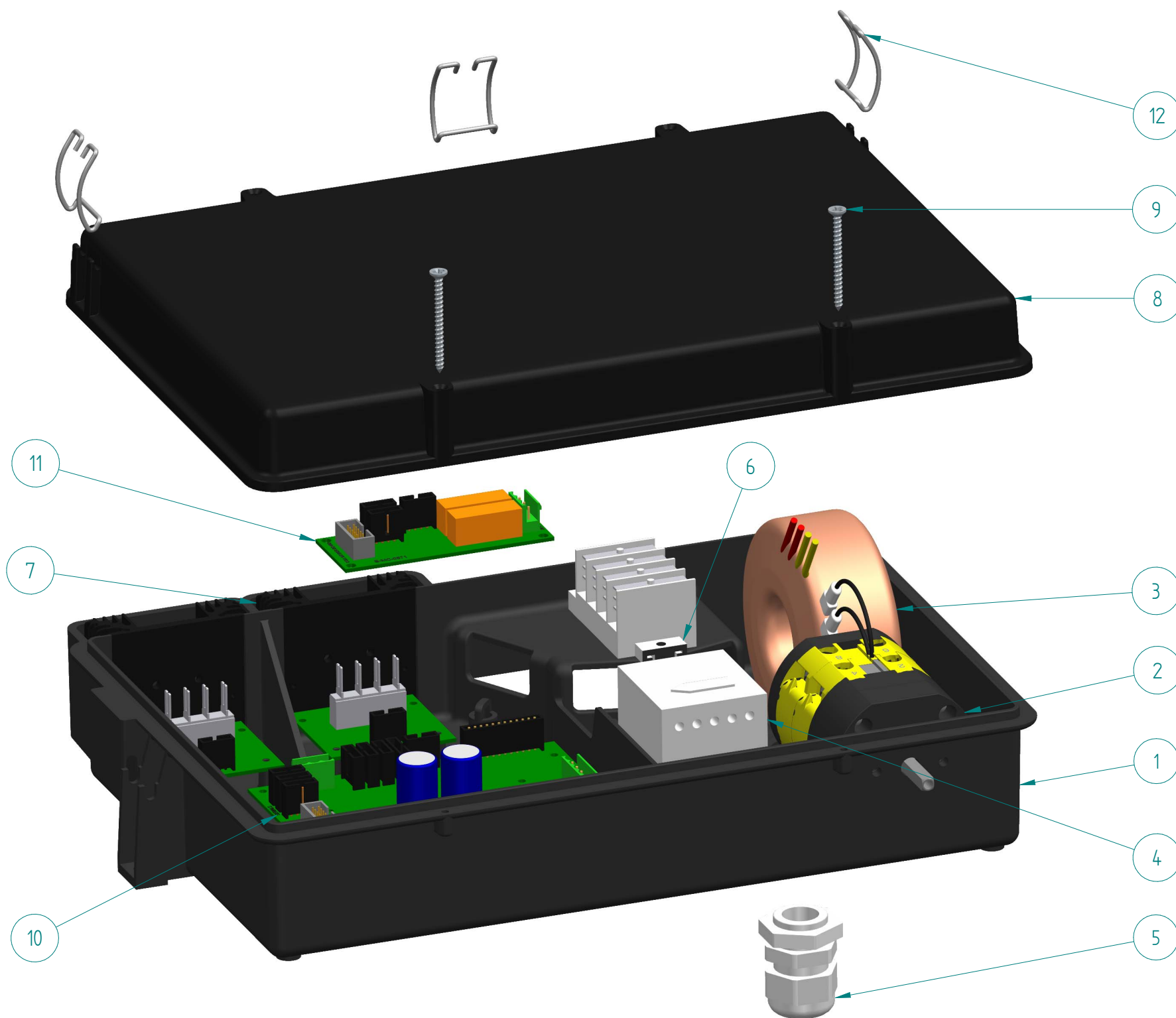


ITEM	CODE	DESCRIPTION	NOTE
	A-MC-5102	ASSEMBLED SUPPLY UNIT	
1	B-MC-0034	GROUP BODY	
2	B-MC-1617	SHOWER HOLDER H12.5 INOX	
2 a	B-MC-1628*	SHOWER HOLDER H14 INOX	
2 b	B-MC-1624*	SHOWER HOLDER H10 INOX	
3	B-MC-0091	GROUP INNER PIPE	
4	B-MC-0461	SCREEN SHOWER	
4 a	B-MC-0039*	SHOWER	
4 b	B-MC-0039A*	NANOTECH. TREATMENT SHOWER	
5	B-MC-0128	GASKET H7 70/75 SH	
5 a	B-MC-0468*	FILTER H. GASKET H7.7 70/75SH	
5 b	B-MC-0470*	GASKET H6.5 68X54 W/NOTCHES	
5 c	B-MC-0714*	GASKET H7 85 SH HNBR BLACK	
5 d	B-MC-0269*	GASKET DEPTH TH. 0.5	
6	B-MC-0004	GROUP BELL	
7	B-00-0034	OR 3375/BS 154 94,92x2,62	
8	B-MC-0003	GROUP HEAT ELEMENT 230V 850W	ALSO ORDER n.2 PZ B-00-0046A
9	B-00-0109	SCREW TCEI A2 M6x16 DIN912	
10	B-00-0025	SOLENOID VALVE 3 WAY 24V AC	
11	B-00-0024	SAFETY THERMOSTAT 1F 16A	
12	B-00-0012A	STRAIGHT COUPL. 1/8" D6 CW510L	
12 a	B-00-0130A*	L-COUPLING 237 D6 1/8"	FOR HIGH MACHINE
13	B-00-0054	SCREW TE A2 M5X20 DIN933 MOCA	SHOWER HOLDER H12,5 / 14
13 a	B-00-0205*	SCREW TE A2 M5X16 DIN933	FOR SHOWER HOLDER H10
14	B-00-0046A	OR 11,30 x 2,40 FPM-FDA/70.vd	
15	B-MC-5007	GROUP GRID SUPPORT	
16	B-MC-1132	TEMPERATURE PROBE PT1000 1/8"	
17	B-00-0036	OR 105 VITON	
18	B-00-0100	OR 2015/BS 007 3,68x1,78	
19	B-00-0110	SCREW TCEI A2 M4x10 DIN912	
20	B-MC-5403	SPACER D9,5x6,5x1	
21	B-MC-0211	GROUP HEATING ELEMENT PROTEC.	

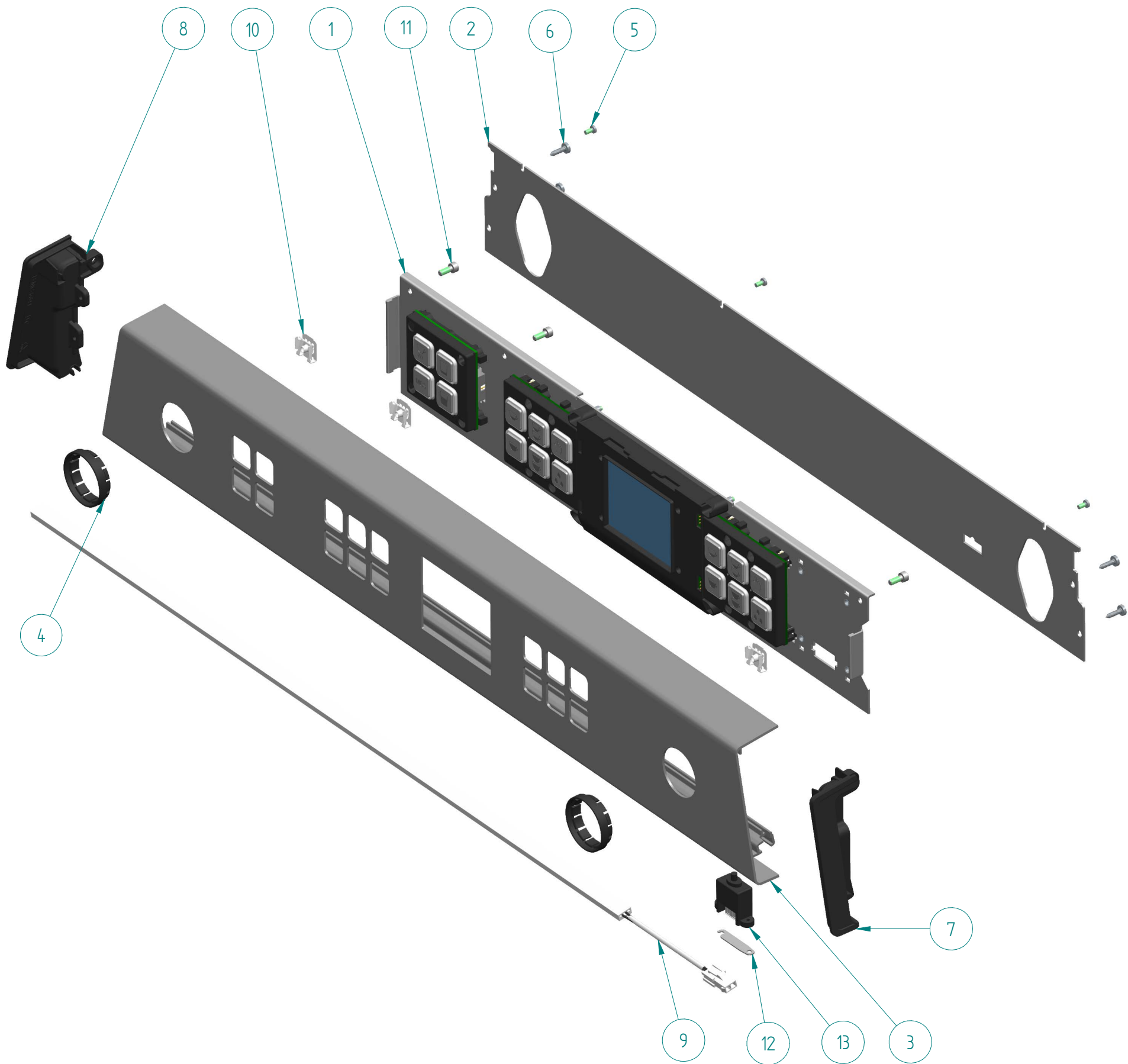




ITEM	CODE	DESCRIPTION	NOTE
	A-PC-0010	2-CUP D54 PORTAFILTER MY20	
	A-PC-0010-0*	2-CUP D54 PORTAFILTER OAK MY20	
	A-PC-0010-WN*	2-CUP D54 PORTAFILTER WALNUT MY20	
	A-PC-0009*	1-CUP D54 PORTAFILTER MY20	
	A-PC-0009-0*	1-CUP D54 PORTAFILTER OAK MY20	
	A-PC-0009-WN*	1-CUP D54 PORTAFILTER WALNUT MY20	
	A-PC-0011*	NAKED PORTAFILTER D54 MY20	
	A-PC-0011-0*	NAKED PORTAFILTER D54 OAK MY20	
	A-PC-0011-WN*	NAKED PORTAFILTER D54 WALNUT MY20	
1	A-PC-0008	FILTER-HOLDER KNOB MY20	
2	A-PC-0007	COATED PORTAFILTER BODY D54	
3	B-MC-0078	CHROMED 2-SHOT SPOUT	
3 a	B-MC-0077*	CHROMED 1-SHOT SPOUT	
4	B-00-0415	PORTAFILTER SPRING 1.1	
5	B-MC-0409C	2 CUP FILTER H24,5 (<14gr)	TO BE ORDERED SEPARATELY
5 a	B-MC-0041B*	2 CUP FILTER H26 (14-15gr)	TO BE ORDERED SEPARATELY
5 b	B-MC-0394C*	2 CUP FILTER H28 (15-18gr)	TO BE ORDERED SEPARATELY
5 c	B-MC-0432B*	2 CUP FILTER H32 (>21gr)	TO BE ORDERED SEPARATELY
5 d	B-MC-0729B*	2 CUP FILTER H30 (18-21gr)	TO BE ORDERED SEPARATELY
5 e	B-MC-0224*	BLIND FILTER	TO BE ORDERED SEPARATELY
5 f	B-MC-0040B*	1 CUP FILTER H25 (7-9gr)	TO BE ORDERED SEPARATELY
5 g	B-MC-0271B*	1 CUP FILTER H23 (6-7gr)	TO BE ORDERED SEPARATELY
5 h	B-MC-0686B*	1 CUP FILTER H27 (9-10gr)	TO BE ORDERED SEPARATELY



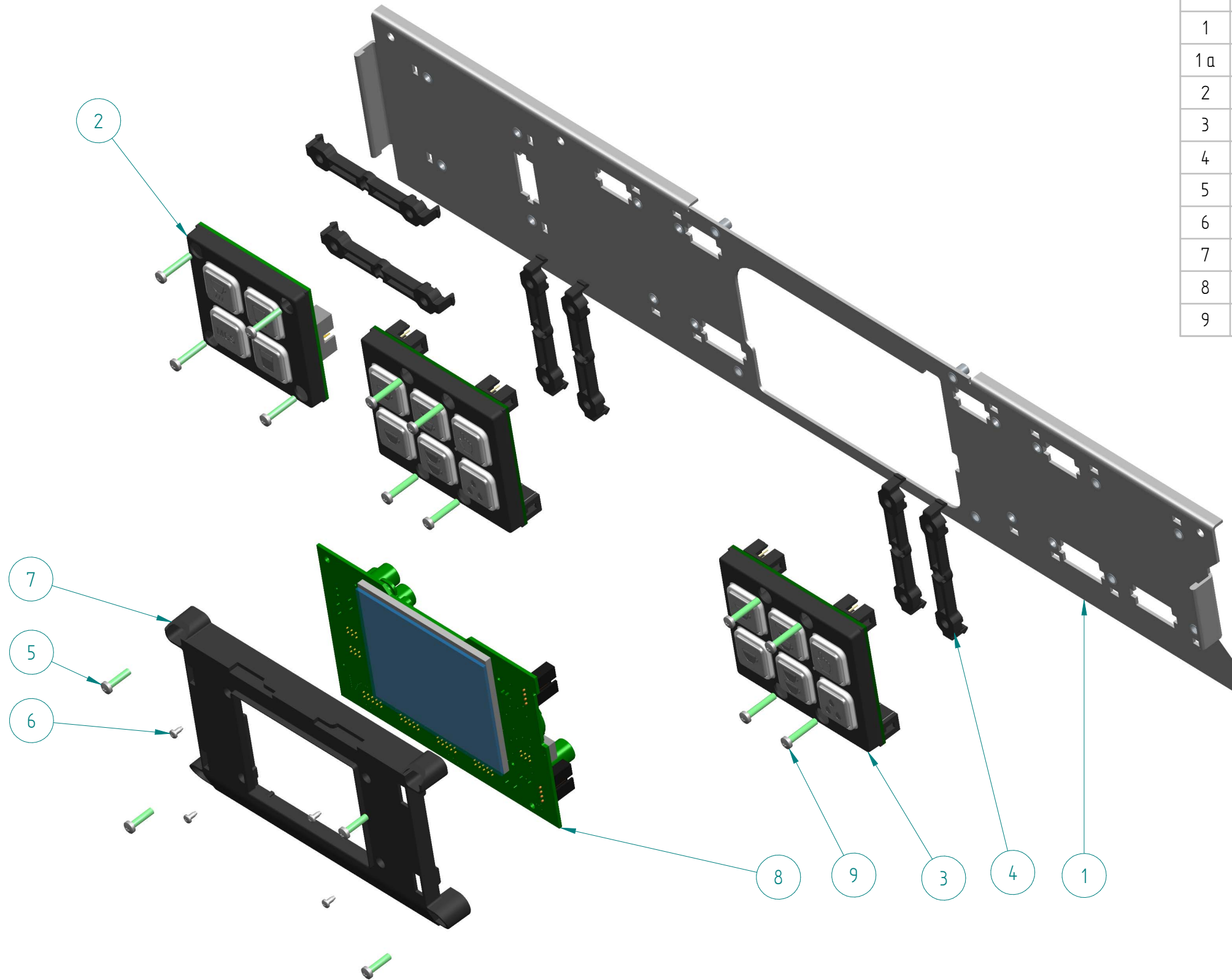
ITEM	CODE	DESCRIPTION	NOTE
	A-MC-1515	ELECTRICAL SYSTEM 3GR	
	A-MC-1514*	ELECTRICAL SYSTEM 2GR	
1	B-MC-0015	ELECTRIC BOX	
2	B-00-0002	SWITCH 4P	SPARE P. COD. A-MC-0108
3	B-00-0169	TRANSF. 230V-24V 95VA/12V 15VA	
4	B-00-0004	CONTACTOR 4P 25A 400V B230V	
5	B-00-0001	CABLE GLAND PG16 + NUT	
6	A-MC-0054	FASTON 4-POLE 6.3 TERM. BOARD	
7	A-MC-1039	TRIAC UNIT	
8	B-MC-0016	ELECTRIC BOX COVER	
9	B-00-0116	SELF-TAPPING SC.3.5x45 DIN7982	
10	B-MC-0570	MANAG. ELECTRIC BOARD	
11	B-MC-0571	3RD+4TH GR EXPANSION BOARD	
12	B-MC-1175	ELECTRIC BOX CLOSING SPRING	
13	B-MC-0656**	3PH+N+T POWER CABLE	
13a	B-MC-0657**	1PH. POWER CABLE	
14	B-MC-1566**	ELECTRIC BOX WIRING 3GR	
14a	B-MC-1565**	ELECTRIC BOX WIRING 2GR	
15	A-MC-5200**	WIRING ACCESSORIES 2GR	
15 a	A-MC-5204**	WIRING ACCESSORIES 3GR	
16	B-00-0461**	CS 1 µF SUPPRESSOR FILTER	



ITEM	CODE	DESCRIPTION	NOTE
	A-MC-5306...	COMPLETE UPPER FRONT 2GR	TO COMPLETE WITH COLOR CODE
	A-MC-5307* ...	COMPLETE UPPER FRONT 3GR	TO COMPLETE WITH COLOR CODE
1	A-MC-5205	BUTTON PANEL ASSY 2 GR	NOT ORDINABLE / SEE DETAIL SHEET 17
1 α	A-MC-5206*	BUTTON PANEL ASSY 3 GR	NOT ORDINABLE / SEE DETAIL SHEET 17
2	B-MC-5364	CONTROL PANEL CLOSURE 2GR	
2 α	B-MC-5365*	CONTROL PANEL CLOSURE 3GR	
3	B-MC-5359...	CONTROLS PANEL 2GR	TO COMPLETE WITH COLOR CODE
3 α	B-MC-5360* ...	CONTROLS PANEL 3GR	TO COMPLETE WITH COLOR CODE
4	B-MC-5349	KONB SEAT RING	
5	B-00-0182	SCREW TC+ M3x6 DIN7985 ZN	
6	B-00-0125	TAPPING SCREW TC+ 3,9 x 13 DIN	
7	B-MC-5340	CONTROL PANEL PROFILE RIGHT	
8	B-MC-5341	CONTROL PANEL PROFILE LEFT	
9	B-MC-5201	COMPLETE LED BAR 2GR	
9 α	B-MC-5202*	COMPLETE LED BAR 3GR	
10	B-00-0482	CLIP M4	
11	B-00-0110	SCREW TCEI A2 M4x10 DIN912	
12	B-MC-5377A	USB COVER	
13	B-MC-1623	AMP USB FEMALE CABLE	
14	B-MC-5209**	WIRING UPPER FRONT 2GR	
14α	B-MC-5208**	WIRING UPPER FRONT 3GR	
15	A-MC-5200**	2GR WIRING ACCESSORIES	
15 α	A-MC-5204**	3GR WIRING ACCESSORIES	

COLOR CODE ( ex. A-MC-5306-MB )	
AS	BRUSHED ALUMINUM
MB	MATT BLACK
N	NEBULA BLACK
SG	SPACE GREY
SR	SPARKLING RED
W	ARTIC WHITE

ITEM	CODE	DESCRIPTION	NOTE
	A-MC-5205	BUTTON PANEL ASSY 2 GR	NOT ORDINABLE
	A-MC-5206*	BUTTON PANEL ASSY 3 GR	NOT ORDINABLE
1	B-MC-5367	SHEETM. CONTROLS SUPPORT 2GR	
1 a	B-MC-5368*	SHEETM. CONTROLS SUPPORT 3GR	
2	A-MC-5207	BUTTON PANEL ICON	
3	A-MC-5201	GROUP BUTTON PANEL 6T ICON	
4	B-MC-5206	BUTTON PANEL SPACER	
5	B-00-0261	SCREW TC+ A2 M3x12 DIN7985	
6	B-00-0365	SELF-TAPPING SC. TC+ 2.2x4,5	
7	B-MC-5205	COVER PCB DISPLAY	
8	B-MC-1513	TOUCH DISPLAY	
9	B-00-0192	SCREW TC+ A2 M3x16 DIN7985	



**DALLA CORTE**  
SPARE PARTS CATALOGUE  
ICON

DESCRIPTION  
BUTTON PANEL ASSEMBLY

ASSEMBLY CODE  
A-MC-5205 / A-MC-5206

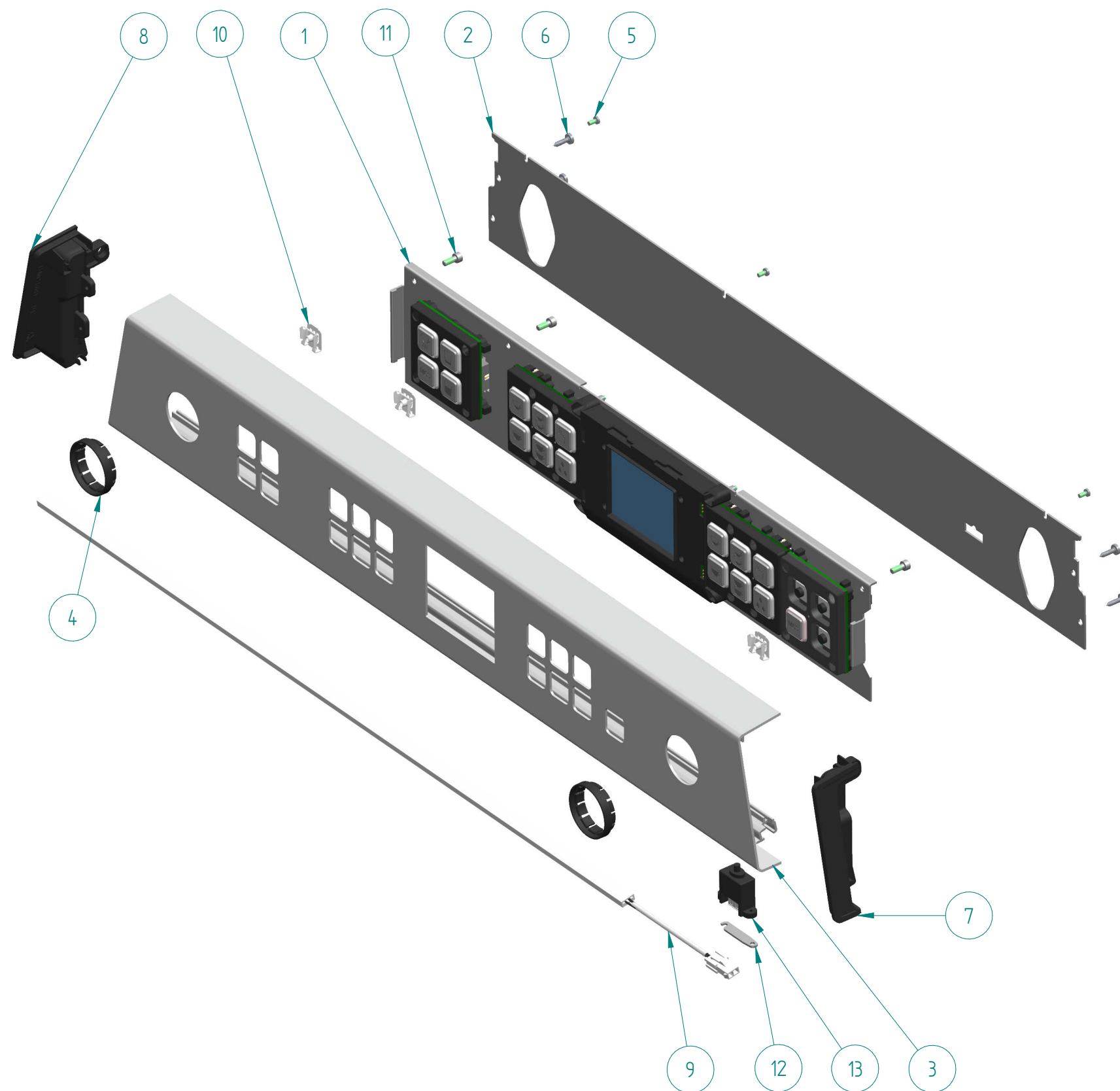
REV  
02

EMISSION DATE  
NOVEMBER 2022

NOTE:  
\* ALTERNATIVE TO THE REPRESENTED COMPONENT  
\*\* COMPONENT NOT SHOWN

SHEET  
17



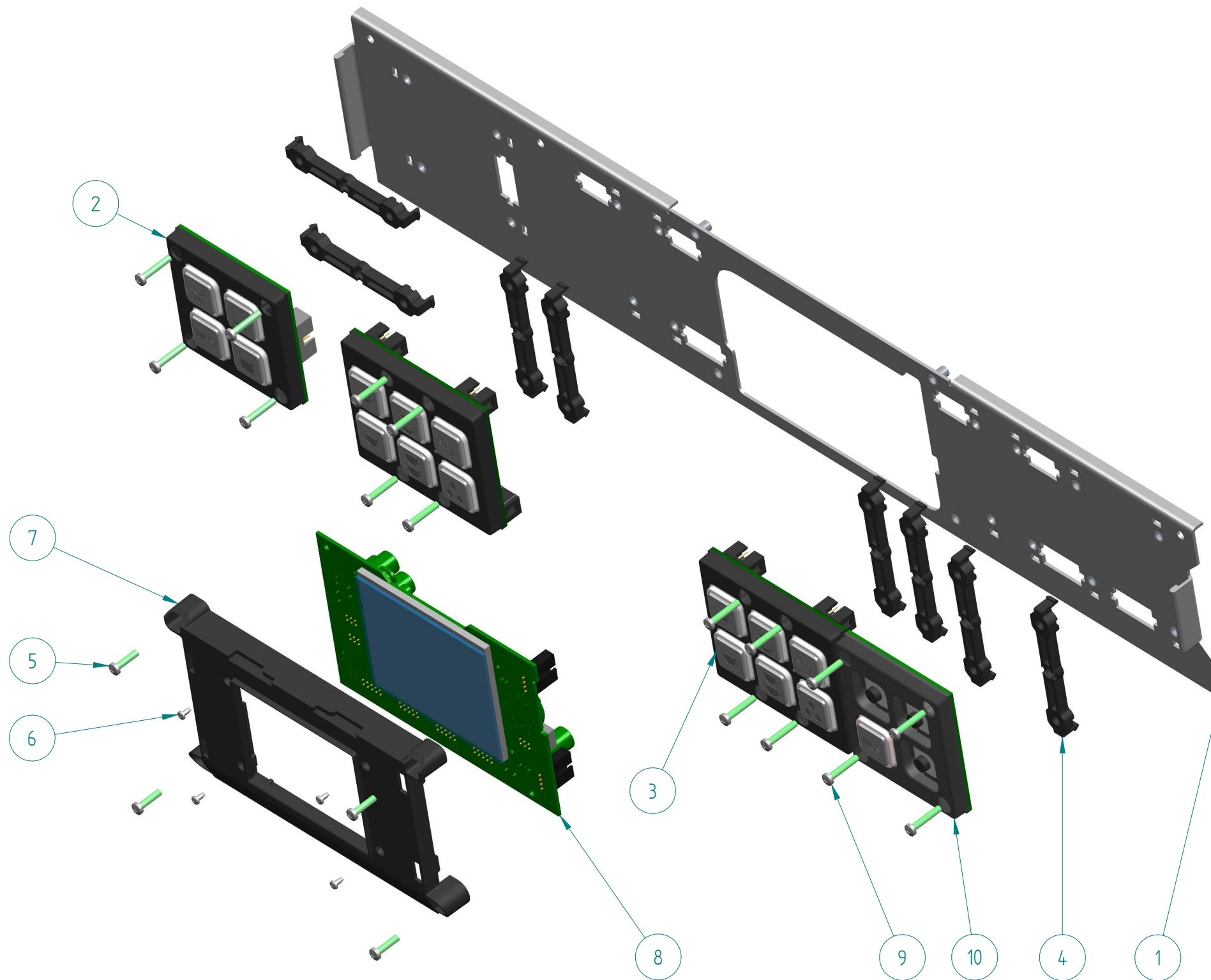


ITEM	CODE	DESCRIPTION	NOTE
	A-MC-5300 ...	COMPLETE UPPER FRONT 2GR 2MCS	TO COMPLETE WITH COLOR CODE
	A-MC-5301...	COMPLETE UPPER FRONT 2GR 2MCS	TO COMPLETE WITH COLOR CODE
1	A-MC-5202	BUTTON PANEL ASSY 2GR 2MCS	NOT ORDINABLE / SEE DETAIL SHEET 19
1 a	A-MC-5203*	BUTTON PANEL ASSY 2GR 3MCS	NOT ORDINABLE / SEE DETAIL SHEET 19
2	B-MC-5364	CONTROL PANEL CLOSURE 2GR	
2 a	B-MC-5365*	CONTROL PANEL CLOSURE 3GR	
3	B-MC-5337...	CONTROLS PANEL 2GR MCS TWIN	TO COMPLETE WITH COLOR CODE
3 a	B-MC-5338* ...	CONTROLS PANEL 3GR MCS TWIN	TO COMPLETE WITH COLOR CODE
4	B-MC-5349	KONB SEAT RING	
5	B-00-0182	SCREW TC+ M3x6 DIN7985 ZN	
6	B-00-0125	TAPPING SCREW TC+ 3,9 x 13 DIN	
7	B-MC-5340	CONTROL PANEL PROFILE RIGHT	
8	B-MC-5341	CONTROL PANEL PROFILE LEFT	
9	B-MC-5201	COMPLETE LED BAR 2GR	
9 a	B-MC-5202*	COMPLETE LED BAR 3GR	
10	B-00-0482	CLIP M4	
11	B-00-0110	SCREW TCEI A2 M4x10 DIN912	
12	B-MC-5377A	USB COVER	
13	B-MC-1623	AMP USB FEMALE CABLE	
14	B-MC-5207**	WIRING UPPER FRONT 2GR MCS	
14 a	B-MC-5210**	WIRING UPPER FRONT 3GR MCS	
15	A-MC-5200**	2GR WIRING ACCESSORIES	
15 a	A-MC-5204**	3GR WIRING ACCESSORIES	

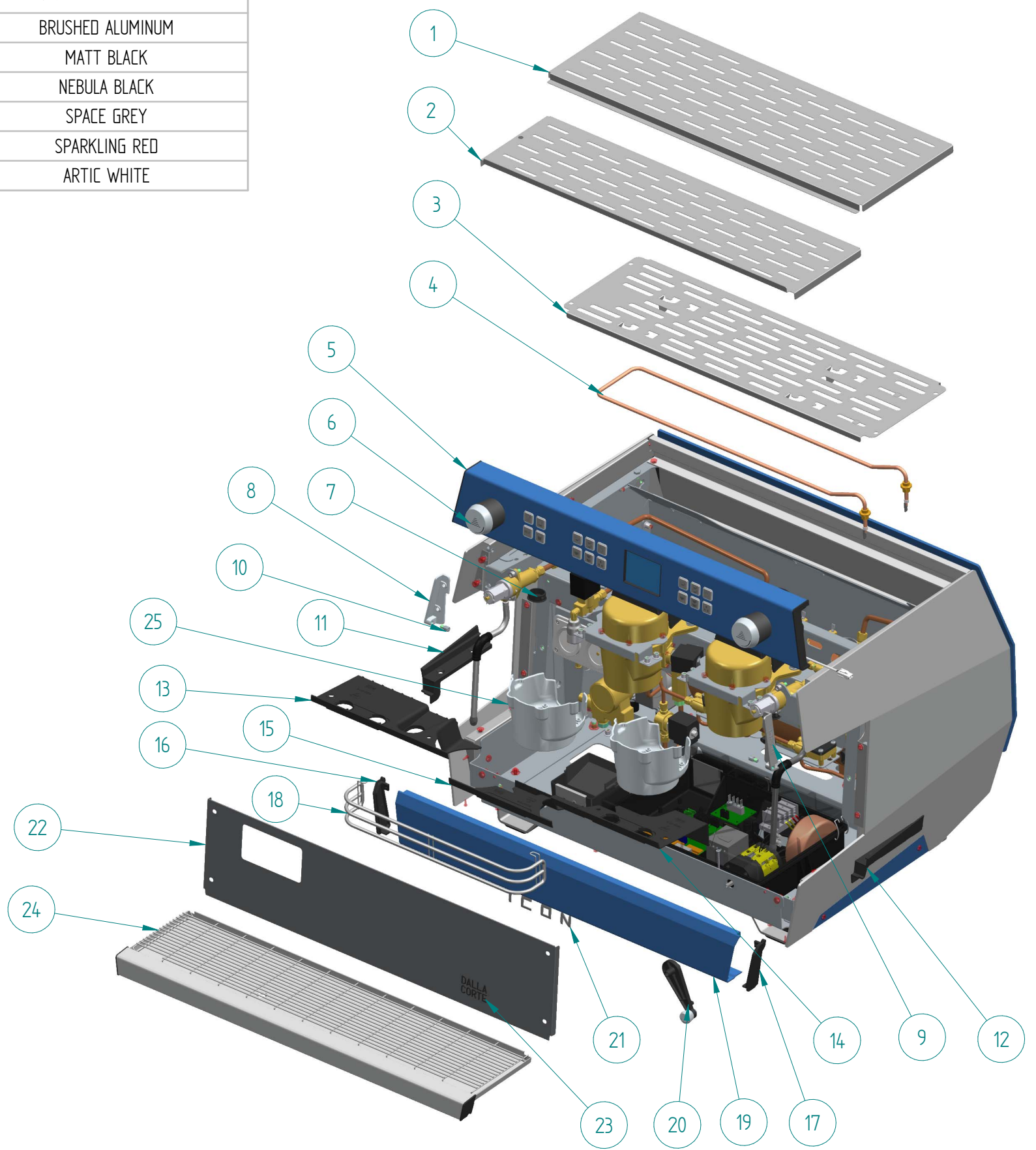
COLOR CODE ( ex. A-MC-5300-MB )	
AS	BRUSHED ALUMINUM
MB	MATT BLACK
N	NEBULA BLACK
SG	SPACE GREY
SR	SPARKLING RED
W	ARTIC WHITE



ITEM	CODE	DESCRIPTION	NOTE
	A-MC-5202	BUTTON PANEL ASSY 2GR 2MCS	
	A-MC-5203*	BUTTON PANEL ASSY 3GR 2MCS	
1	B-MC-5367	SHEETM. CONTROLS SUPPORT 2GR	
1 a	B-MC-5368*	SHEETM. CONTROLS SUPPORT 3GR	
2	A-MC-5207	BUTTON PANEL ICON	
3	A-MC-5201	GROUP BUTTON PANEL 6T ICON	
4	B-MC-5206	BUTTON PANEL SPACER	
5	B-00-0261	SCREW TC+ A2 M3x12 DIN7985	
6	B-00-0365	SELF-TAPPING SC. TC+ 2.2x4,5	
7	B-MC-5205	COVER PCB DISPLAY	
8	B-MC-1513	TOUCH DISPLAY	
9	B-00-0192	SCREW TC+ A2 M3x16 DIN7985	
10	A-MC-5208	BUTTON PANEL MCS RT ICON	



COLOR CODE ( ex. A-MC-5306-MB )	
AS	BRUSHED ALUMINUM
MB	MATT BLACK
N	NEBULA BLACK
SG	SPACE GREY
SR	SPARKLING RED
W	ARTIC WHITE



ITEM	CODE	DESCRIPTION	NOTE
1	B-MC-0560	2G REAR TOP GRID	
1 a	B-MC-0561*	3G REAR TOP GRID	
2	B-MC-0563	2G FRONT TOP GRID	
2 a	B-MC-0564*	3G FRONT TOP GRID	
3	B-MC-0566	2G CUP WARMER PLATE	
3 a	B-MC-0567*	3G CUP WARMER PLATE	
4	B-MC-0030	2GR CUP WARMER RESISTANCE 100W	
4 a	B-MC-0184*	3GR CUP WARMER RESISTANCE 150W	
5	A-MC-5306 ...	COMPLETE UPPER FRONT 2GR	SEE DETAIL SHEET 16
5 a	A-MC-5307* ...	COMPLETE UPPER FRONT 3GR	SEE DETAIL SHEET 16
5 b	A-MC-5300* ...	COMPLETE UPPER FRONT 2GR 2MCS	SEE DETAIL SHEET 18
5 c	A-MC-5301* ...	COMPLETE UPPER FRONT 3GR 2MCS	SEE DETAIL SHEET 18
6	A-MC-5309	COMPLETE STEAM KNOB	
7	B-00-0485	PLUG 27,8 BLACK	
8	B-MC-5362	FRONT PANEL LOCK GUIDE SX	
9	B-MC-5363	FRONT PANEL LOCK GUIDE DX	
10	B-MC-1007	FRONT SUPPORT PIN	
11	B-MC-5350	LEFT WATER TRAY SUPPORT	
12	B-MC-5351	RIGHT WATER TRAY SUPPORT	
13	B-MC-5334	LOWER LEFT CARTER	
14	B-MC-5335	RIGHT LOWER CARTER	
15	B-MC-5336	CENTRAL LOWER CARTER	
16	B-MC-5303	FRONT LOW EXTR PROFILE SX	
17	B-MC-5304	FRONT LOW EXTR PROFILE DX	
18	B-MC-5370	GROUPS PROTECTION 2GR	
18 a	B-MC-5371*	GROUPS PROTECTION 3GR	
19	B-MC-5300 ...	LOWER FRONT PANEL 2GR	TO COMPLETE WITH COLOR CODE
19 a	B-MC-5301* ...	LOWER FRONT PANEL 3GR	TO COMPLETE WITH COLOR CODE
20	A-MC-5308	ASSEMBLED SWITCH LEVER	
21	B-MC-5353	ICON LOGO 125x20 TITANIUM ADHESIVE	
22	B-MC-5330	FRONT PANEL 2GR	
22 a	B-MC-5331*	FRONT PANEL 3GR	
23	B-MC-5354	DALLA CORTE LOGO 52x30 BLACK	
24	A-MC-5303	ASSEMBLY TRAY 2GR	NOT ORDINABLE / SEE DETAIL SHEET 22
24 a	A-MC-5304*	ASSEMBLY TRAY 3GR	NOT ORDINABLE / SEE DETAIL SHEET 22
25	B-MC-0668	GROUP BODY COVER	

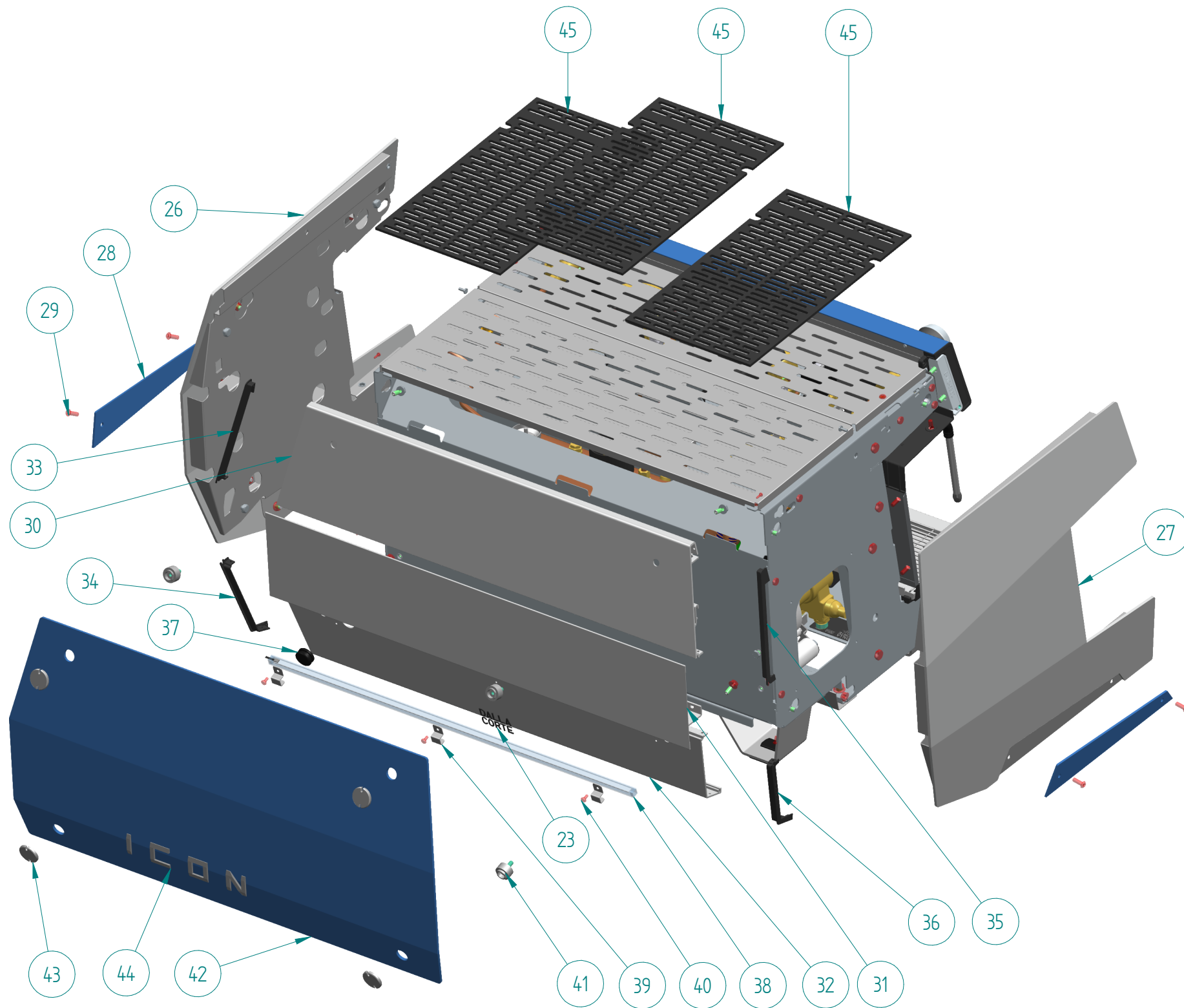
**DALLA CORTE**  
SPARE PARTS CATALOGUE  
ICON

DESCRIPTION	FRONTAL BODY
ASSEMBLY CODE	

REV	02
EMISSION DATE	NOVEMBER 2022

NOTE:  
\* ALTERNATIVE TO THE REPRESENTED COMPONENT  
\*\* COMPONENT NOT SHOWN

DALLA CORTE SRL reserves by law the property of the drawing, prohibiting its reproduction or disclosure to third parties or competitors without prior written advice.

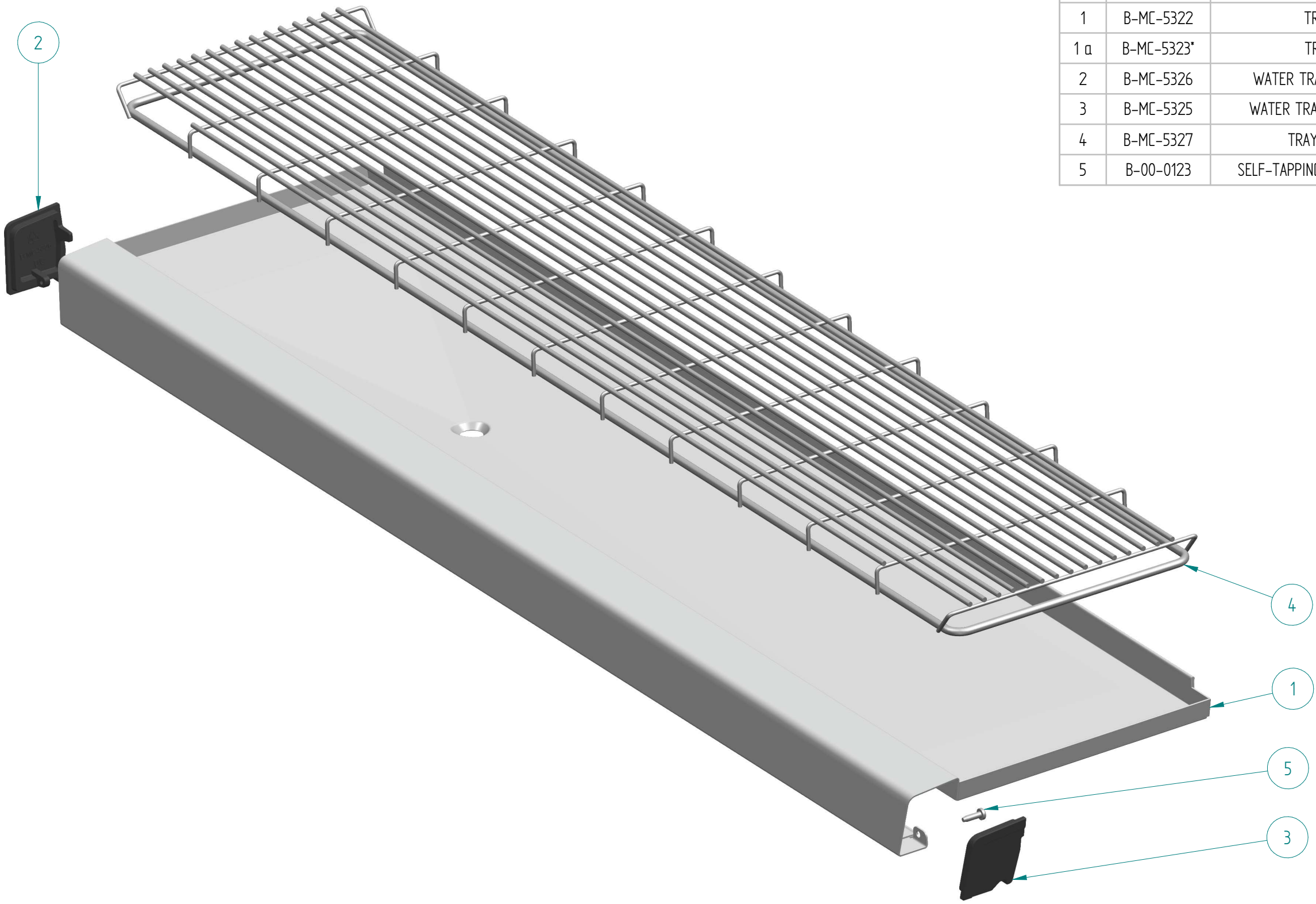


ITEM	CODE	DESCRIPTION	NOTE
26	A-MC-5302 ...	RAW COMPLETE RH SIDE	NOT ORDINABLE / TO COMPLETE WITH COLOR CODE
27	A-MC-5305 ...	RAW COMPLETE LH SIDE	NOT ORDINABLE / TO COMPLETE WITH COLOR CODE
28	B-MC-5345 ...	SIDE INSERT	TO COMPLETE WITH COLOR CODE
29	B-00-0106	SCREW TBCE M6x16 INOX GLOSSY	
30	B-MC-5306 ...	UPPER REAR PANEL 2GR	TO COMPLETE WITH COLOR CODE
30 a	B-MC-5307* ...	UPPER REAR PANEL 3GR	TO COMPLETE WITH COLOR CODE
31	B-MC-5309	CENTRAL REAR PANEL 2GR	
31 a	B-MC-5310*	CENTRAL REAR PANEL 3GR	
32	B-MC-5312 ...	LOWER REAR PANEL 2GR	TO COMPLETE WITH COLOR CODE
32 a	B-MC-5313* ...	LOWER REAR PANEL 3GR	TO COMPLETE WITH COLOR CODE
33	B-MC-5374	REAR UP RH EXTR PROFILE	
34	B-MC-5376	REAR LOW RH EXTR PROFILE	
35	B-MC-5373	REAR UP LH EXTR PROFILE	
36	B-MC-5375	REAR LOW LH EXTR PROFILE	
37	B-MC-0195	GROMMET BLIND DP14 HBNR	
38	A-MC-0529	COMPLETE LED BAR L600	
38 a	A-MC-0530*	COMPLETE LED BAR L820	
39	B-MC-5402	LED BAR CLAMP	
40	B-00-0102	SCREW TE 8.8 M4x8 DIN933	
41	B-MC-5401	REAR PANEL SPACER	
42	B-MC-5319 ...	REAR PANEL 2GR	TO COMPLETE WITH COLOR CODE
42 a	B-MC-5320* ...	REAR PANEL 3GR	TO COMPLETE WITH COLOR CODE
43	B-MC-2048A	PANEL FIXING KNOB	
44	B-MC-5352	ICON LOGO 200x32 TITANIUM	
45	B-MC-0717	CUP GRID SECTION	

COLOR CODE ( ex. A-MC-5302-MB )	
AS	BRUSHED ALUMINUM
MB	MATT BLACK
N	NEBULA BLACK
SG	SPACE GREY
SR	SPARKLING RED
W	ARTIC WHITE



ITEM	CODE	DESCRIPTION	NOTE
	A-MC-5303	ASSEMBLY TRAY 2GR	NOT ORDINABLE
	A-MC-5304*	ASSEMBLY TRAY 3GR	NOT ORDINABLE
1	B-MC-5322	TRAY 2GR	
1 a	B-MC-5323*	TRAY 3GR	
2	B-MC-5326	WATER TRAY PROFILE LEFT	
3	B-MC-5325	WATER TRAY PROFILE RIGHT	
4	B-MC-5327	TRAY GRID 2GR	
5	B-00-0123	SELF-TAPPING SC. TC+ 2,9 x 9,5	



**DALLA CORTE**  
SPARE PARTS CATALOGUE  
ICON

DESCRIPTION  
COMPLETE TRAY

ASSEMBLY CODE  
A-MC-5303 / A-MC-5304

REV  
02

EMISSION DATE  
NOVEMBER 2022

NOTE:  
\* ALTERNATIVE TO THE REPRESENTED COMPONENT  
\*\* COMPONENT NOT SHOWN

SHEET  
22



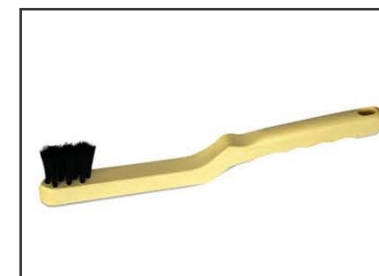
**A-MC-1046A**  
PORTAFILTER WHIT THERMOCOUPLE



**B-MC-0404**  
GROUP CLEANING TABLETS



**B-00-0045**  
BLACK SPIRAL DRAIN PIPE (M)



**B-MC-0194**  
SHOWER BRUSH



**B-00-0029**  
FLEX PIPE 3/8" L70



**B-MC-0225**  
KEY FOR SHOWER  
D54 SCREW



**B-00-0030**  
FLEX PIPE 3/8"  
L150+90° COUPLING



**B-00-0382**  
ANGLED HEXAGON KEY 4 mm





**1-PC-083**

TAMPING MAT



**B-MC-0478A**

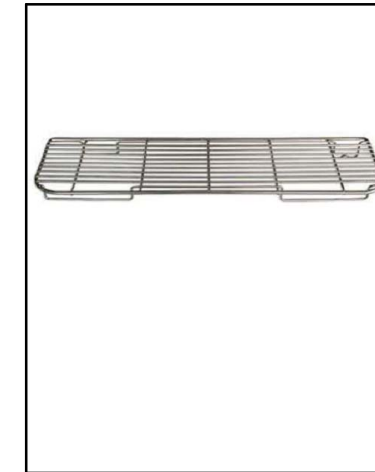
INOX + AL TAMPER D 54.5

**B-MC-0478A-0**

INOX + OAK TAMPER D 54.5

**B-MC-0478A-WN**

INOX + WN TAMPER D 54.5



**B-MC-1173**

2G TRAY GRID RAISE

**B-MC-1174**

3G TRAY GRID RAISE



**A-PC-0001**

COFFEE CALIBER



**A-MC-2015**

KEY LOCKING HUBCUP



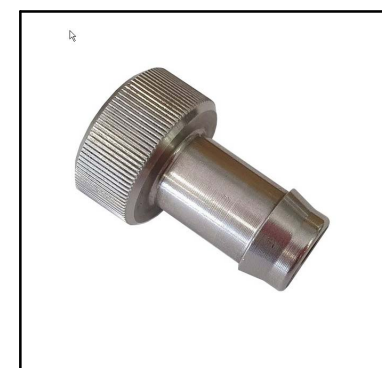
**A-PC-0019**

D54 SHOWER REMOVER



**A-PC-0002**

INOX + AL TAMPER D58



**B-PC-0019**

BOILER WASH FITTING



**K-MC-5013**

SPARE PARTS KIT

**K-MC-5016**

SPARE PARTS KIT EXTENSION