



KODIAK20



Gyldig fra maskinnummer:
Valid from machine number:
Gültig ab Maschinenummer:

20019000

Reservedelsmanual Spare part manual Ersatzteilmanual



Version	Maskinr. / Machine no.	Del / Part	Side / Page

Varimixer

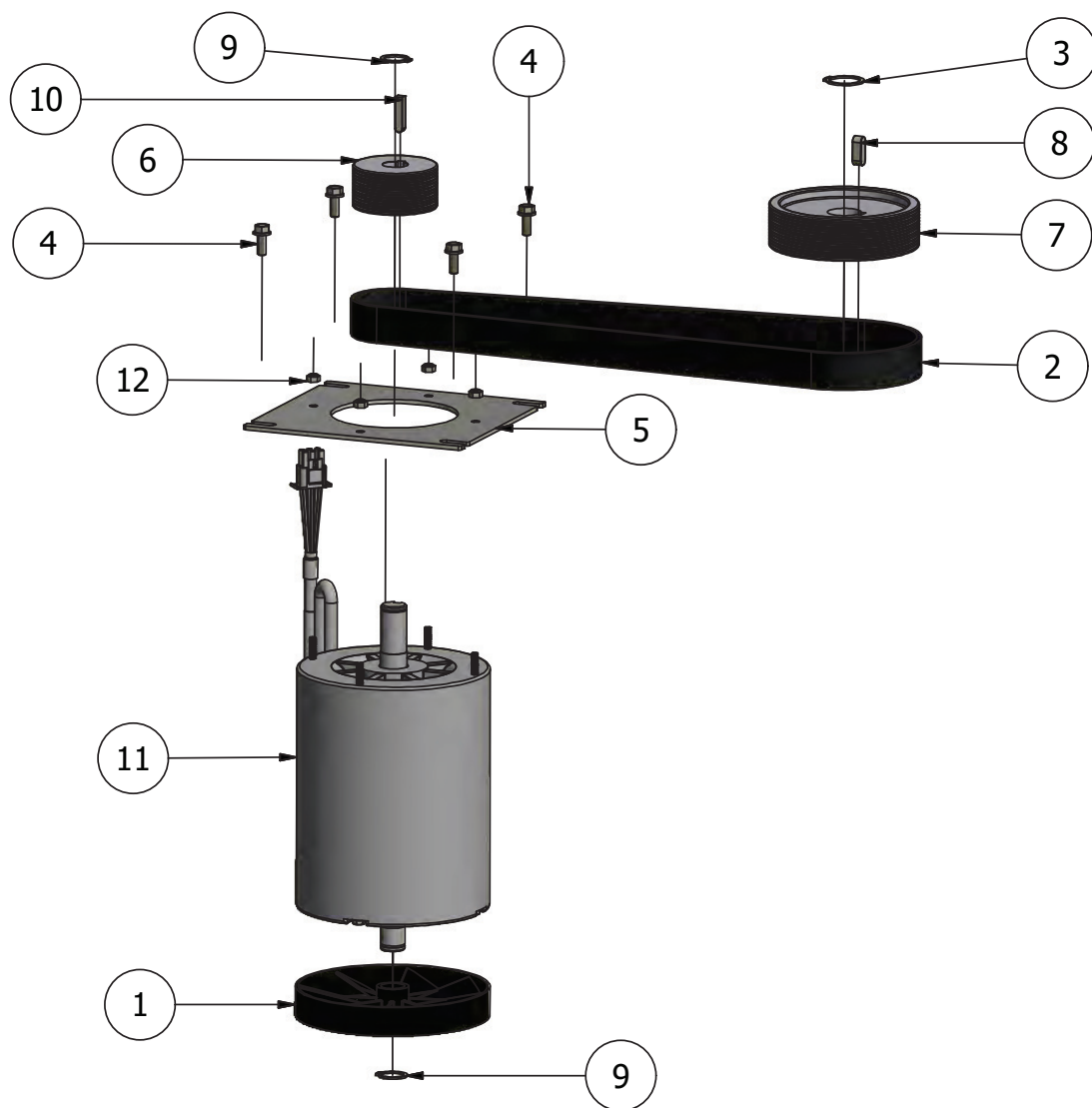
DK EN

Varimixer A/S
Kirkebjerg Søpark 6
DK-2605 Brøndby
Denmark

P: +45 4344 2288
E: info@varimixer.com
www.varimixer.com

Ordrenummer: 00271
April 2019

TRANSMISSION.....	TRANSMISSION.....	3
LØFTESYSTEM.....	LIFTING SYSTEM	4
RØREHOVED	PLANETARY HEAD	6
HJÆLPETRÆK	ATTACHMENT DRIVE.....	8
STATIV - GULV	MACHINE COLUMN - FLOOR.....	10
STATIV - BORD	MACHINE COLUMN - TABLE.....	12
OMFORMERBOKS	INVERTER-BOX	14
FRONTPANEL	FRONT PANEL.....	15
KABLER	CABLES	16
VÆRKTØJ	ACCESSORIES	17
ELDIAGRAM	ELECTRICAL DIAGRAM	18

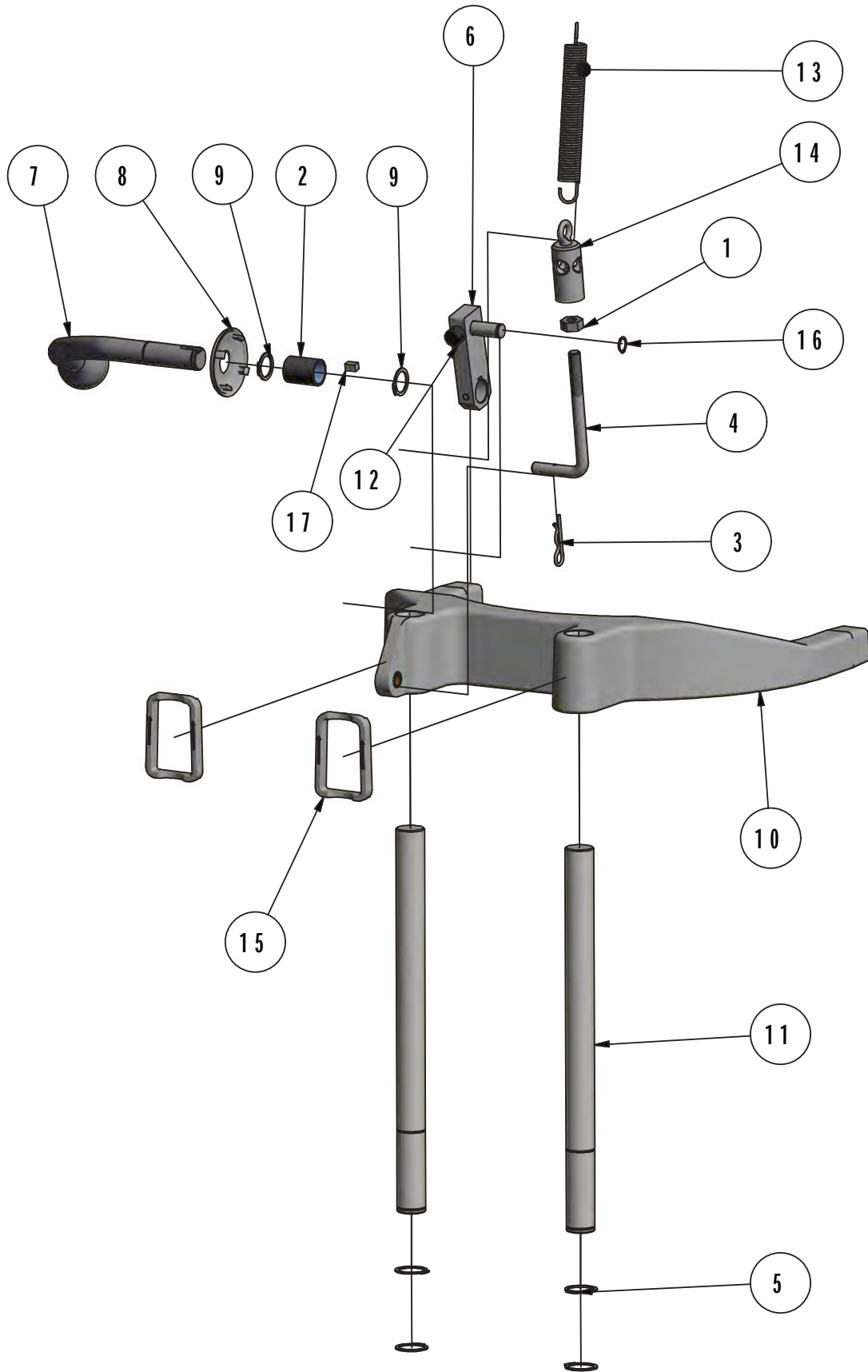


ITEM	Part number	Name	Name UK
1	RN20-87.1	Ventilator 1,2kw Headline motor	Fan 1,2kw headline motor
2	CR30-90	Micro-V PJ1016-12	Micro-V PJ1016-12
3	STA3410	Seegerring A25	Circlip A25
4	STA5750	Sekskantskrue med flange M6x16	Hex cap screw M6x16
5	CR20-61.3	Motor plade	Mounting plate motor
6	CR20-128	Poly-v remskive $\varnothing 63$ J12	Pulley $\varnothing 63$ J12
7	CR20-129	Poly-v remskive $\varnothing 112$ J12	Pulley $\varnothing 112$ J12
8	STA2037	Pasfeder A 8x7x22mm Din6885A	Pasfeder A 8x7x22mm Din6885A
9	STA3407	Seegerring A19	Circlip A19
10	STA2004	Pasfeder AB 6x6x27mm Din6885A	Pasfeder AB 6x6x27mm Din6885A
11	CR20-85	Motor 1 faset 0,7kw	Motor 1 fase 0,7kw
12	STA5897	Flange m \varnothing trik M5	Flange Nut M5

LØFTESYSTEM

LIFTING SYSTEM

ITEM	Part number	Navn DK	Name UK	Sælges som / Sold as
1	STA5806	Møtrik M10 DIN125A A2	Hexagon nut M10 DIN125A A2	
2	STA2515	Lejebøsning MB2030-NB1	Bearing MB2030-NB1	
3	STA6205	Fjersersplit ø2,5	Spring cotters for bolt ø2,5	
4	CR30-83.1	Løfte bolt	Lifting bolt	
5	STA3410	Seegerring A25	Circlip A25	
6	CR30-63M	Krumtap arm monteret	Crankshaft	
7	CR20-62M	Løftehåndtag samlet	Lifting arm	
8	CR30-62.9	Dækprop for løftearm	Cover for liftarm	
9	STA3408	Seegerring A20	Retainingring A20	
10	CR20-23M	Bøjle monteret med tappe/leje	Bowl arm mounted with pins/ bushing	
11	CR20-68.5	Bøjleaksel	Shaft	
12	CR30-63.3	Dæmperprop	Absorber plug	
13	CR20-110	Trækfjeder Kedelløft	Spring bowlift	
14	CR30-65.1M	Løftebolt monteret	Liftingnut mounted	
15	CR20-23.5	NSF Pakning	NSF Gasket	
16	STA3403	Seegerring A12	Circlip A12	
17	STA2019	Pasfeder 6x6x10	Feather Key 6x6x10	

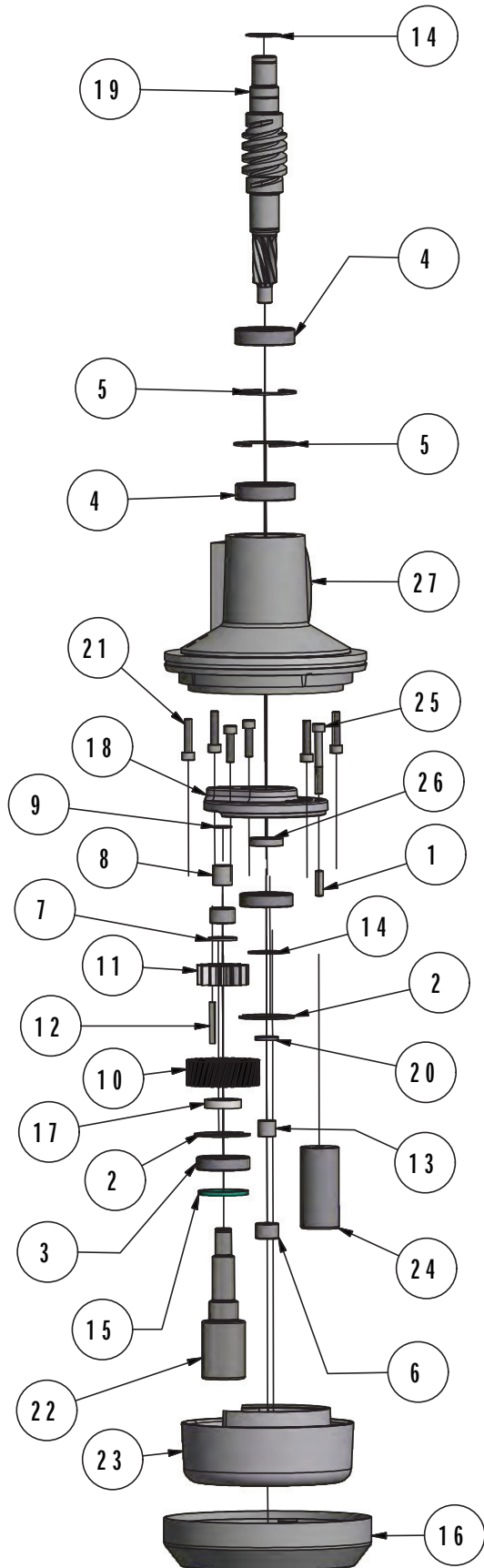


RØREHOVED

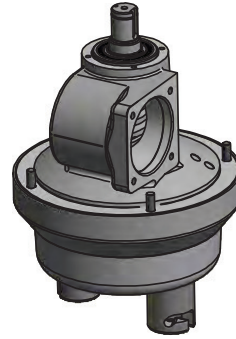
PLANETARY HEAD

ITEM	Part number	Na	Name UK	Sælges som / Sold as
1	STA6460	Stift ø8x24-KS4	Dowel pin ø8x24-KS4	
2	STA3515	Seegerring J55	Retainningring J55	
3	6006 2RS	Sporkugleleje 6006 2RS ø30-ø55x13	Ballring 6006	
4	6206 2RS	Sporkugleleje 6206 2RS ø30-ø62x16	Ballring 6206	
5	STA3518	Seegerring J62	Retainningring J62	
6	BK1816	Nåleleje ø18-ø2x16	Needle bearing	
7	R20-235	Aksialskeive LS1735	Axial washer	
8	LR17	Bøsning LR17x20x20,5	Bushing	
9	STA3470	Springring SW17	Circlip SW17	
10	R20-32	Mellemhjul 1	Toothwheel 1	
11	R20-31	Mellemhjul	Toothwheel	
12	STA2008	Pasfeder 5x5x43	Shaft key	
13	LR15	Bøsning LR15x18x16,5	Bushing	
14	STA3414	Seegerring A30	Circlip A30	
15	CR30-108R	Tætningsring G45x52x4	Sealingring G45x52x4	
16	RN20-272.1	Svøb 20L	Shell 20L	
17	CR30-34	Afstandsring	Distance ring	
18	CR30-36	Eksentrisk skive - bearbejdet	Exentric disc - machined	
19	CR30-30.5	Hovedaksel med snekke	Mainshaft	
20	RN20-108R	Olietætningsring G18x24x3mm	Shaft gasket	
21	STA5638	Cylinder skrue M8x35	Socket head screw M8x35	
22	CR20-33.6	20L bajonetaksel selvlåsende	20L bayonetshaft selflocking	
23	CR30-2.1	Underhoved for skraber	Lower head	
24	42CR20-105	Bajonet for skraber	bajonetshaft scraber	
25	STA5729	Cylinder skrue M8x65	Socket head screw M8x65	
26	CR30-37	Afstandsør f. CR30	Distance ring for CR30	
27	CR20-1	Overdel rørehoved - bearbejdet	Planetary gear - machined	
27	CR20-1.1	Overdel rørehoved for hjælpetræk - bearbejdet	Planetary gear attachment drive - machined	

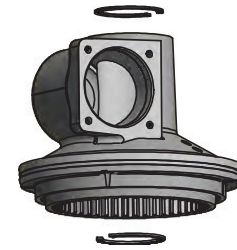
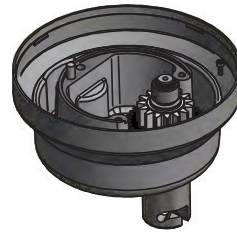
CR20-2Z	Rørehoved CR20L	Planetary head CR20
CR20-2.1Z	Rørehoved CR20L med skraber	Planetary head CR20 scraper
CR20-2.2Z	Rørehoved CR20L med hjælpetræk	Planetary head CR20 attachment drive
CR20-2.3Z	Rørehoved CR20L med skraber+hjælpetræk	Planetary head CR20 scraper+attachment drive
CR20-2.10Z	Eksentrisk hoved monteret	Exentric head mounted
CR20-2.11Z	Eksentrisk hoved for skraber monteret	Exentric head for scraper mounted
CR30-36Z	Eksentrisk skive monteret	Exentric disc mounted
RN20-101Z	Nåleleje komplet	Needle bearing complete
42CR20-105Z	Bajonet for skraber komp.	Bajonetshaft for scraper complete
CR30-30.6Z	Hovedaksel komp. ikke for hjælpetræk	Main shaft standard complete
CR30-30.6Z	Hovedaksel komp. for hjælpetræk	Main shaft f. attachment drive complete
CR20-33.6Z	Bajonetaksel selvlåsende 20L komplet	Bajonetshaft 20L complete



CR 20-2Z
 CR 20-2.1Z
 CR 20-2.2Z
 CR 20-2.3Z

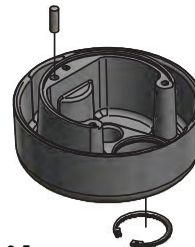


CR 20-2.10Z
 CR 20-2.11Z



CR 20-1Z
 CR 20-1.1Z

CR 30-2Z
 CR 30-2.1Z



CR 30-36Z

RN 20-101Z



42 CR 20-105Z



CR 30-30.6Z

CR 30-30.5Z

CR 20-33.6Z

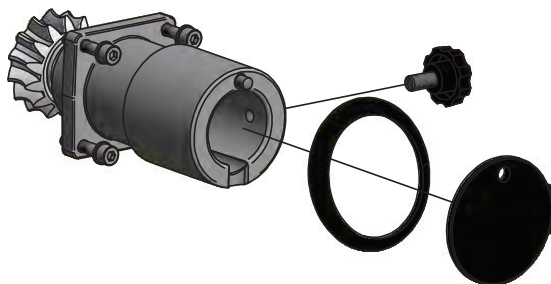
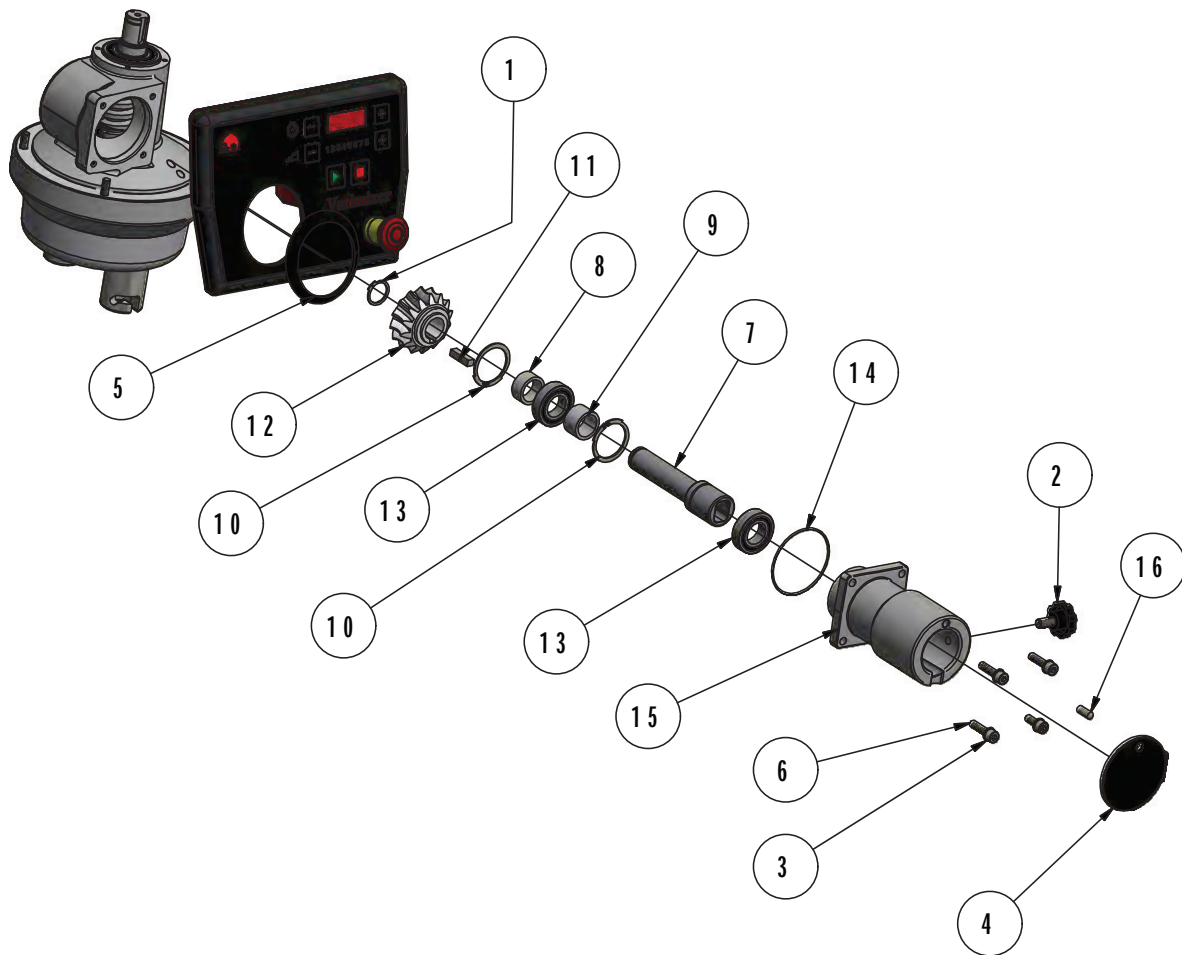


HJÆLPETRÆK

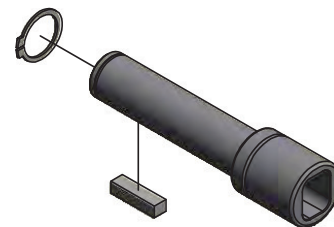
ATTACHMENT DRIVE

ITEM	Part number	Name	Name UK	Sælges som / Sold as
1	STA3410	Seegerring A25	Circlip A25	
2	STA5561	M10 Fingerskrue	M10 Handscrew	
3	STA6038	Center fjederSkive ø8	Spring lock washer ø8	
4	R15-215	Blinddæksel	Blindcover	
5	CR30-211	Hjælpetrækspakning	Attachment drive collar	
6	STA5626	Cylinder skrue M8x30	Socket head screw M8x30	
7	CR30-50.1R	Hjælpetræksaksel CR30	Attachment drive shaft CR30	
8	R100-143	Afstandsør	Spacer	
9	RN20-37	afstandsøsnings	Distance bushing	
10	STA3512	Sikringsring J 47x1.75	Circlips Type J 47x1,75	
11	STA2031	Pasfeder 8x7x30	Feather Key 8x7x30	
12	RN20-9	Snekkehjul	Worm wheel	
13	6005 2RS	Sporkugleleje 6005 2RS ø25-ø47x12	Ballring 6005 2RS	
14	STA3127	O-ring ø66x2	O-ring ø66x2	
15	CR20-8.2	Lejehus hjælpetræk bearbejdet	Bearing house attachment drive	
16	STA6248	Cylinder stift ø8m6x20 A4	Dowel Pin ø8m6x20 A4	

CR20-10Z	Hjælpetræk CR20 komplet	Attachment drive complete
CR30-50.1Z	Hjælpetræksaksel	Attachment drive shaft

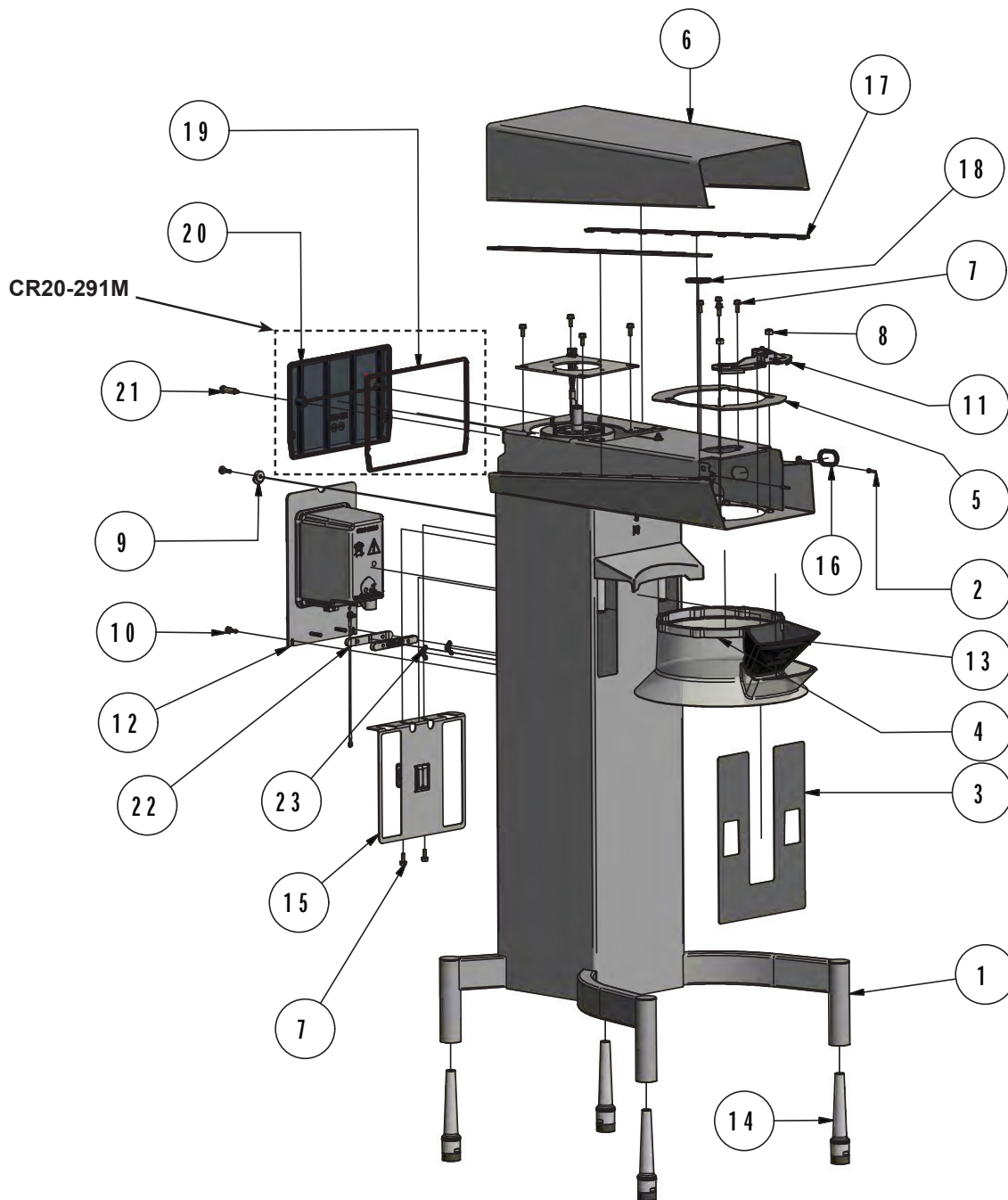




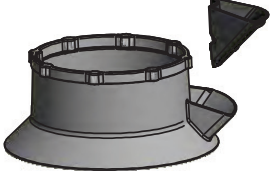
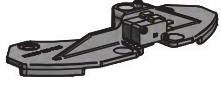
CR20-10Z



CR30-50.1Z

ITEM	Part number	Name	Name UK	Sælges som / Sold as
1	CR20-22R	Stativ svejst	Machine frame welded	
2	STA5707	Cylinder skrue M4x16	Socket head screw M4x16	
3	CR30-304	NSF plade	NSF Cover plate	
4	56CR20P-22	Plast skærm 20L	Plastic cover 20L	
5	56CR30-109	Microswitch ring	Micro switch ring	
6	CR20-21R	Låg	Top cover	
7	STA5750	Sekskantskrue med flange M6x16	Hex cap screw M6x16	
8	STA5842	Låsemøtrik M8	Hexagon locknut M8	
9	CR30-22.18	Vrider	Wring	
10	STA5028	M6x20 Captive marineskrue	M6 Captive marine screw	
11	56CR20-110M	Switchbeslag komplet	Switch bracket complete	
12	CR20-552.4M	Bagkasse frekvensomformer monteret	Back box converter complete	
13	56CR20-280	Indfyldningstragt	Filling tray	
14	CR20-218	Justerbart ben	Adjustable leg	
14a	CR20-218R	Justerbart ben MARINE	Adjustable leg MARINE	
15	56CR20-111M	Switch kedeldetektering med beslag CR20/CR30	Switch bowl detection with bracket CR20/CR30	
16	STA3175	Gennemføringstykke oval	Grommet ovale	
17	CR20-551	Pakning låg	Gasket top cover	
18	STA3175.1	Gennemføringstykke oval	Grommet ovale	
19	CR20-291.22	Pakning bag panel	Gasket back panel	
20	CR20-291	Bagpanel	Back panel	CR20-291M
21	STA9008	M6 o-ring Marineskrue	M6 o-ring Marine screw	
22	CR30-602	Skærm beslag	Shield bracket	
23	STA5803	Vingemøtrik M6	Wing nut M6	

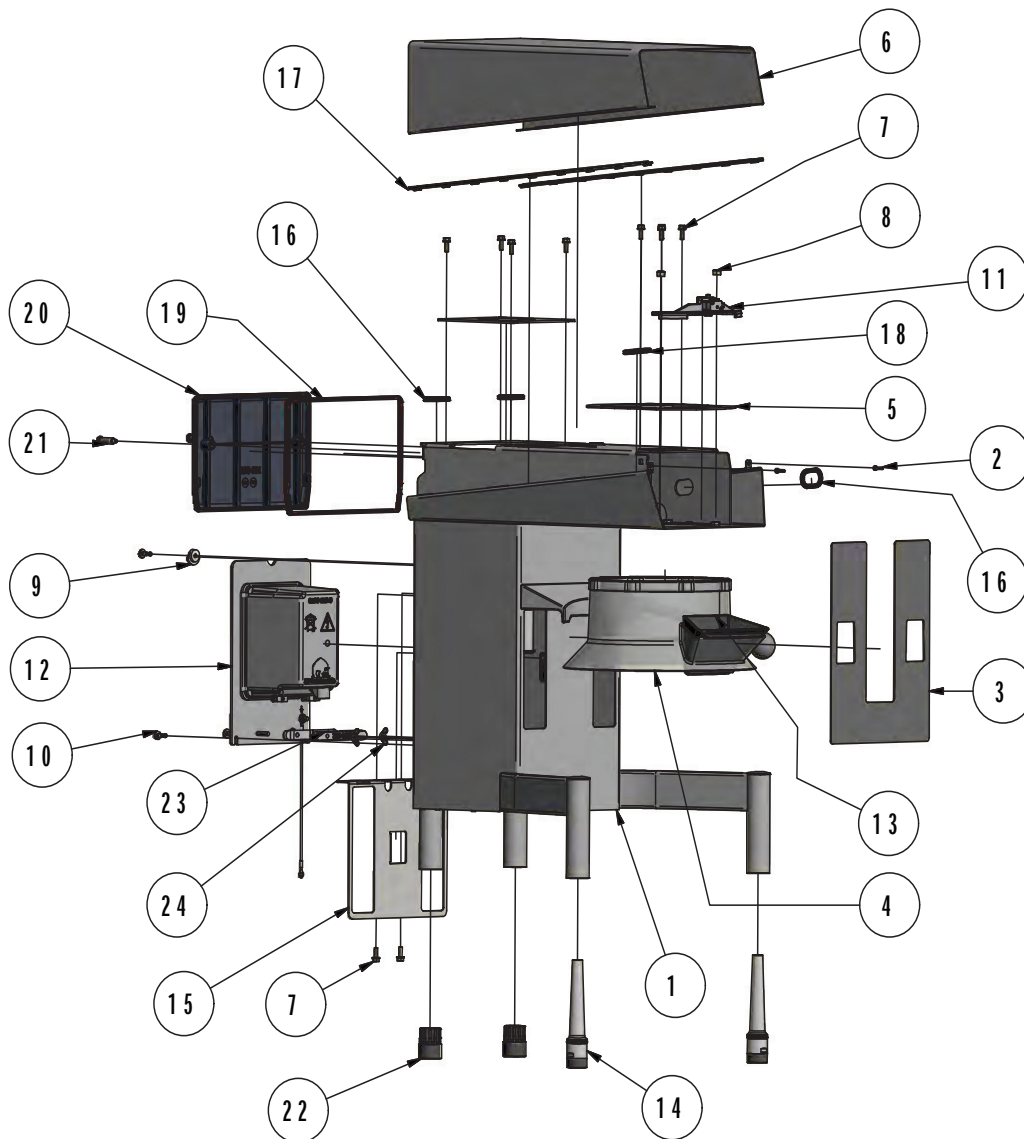


 <p>CR20-218R</p>	 <p>56CR20-111M</p>	 <p>56CR20P-22 56CR20-280</p>	 <p>56CR20-110M</p>
--	--	---	--

STATIV - bord

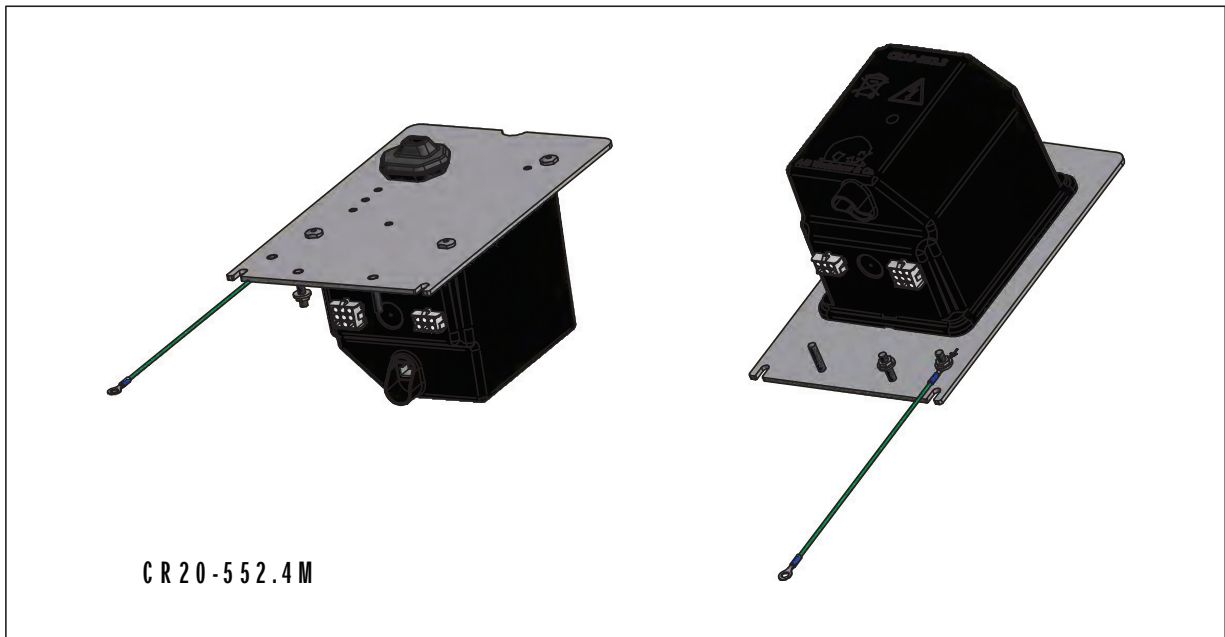
MACHINE COLUMN - table

ITEM	Part number	Navn DK	Name UK	Sælges som / Sold as
1	CR20B-22R	Stativ svejst	Machine frame welded	
2	STA5707	Cylinder skrue M4x16	Socket head screw M4x16	
3	CR30-304	NSF plade	NSF Cover plate	
4	56CR20P-22	Plast skærm 20L	Plastic cover 20L	
5	56CR30-109	Microswitch ring	Micro switch ring	
6	CR20-21R	Låg	Top cover	
7	STA5750	Sekskantskrue med flange M6x16	Hex cap screw M6x16	
8	STA5842	Låsemøtrik M8	Hexagon locknut M8	
9	CR30-22.18	Vrider	Wring	
10	STA5028	M6x20 Captive marineskrue	M6 Captive marine screw	
11	56CR20-110M	Switchbeslag komplet	Switch bracket complete	
12	CR20-552.4M	Bagkasse frekvensomformer monteret	Backbox converter complete	
13	56CR20-280	Indfyldningstragt	Filling tray	
14	CR20-218	Justerbart ben	Adjustable leg	
14a	CR20-218R	Justerbart ben MARINE	Adjustable leg MARINE	
15	56CR20-111M	Switch kedeldetektering med beslag CR20/CR30	Switch bowl detection with bracket CR20/CR30	
16	STA3175	Gennemføringstykke oval	Grommet ovale	
17	CR20-551	Pakning låg	Gasket top cover	
18	STA3175.1	Gennemføringstykke oval	Grommet ovale	
19	CR20-291.22	Pakning bag panel	Gasket back panel	
20	CR20-291	Bagpanel	Backpanel	
21	STA9008	M6 o-ring Marineskrue	M6 o-ring Marine screw	
22	CR20-218.1	Gummifod bordmodel	Rubber foot table model	
23	CR30-602	Skærm beslag	Shield bracket	
24	STA5803	Vingemøtrik M6	Wingnut M6	



 <p>CR20-218R</p>	 <p>56CR20-111M</p>	 <p>56CR20-110M</p>	 <p>56CR20P-22 56CR20-280</p>
--	--	---	--

Part number	Navn DK	Name UK
CR20-552.4M	Bagkasse frekvensomformer CR20 monteret	Frequency converter CR20 mounted



Part number	Navn DK	Name UK
CR10-174.35M	Nødstop	Emergency stop
CR20-501M	Frontpanel monteret	Frontpanel mounted
CR20-501.1M	Frontpanel hjælpetræk monteret	Frontpanel attachment drive mounted



CR10-174.35M



CR20-501M



CR20-501.1M

KABLER

CABLES

Part number	Navn DK	Name UK
CR20-194.5M	Jordkabel kort CR20	Earth cable short CR20
CR20-194.6M	Jordkabel lang CR20	Earth cable long CR20
CR30-194.7M	Jordkabel med Ringkabelsko M6	Earth cable with ringterminal M6
CR20-194.25M	Forsyningskabel til kontaktor	Cable for contactor
CR20-194.26M	Mellemkabel sikkerhedskreds input	Cable security input
CR20-194.27M	Kabel for frekvensomformer til styring	Cable for frequency converter to front
CR20-542	Hovedkredskabel	Main cable
CR20-543	Sikkerhedskabel hovedkreds CR20	Security cable main cable

Part number	Placering i maskinen	Placement i machine
CR20-194.5M	CR20-552.4M	CR20-552.4M
CR20-194.6M		
CR30-194.7M		
CR20-194.25M	CR20-501M + CR20-501.1M + CR20-501.2M + CR20-501.3M	CR20-501M + CR20-501.1M + CR20-501.2M + CR20-501.3M
CR20-194.26M	CR20-552.4M	CR20-552.4M
CR20-194.27M		
CR20-542	M020	M020
CR20-543		

CR20-194.5M



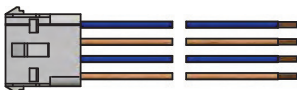
CR20-194.6M



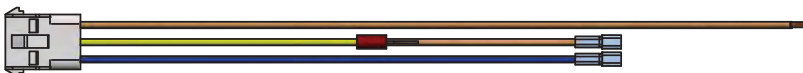
CR30-194.7M



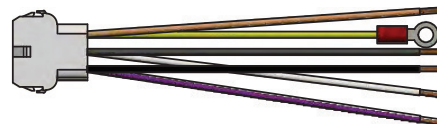
CR20-194.25M



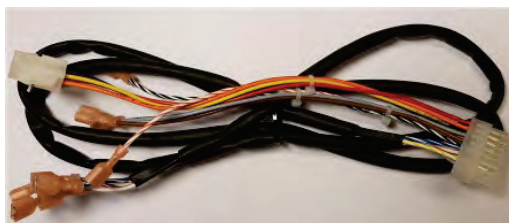
CR20-194.26M



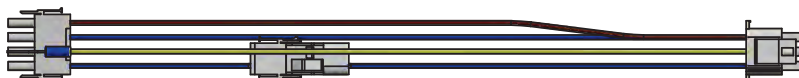
CR20-194.27M



CR20-542

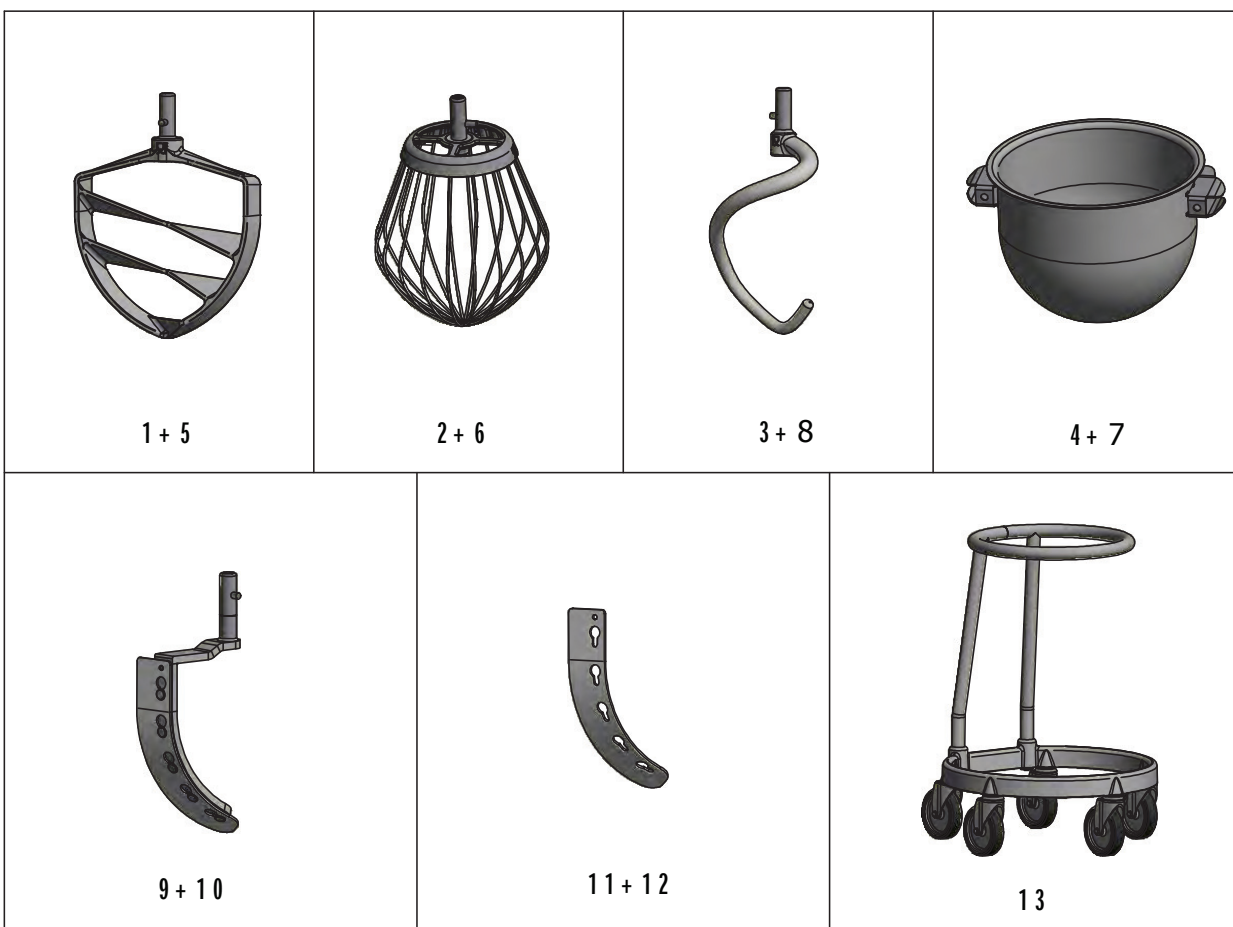


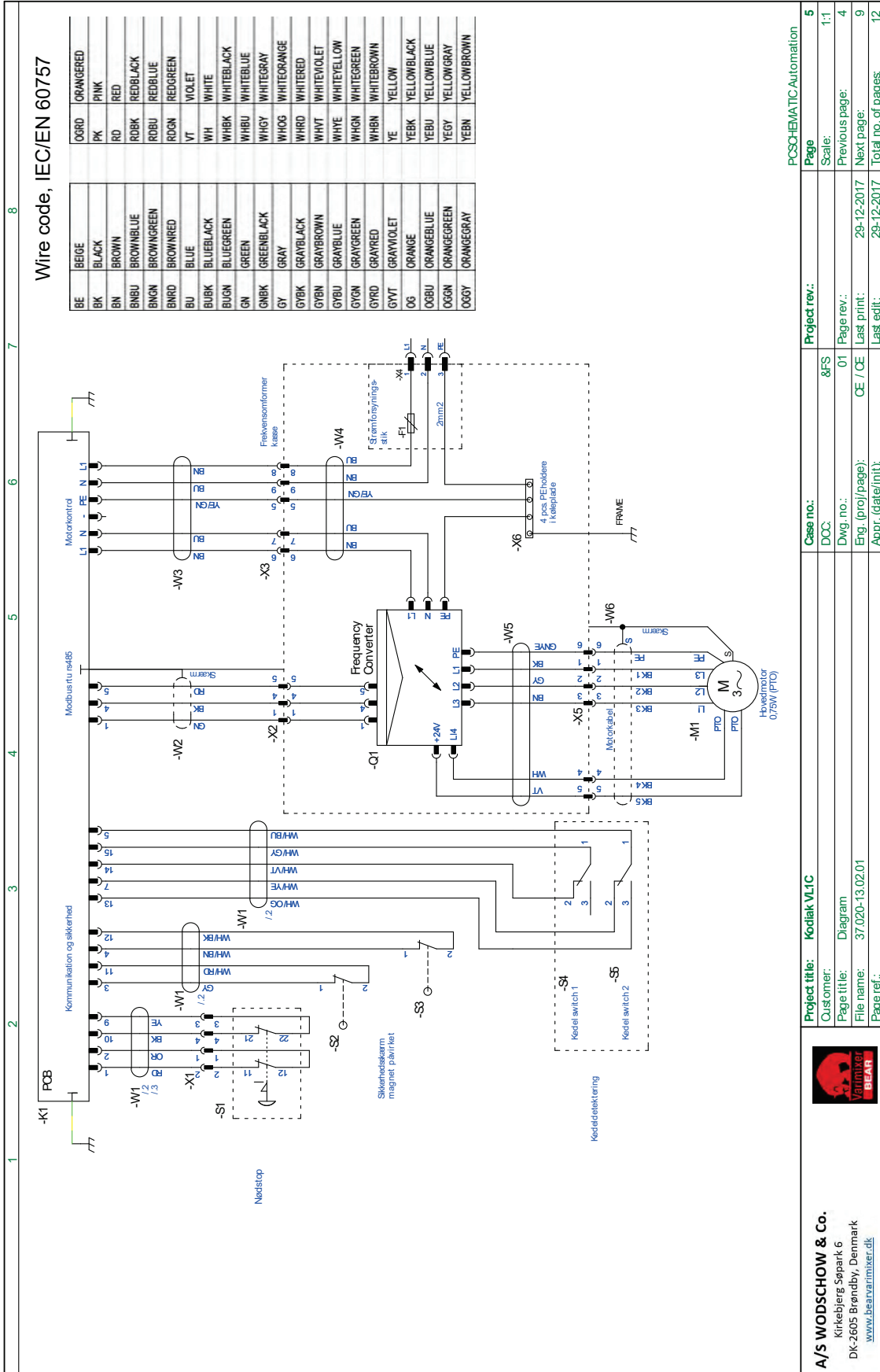
CR20-543



ITEM	Part number	Name	Name UK
1	CR20-27.2M	CR20L Rustfri spartel Komplet	Beater CR20
2	CR20-28M	CR20L Rustfri ris	Whip CR20
3	CR20-78M	CR20 Krog	Hook CR20
4	CR20-75M	CR20L kedel komplet	Bowl CR20
5	CR20-27A2M	20/12L Rustfri spartel komplet	Beater 20/12L
6	CR20-28AM	CR20/12L Rustfri ris	Whip 20/12L
7	CR20-75AM	CR20/12L kedel komplet	Hook 20/12L
8	RN20-78AM	Krog 20/12L	Bowl 20/12L
9	42CR20P	Skraber komplet, nylon	Scraper complete, nylon
9A	42CR20PT	Skraber komplet, teflon	Scraper complete, teflon
10	42CR20AP	Skraber komplet 20/12L, nylon	Scraper complete 20/12L, nylon
10A	42CR20APT	Skraber komplet 20/12L, teflon	Scraper complete 20/12L, teflon
11	42CR20-204	Skraberblad 20L, nylon	Scraper blade 20L, nylon
11A	42CR20-204T	Skraberblad 20L, teflon	Scraper blade 20L, teflon
12	42CR20-204A	Skraberblad 20/12L, nylon	Scraper blade 20/12L, nylon
12A	42CR20-204AT	Skraberblad 20/12L, teflon	Scraper blade 20/12L, teflon
13	22CR20	Kedelvogn komplet	Bowl truck complete

CR20-A	A-udstyr komplet	A-equipment
CR20-B	B-udstyr komplet	B-Equipment





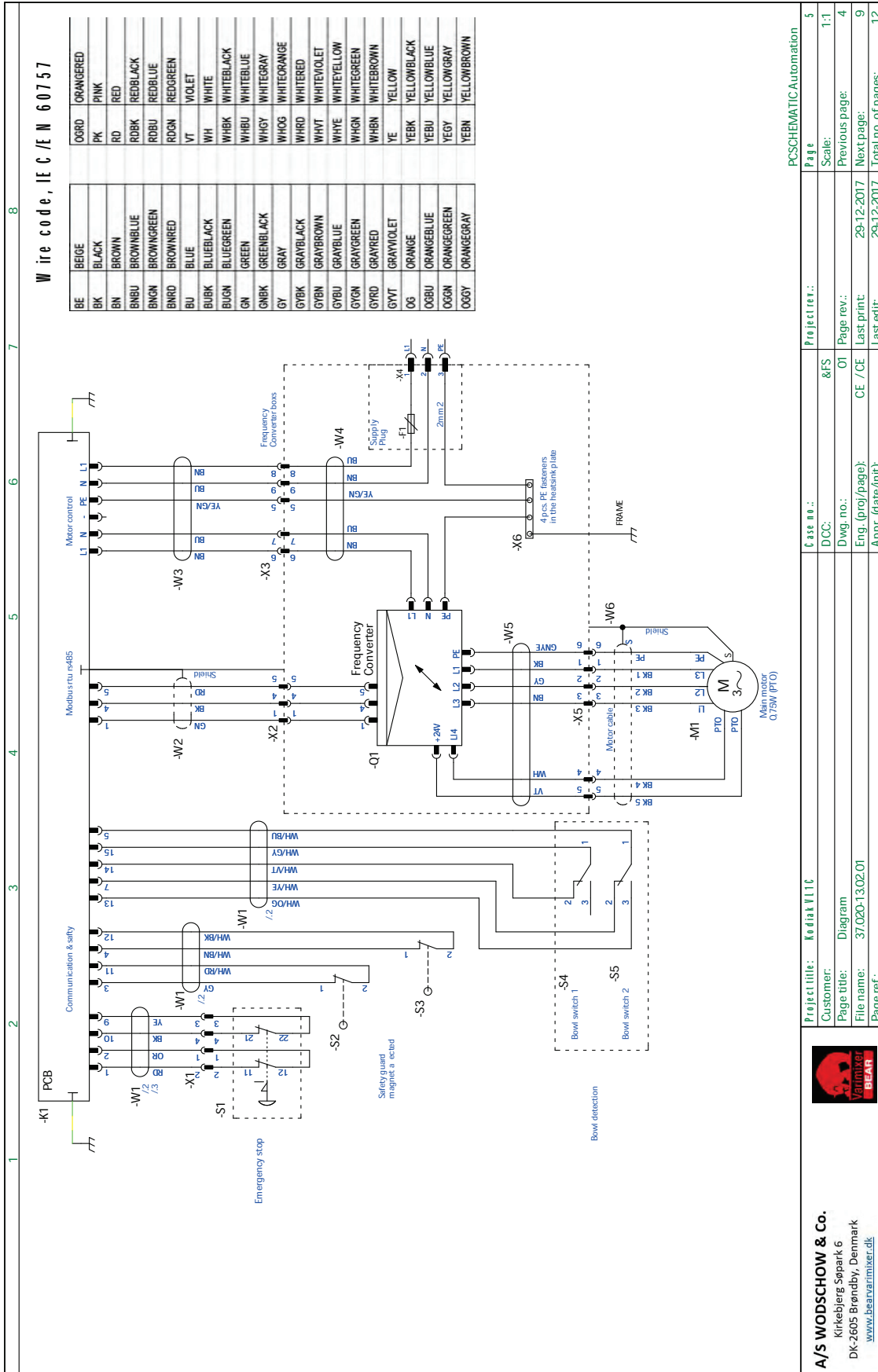
PC-SYSTEMATIC Automation
 Project rev.: 5
 Scale: 1:1
 Previous page: 4
 Next page: 9
 Last print: 29-12-2017
 Last edit: 29-12-2017
 Total no. of pages: 12

Case no.: 8FS
 DCC: 01
 Page rev.: CE / OE
 Eng. (pro)/page):
 Appr. (date/init):

Project title: **Kodlak VL1C**
 Customer: Diagram
 Page title: 37.020-13.02.01
 File name: 37.020-13.02.01
 Page ref.:



A/S WODSCHOW & Co.
 Kirkebjerg Søpark 6
 DK-2605 Brøndby, Denmark
 www.bevarmixer.dk



Project title: Kadal VITC		Case no.:	Project no.:	Page
Customer: Diagram		DCC: &S	01	1:1
Page title: 37.020-13.02.01		Dwg. no.:	CE / CE	Previous page: 4
File name: 37.020-13.02.01		Eng. (prg/page):	CE / CE	Next page: 9
Page ref.:		Appr. (date/int):		Total no. of pages: 12

PCSchematic Automation



A/S WODSCHOW & Co.
 Kirkebjerg Søpark 6
 DK-2605 Brøndby, Denmark
www.bevarvmmixer.dk

