

Spare parts catalogue

Type:
P300

Serial no.:
175746

Date:
20.11.2013

Language:
English (EN)

SD-Document:
1263829

Serviceaddress:



Manufacturer:

MULTIVAC

MULTIVAC Sepp Haggemüller GmbH & Co. KG
Bahnhofstraße 4
D-87787 Wolfertschwenden
Tel: +49 (0) 8334 601-0
www.multivac.com

Handling the spare parts catalogue

Basic information

Spare parts catalogues are produced specifically for certain orders. A separate catalogue is produced for each machine. The correct spare parts can only be ordered when the appropriate catalogue for the machine is consulted.

General information on spare parts drawings

The position numbers on the drawings refer to the relevant position in the subsequent parts list.

General information on the parts list

Position numbers in the parts list refer to the relevant position on the preceding drawing. If the parts list is longer than one page in length, then the drawing is repeated on each subsequent page.

Columns on the parts list:

Pos.	Position number of the part
Material	Order number of the assembly/component
Document	When substructure groups are used, a reference to a further drawing is found here
Version	Current document version
Description	Part description
Quantity	Quantity of installed parts
Unit	Unit of quantity (piece or length specification)
SPC	Spare Part Characteristic. The values 1, 3 and 5 represent a time period in years. Correct part functionality is not guaranteed after this time period has expired. The value 9 represents standard parts.

Special features

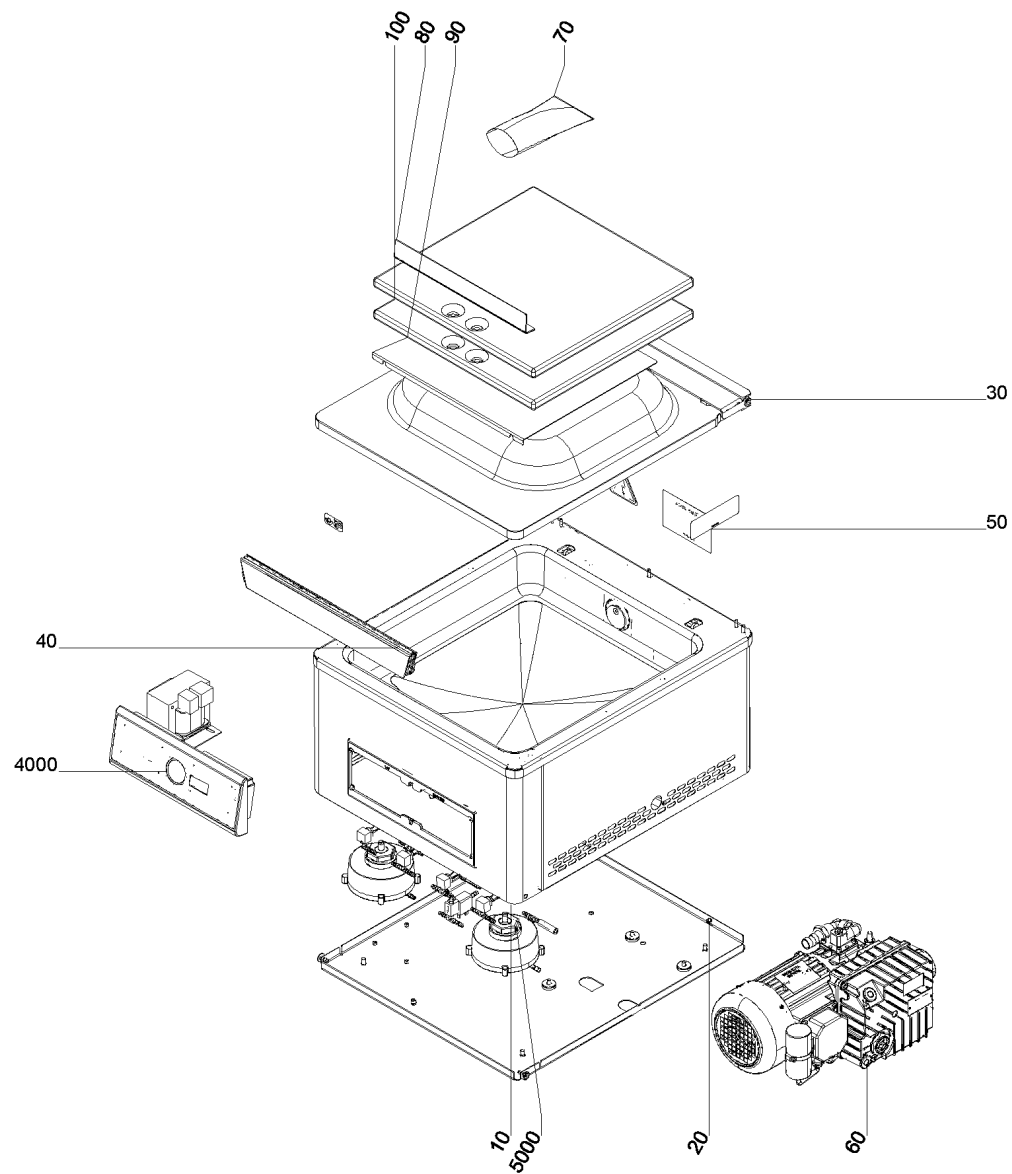
Not all assemblies have individual drawings.
In such cases, text is used instead of a drawing to indicate this.

Certain materials can be used repeatedly in a machine. These can then also appear repeatedly in the spare parts catalogue. They may even be listed directly one after another.

Inhaltsverzeichnis



chamber machine	6
housing.....	8
bottom section.....	10
lock.....	12
lock.....	14
bottom plate.....	16
lid.....	18
lid.....	20
sealing bar.....	22
set of signs.....	24
mark of conformity.....	26
plate.....	28
accessories.....	30
electrical system.....	32
Electro-particle.....	34
pneumatics.....	36
nozzle.....	38
valve unit.....	40
valve.....	42
rapid vent valve.....	44
valve.....	46



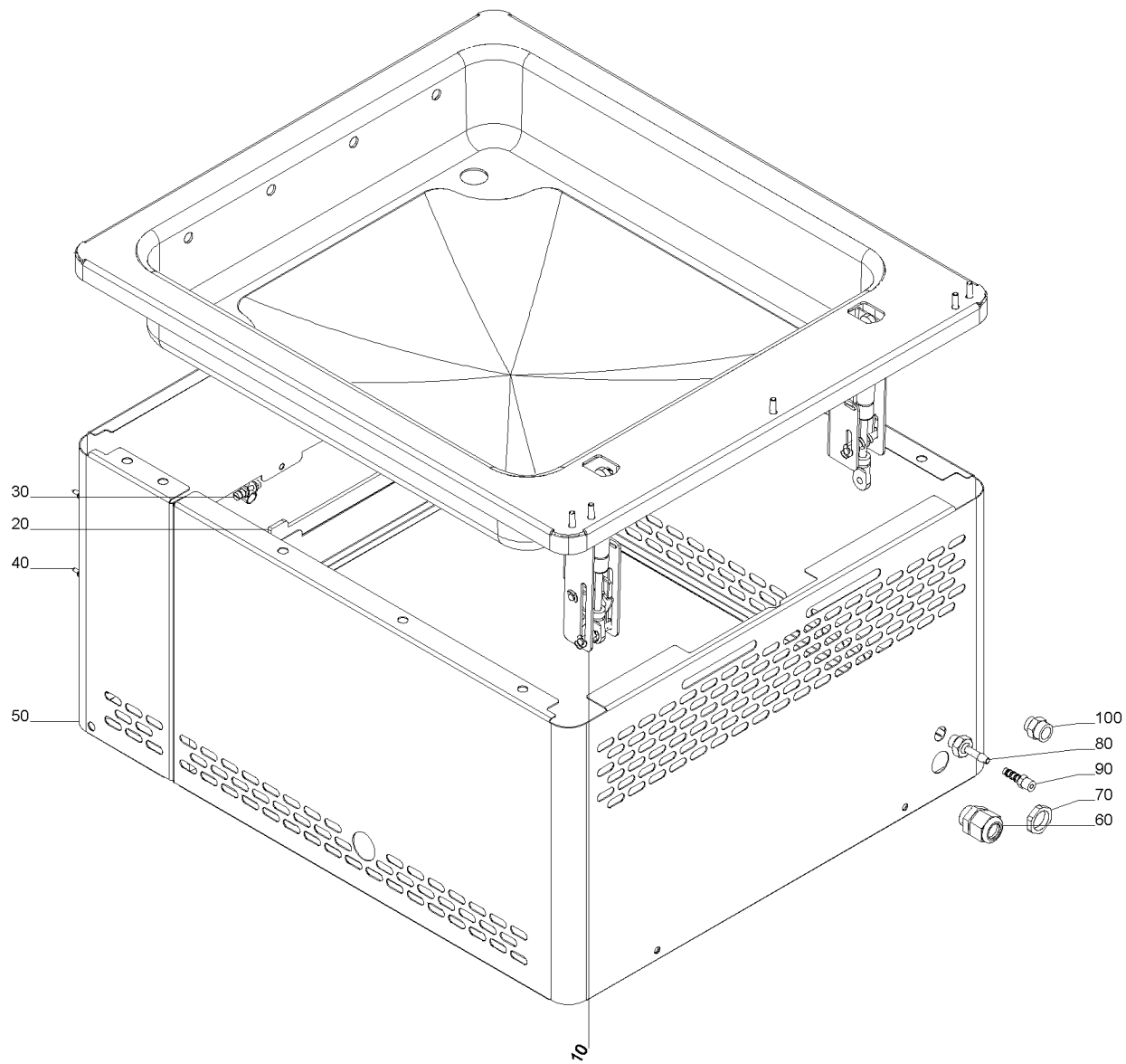
chamber machine
106692053



chamber machine

pos	material	document	version	description	quantity	quantity unit	SPC
10	106882666	16000299081	B	housing	1,000	PC	N
20	106664800	16000249011	B	bottom plate	1,000	PC	N
30	106627947	16000249096	C	lid	1,000	PC	N
40	106624708	16000248513	0	sealing bar	1,000	PC	N
50	106669372	16000255089	0	set of signs	1,000	PC	9
60	106688695			vacuum pump	1,000	PC	5
70	106690105	16000254432	0	accessories	1,000	PC	N
80	106595042			L-bracket	1,000	PC	N
90	106696973			diagonal insert	1,000	PC	N
100	106629477			filling plate	2,000	PC	N
110	106847745			funnel	1,000	PC	N
4000	106735826			electrical system	1,000	PC	N
4010	106753424			control unit	1,000	PC	N
4020	85211050080			earthing contact lead	1,000	PC	N
5000	106668065	16000249271	0	pneumatics	1,000	PC	N

housing
106882666
chamber machine\housing



housing
106882666



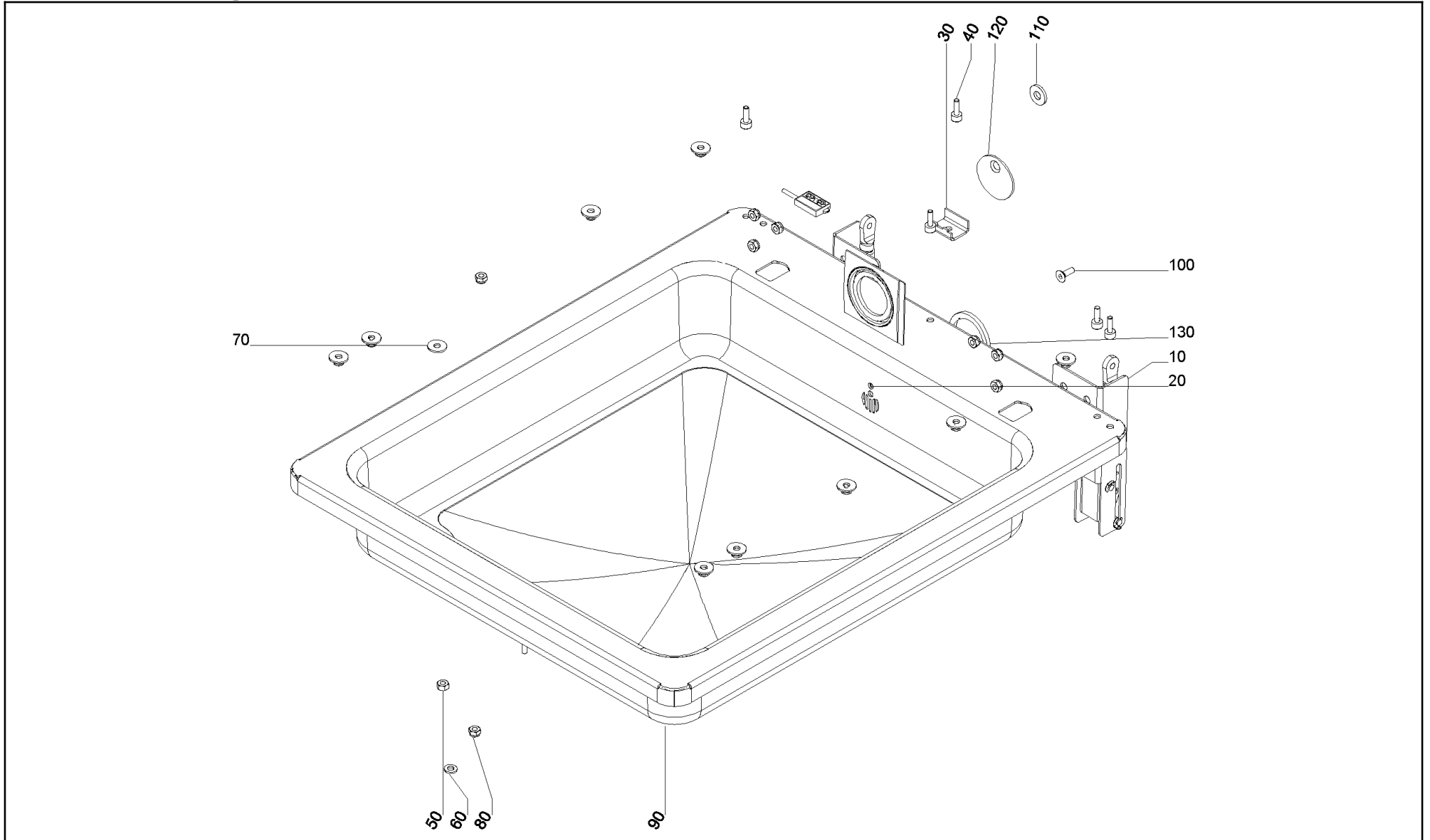
chamber machine\housing

pos	material	document	version	description	quantity	quantity unit	SPC
10	106625330	16000249264	0	bottom section	1,000	PC	N
20	106480503			seal	1,000	PC	N
30	81190110122			hose clamp	1,000	PC	9
40	75085020202			oval head tapping screw	6,000	PC	9
50	106878354			housing	1,000	PC	N
60	85131114912			screwed cable gland	1,000	PC	N
70	85131102022			nut	1,000	PC	N
80	19101109005			threaded socket	1,000	PC	9
90	81141213120			threaded socket	1,000	PC	9
100	81141807902			reducer bell	1,000	PC	9
110	75290001300			sealing ring	1,000	PC	1

bottom section

106625330

chamber machine\housing\bottom section



bottom section**106625330**

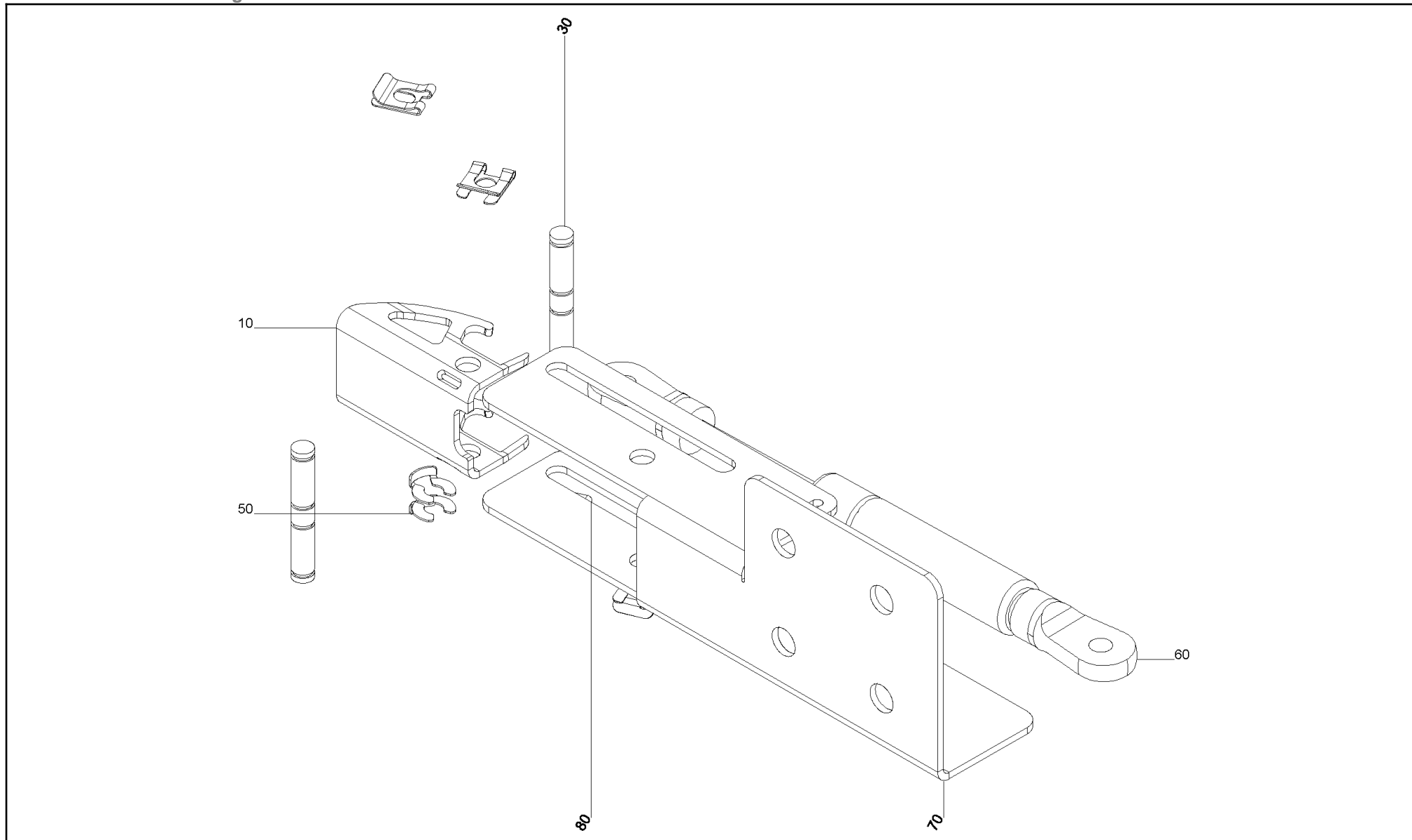
chamber machine\housing\bottom section

pos	material	document	version	description	quantity	quantity unit	SPC
10	106505190	16000316479	D	lock	1,000	PC	N
20	106679218	16000251901	B	lock	1,000	PC	N
30	106557598			bracket	1,000	PC	N
40	75010061116			cylindrical screw	5,000	PC	9
50	75200000602			hexagon nut	1,000	PC	9
60	75211010602			disk	1,000	PC	9
80	75200200602			hexagon nut	18,000	PC	9
90	106614759			bottom section	1,000	PC	N
110	106665200			disk	1,000	PC	N
120	75212082002			disk	1,000	PC	9
130	75020061102			countersunk flat head screw	1,000	PC	9
1000	106844045			seal	1,000	PC	N

lock
106505190



chamber machine\housing\bottom section\lock



lock
106505190



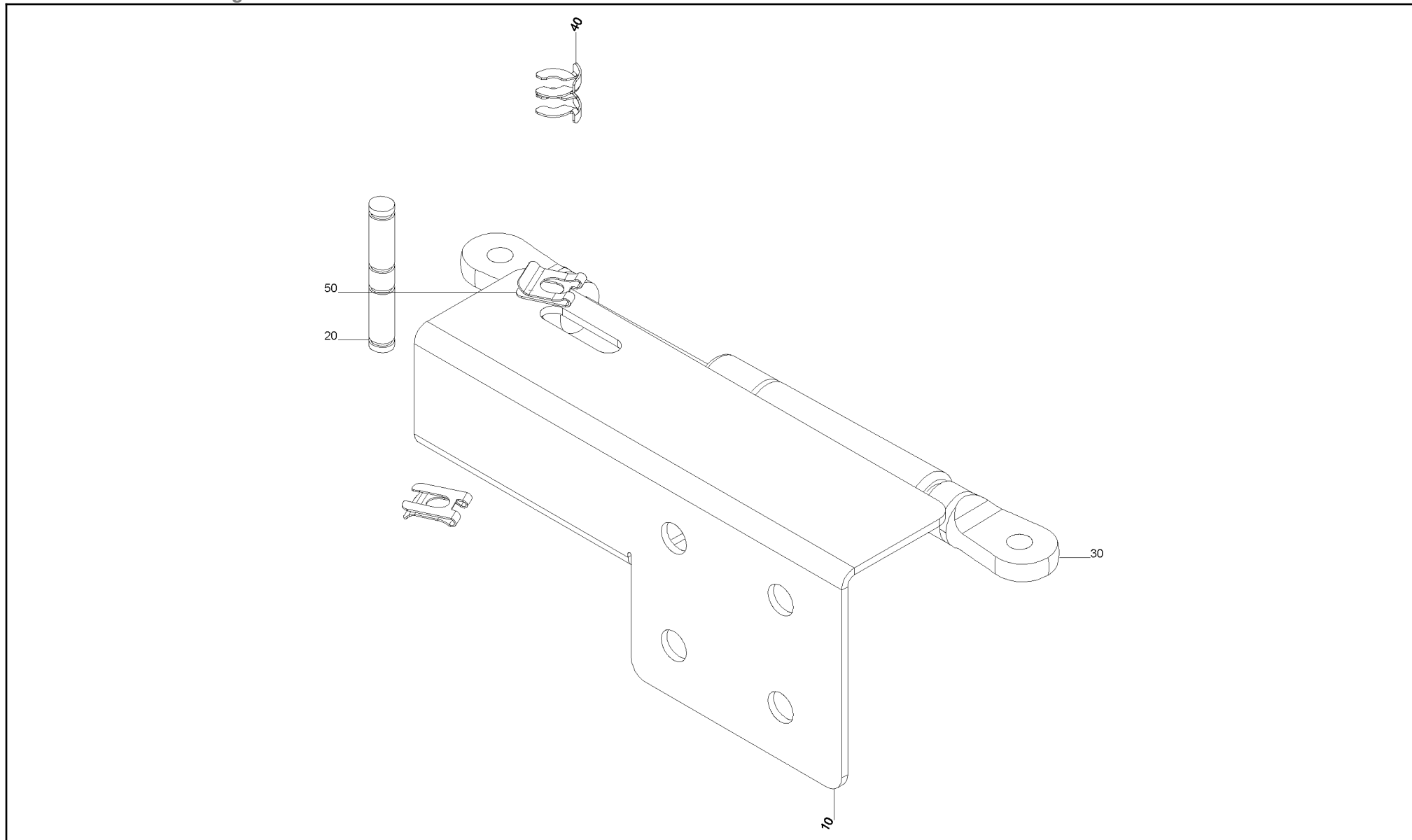
chamber machine\housing\bottom section\lock

pos	material	document	version	description	quantity	quantity unit	SPC
10	106713329			lock	1,000	PC	N
30	106420051			bolt	2,000	PC	N
50	106470582			thrust washer	2,000	PC	N
60	106526998			pneumatic spring	1,000	PC	5
70	106713328			L-bracket	1,000	PC	N
80	106912728			thrust washer	4,000	PC	9

lock
106679218



chamber machine\housing\bottom section\lock



lock
106679218



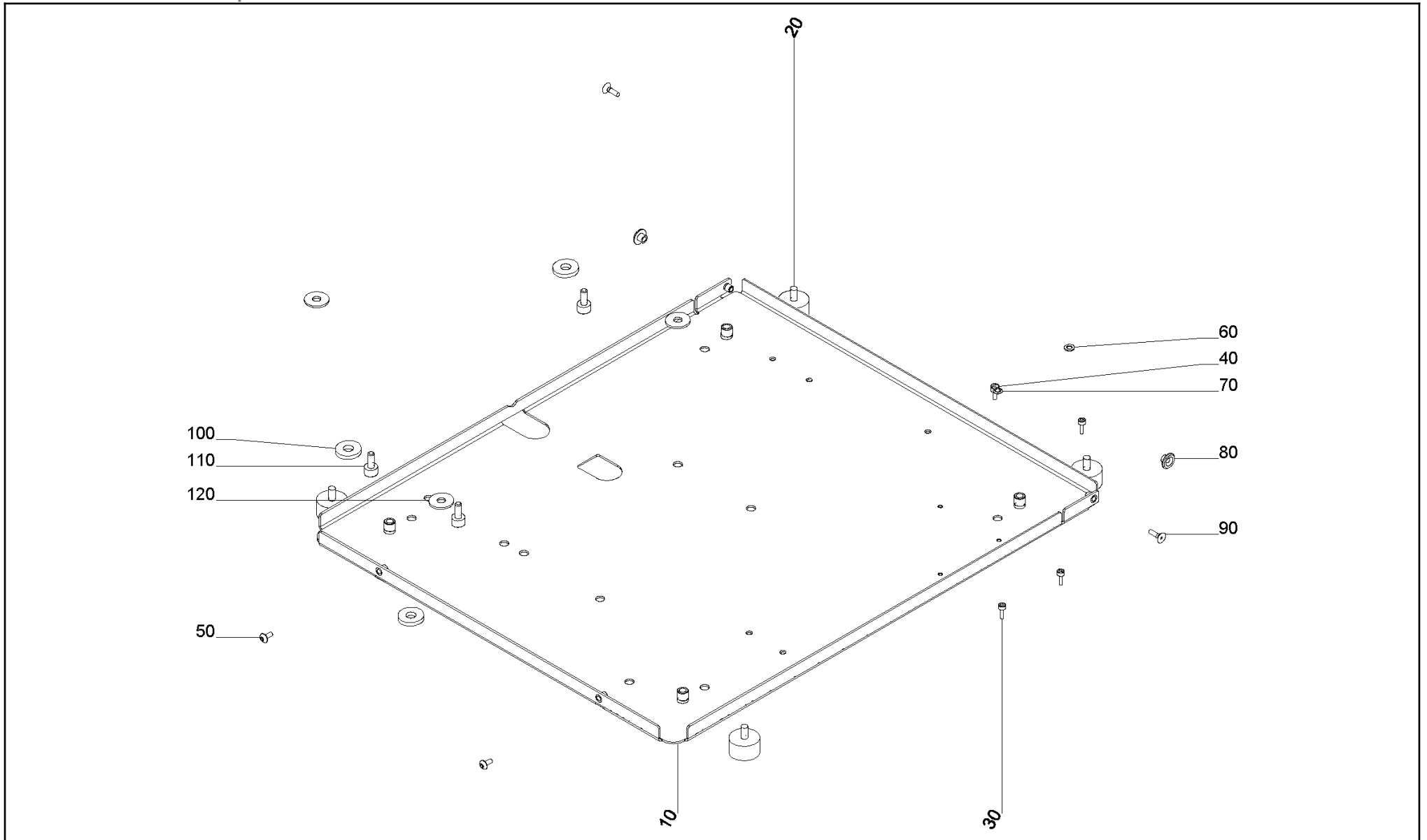
chamber machine\housing\bottom section\lock

pos	material	document	version	description	quantity	quantity unit	SPC
10	106679214			L-bracket	1,000	PC	N
20	106420051			bolt	1,000	PC	N
30	106526998			pneumatic spring	1,000	PC	5
40	106470582			thrust washer	2,000	PC	N
50	106912728			thrust washer	2,000	PC	9

bottom plate

106664800

chamber machine\bottom plate



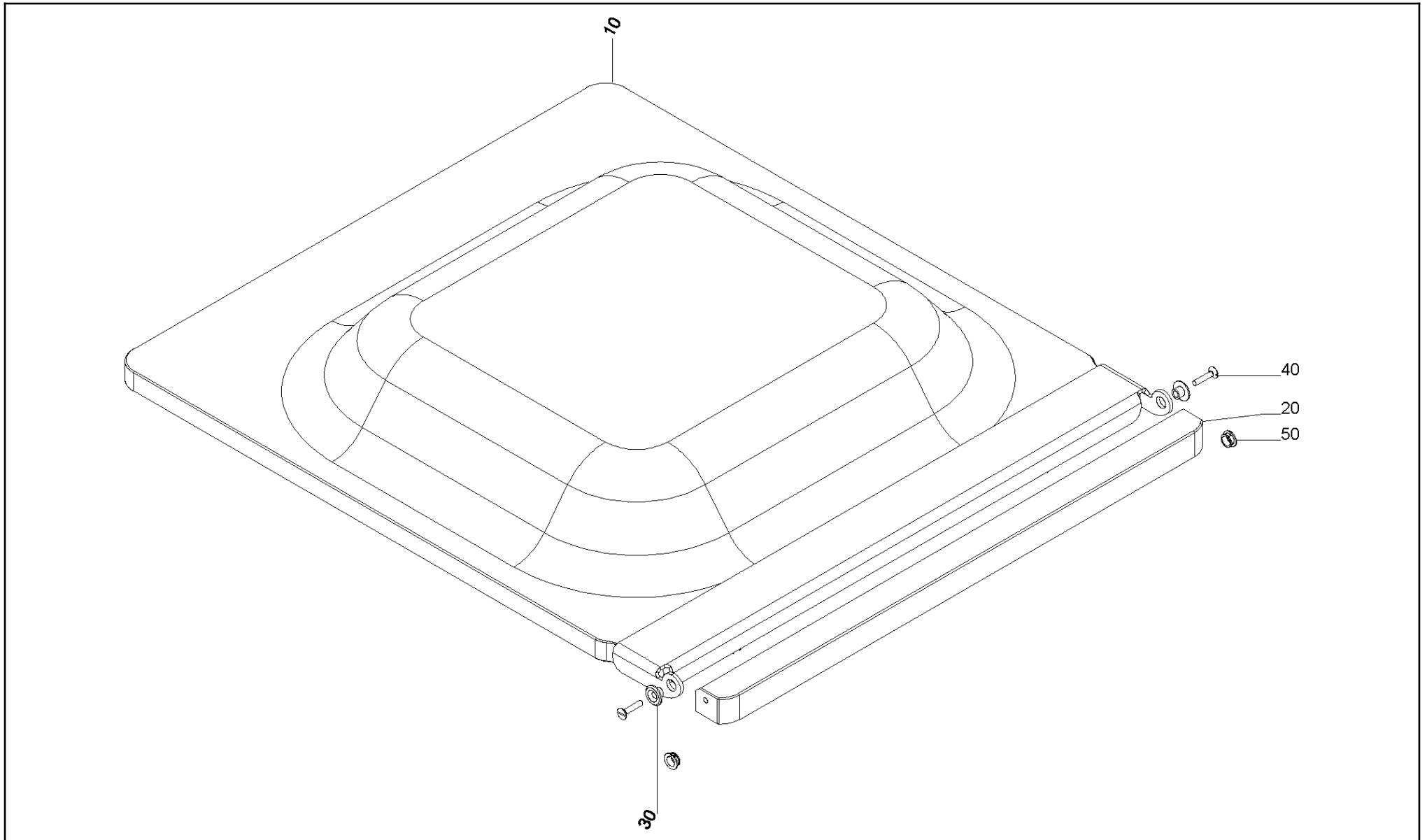
bottom plate
106664800



chamber machine\bottom plate

pos	material	document	version	description	quantity	quantity unit	SPC
10	106780522			bottom plate	1,000	PC	N
20	81932111330			rubber metal cushion	4,000	PC	N
30	75010040902			cylindrical screw	3,000	PC	9
40	75010050802			cylindrical screw	1,000	PC	9
50	75028050802			lens head screw	2,000	PC	9
60	75211010502			disk	1,000	PC	9
70	75210070502			thrust washer	1,000	PC	9
80	106415606			round	2,000	PC	N
90	105775663			countersunk flat head screw	2,000	PC	9
100	19717110150			disk	3,000	PC	N
110	75010081116			cylindrical screw	3,000	PC	9
120	75211030802			disk	3,000	PC	9

lid
106627947
chamber machine\lid



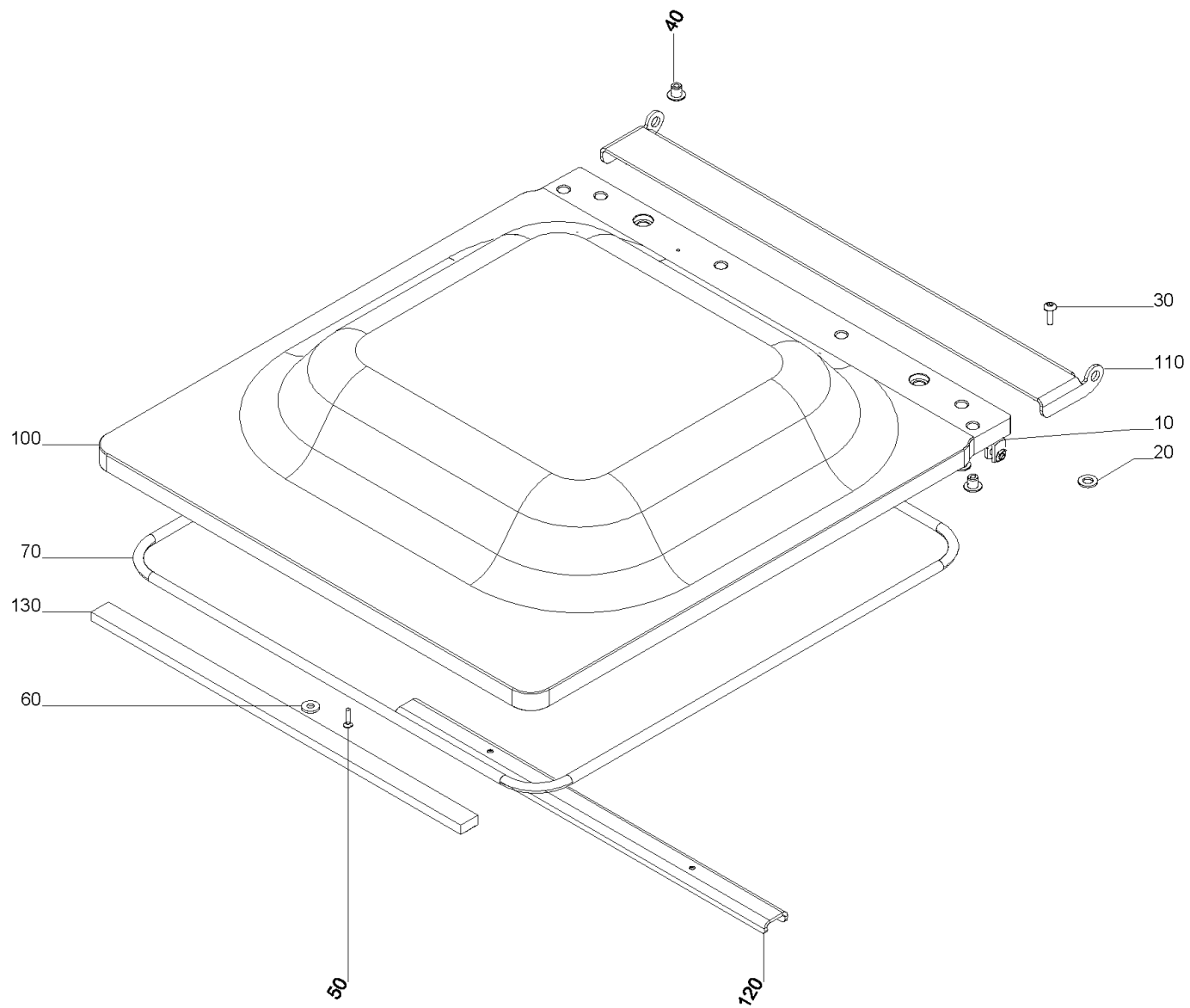
lid
106627947



chamber machine\lid

pos	material	document	version	description	quantity	quantity unit	SPC
10	106850375	16000309574	A	lid	1,000	PC	N
20	106842161			bar	1,000	PC	N
30	106415606			round	2,000	PC	N
40	75021051302			countersunk flat head screw	2,000	PC	9
50	105974724			slide bearings	2,000	PC	3

lid
106850375
chamber machine\lid\lid



lid
106850375



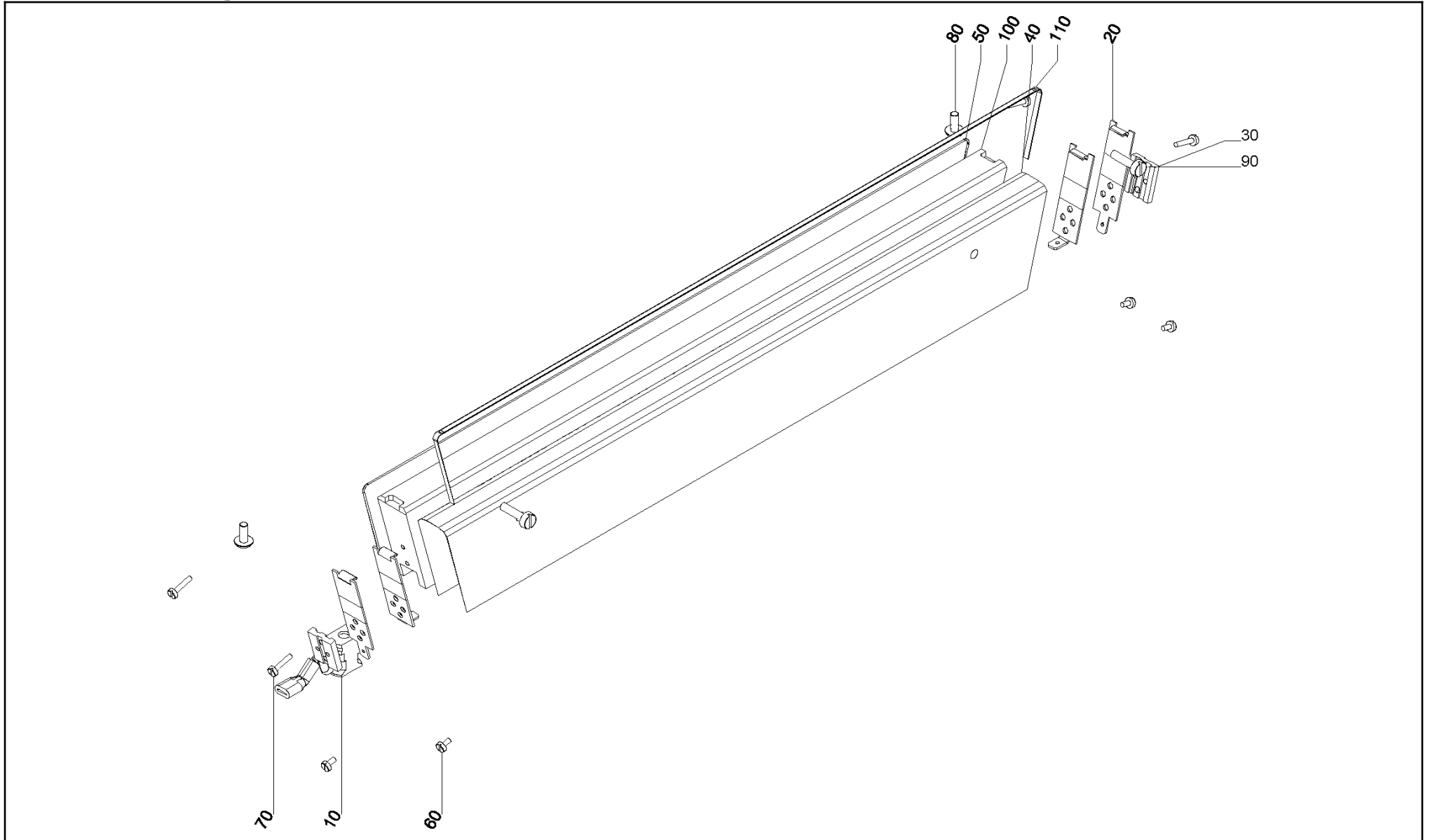
chamber machine\lid\lid

pos	material	document	version	description	quantity	quantity unit	SPC
10	106399953			fork head	2,000	PC	3
20	75211010802			disk	2,000	PC	9
30	75028061102			lens head screw	2,000	PC	9
40	106521253			Sleeve nut	6,000	PC	N
50	75021041102			countersunk flat head screw	2,000	PC	9
60	19717106710			disk	2,000	PC	N
70	105893127			toroidal seal	1,910	M	3
100	106850376			lid	1,000	PC	N
110	106850378			holder	1,000	PC	N
120	106627550			rail	1,000	PC	N
130	106739631			wearing part set	1,000	PC	1

sealing bar

106624708

chamber machine\sealing bar



sealing bar
106624708



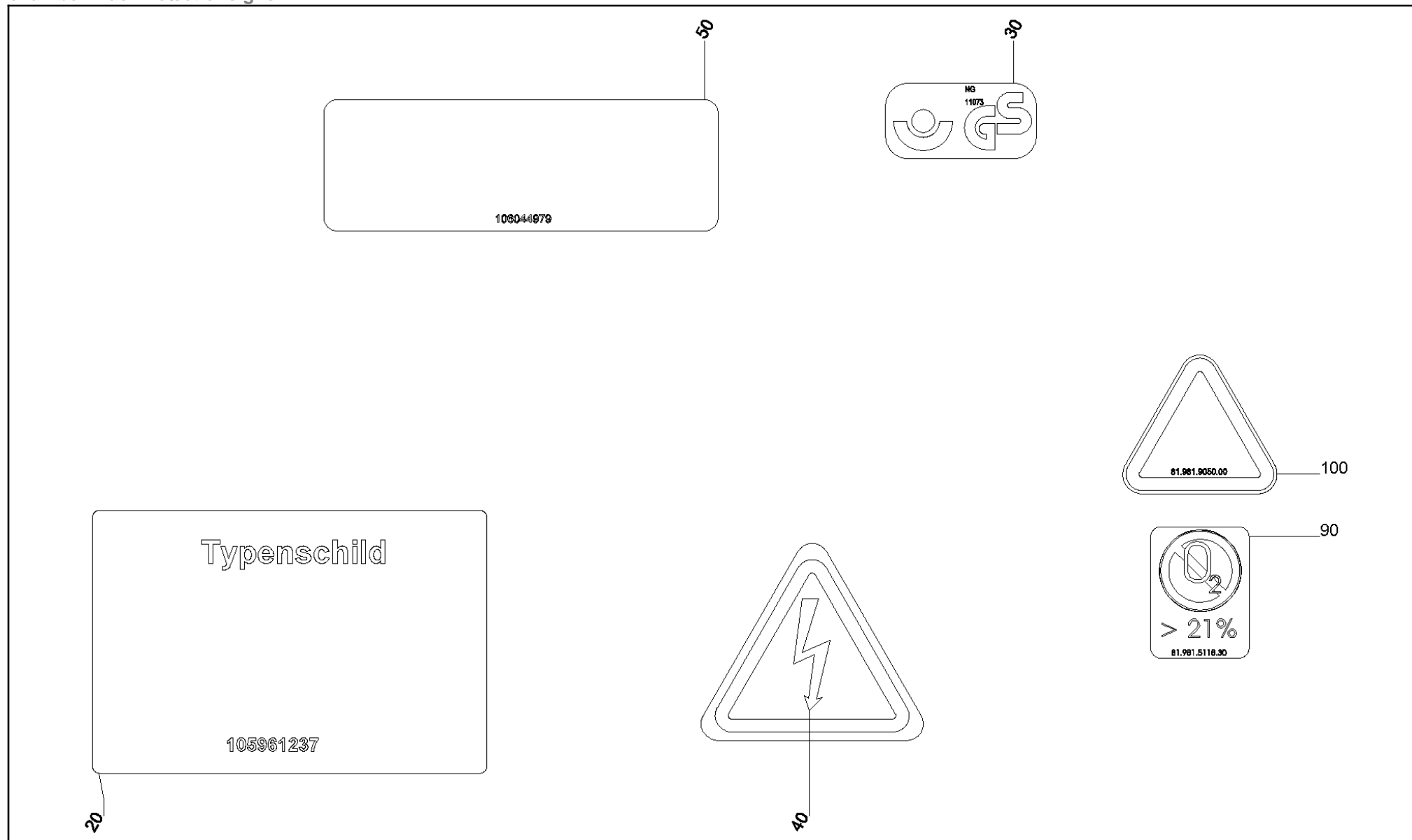
chamber machine\sealing bar

pos	material	document	version	description	quantity	quantity unit	SPC
10	85123126101			contact jack	2,000	PC	N
20	11131187050			contact spring	2,000	PC	5
30	11131268010			clamping piece	2,000	PC	3
40	105311871			Teflon tape	0,430	M	1
50	85662802090			round wire	0,600	M	1
60	75015030302			cylindrical screw	4,000	PC	9
70	75015030902			cylindrical screw	4,000	PC	9
80	75028050802			lens head screw	2,000	PC	9
90	75015051102			cylindrical screw	2,000	PC	9
100	106628014			rail	1,000	PC	N
110	106630123			heat band	1,000	PC	1

set of signs

106669372

chamber machine\set of signs



set of signs

106669372



chamber machine\set of signs

pos	material	document	version	description	quantity	quantity unit	SPC
20	105961237			type plate	1,000	PC	N
30	106778671			mark of conformity	1,000	PC	N
50	106044979			106044979	1,000	PC	5
90	81981511830			information sign	1,000	PC	N
100	81981905000			warning sign	1,000	PC	N

mark of conformity
106778671

chamber machine\set of signs\mark of conformity



keine Zeichnung vorhanden
no drawing available

mark of conformity
106778671



chamber machine\set of signs\mark of conformity

pos	material	document	version	description	quantity	quantity unit	SPC
10	106932217			plate	1,000	PC	N
20	106961126			carbon ribbon	1,000	PC	N

plate
106932217

chamber machine\set of signs\mark of conformity\plate



keine Zeichnung vorhanden
no drawing available

plate
106932217



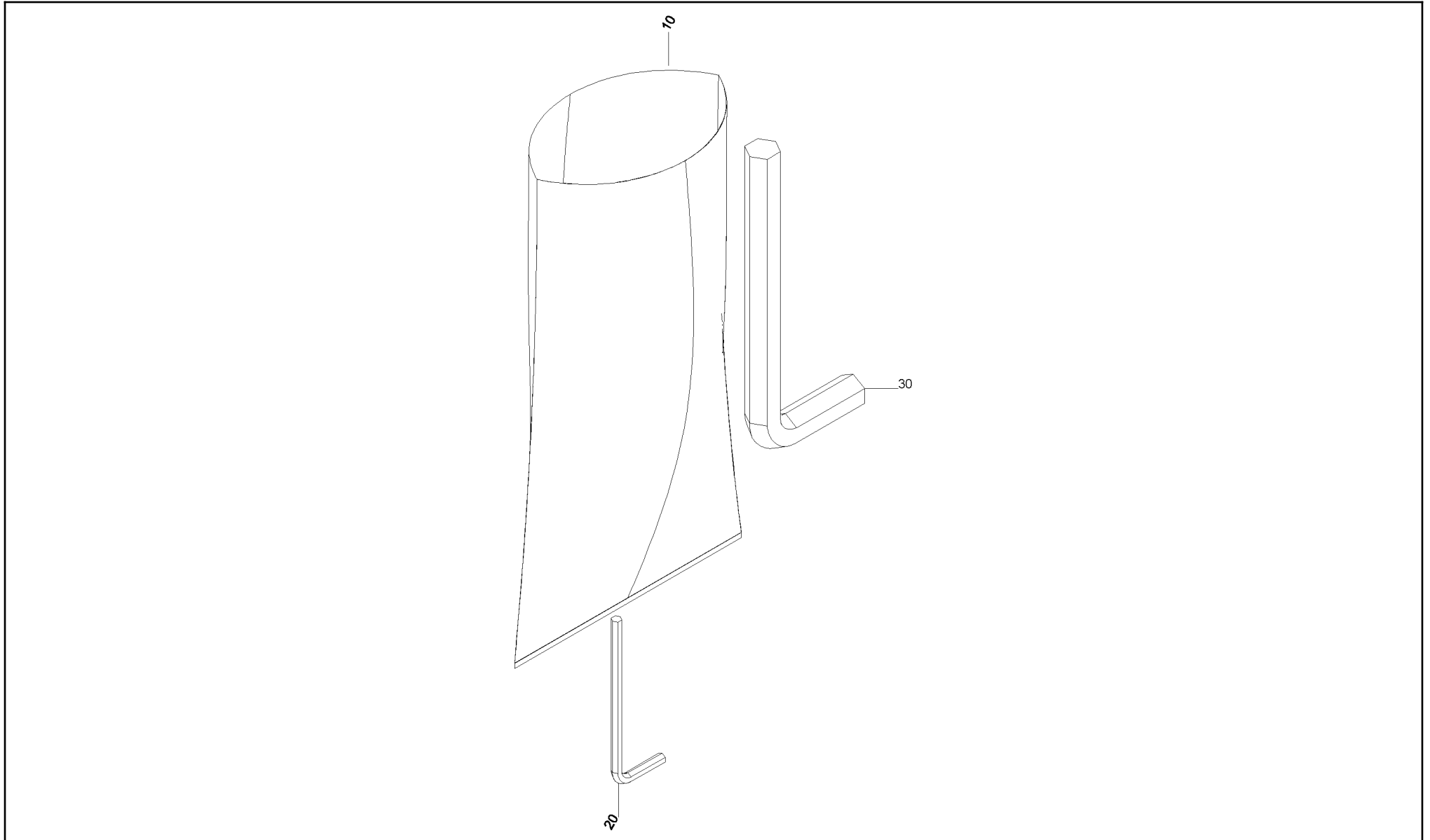
chamber machine\set of signs\mark of conformity\plate

pos	material	document	version	description	quantity	quantity unit	SPC
10	91631102001			film	1,000	PC	N

accessories

106690105

chamber machine\accessories



accessories

106690105



chamber machine\accessories

pos	material	document	version	description	quantity	quantity unit	SPC
10	81897205101			pouch	1,000	PC	N
20	96607000007			Allen key	1,000	PC	N
30	96607000019			Allen key	1,000	PC	N

electrical system

106735826

chamber machine\electrical system



keine Zeichnung vorhanden
no drawing available

electrical system

106735826



chamber machine\electrical system

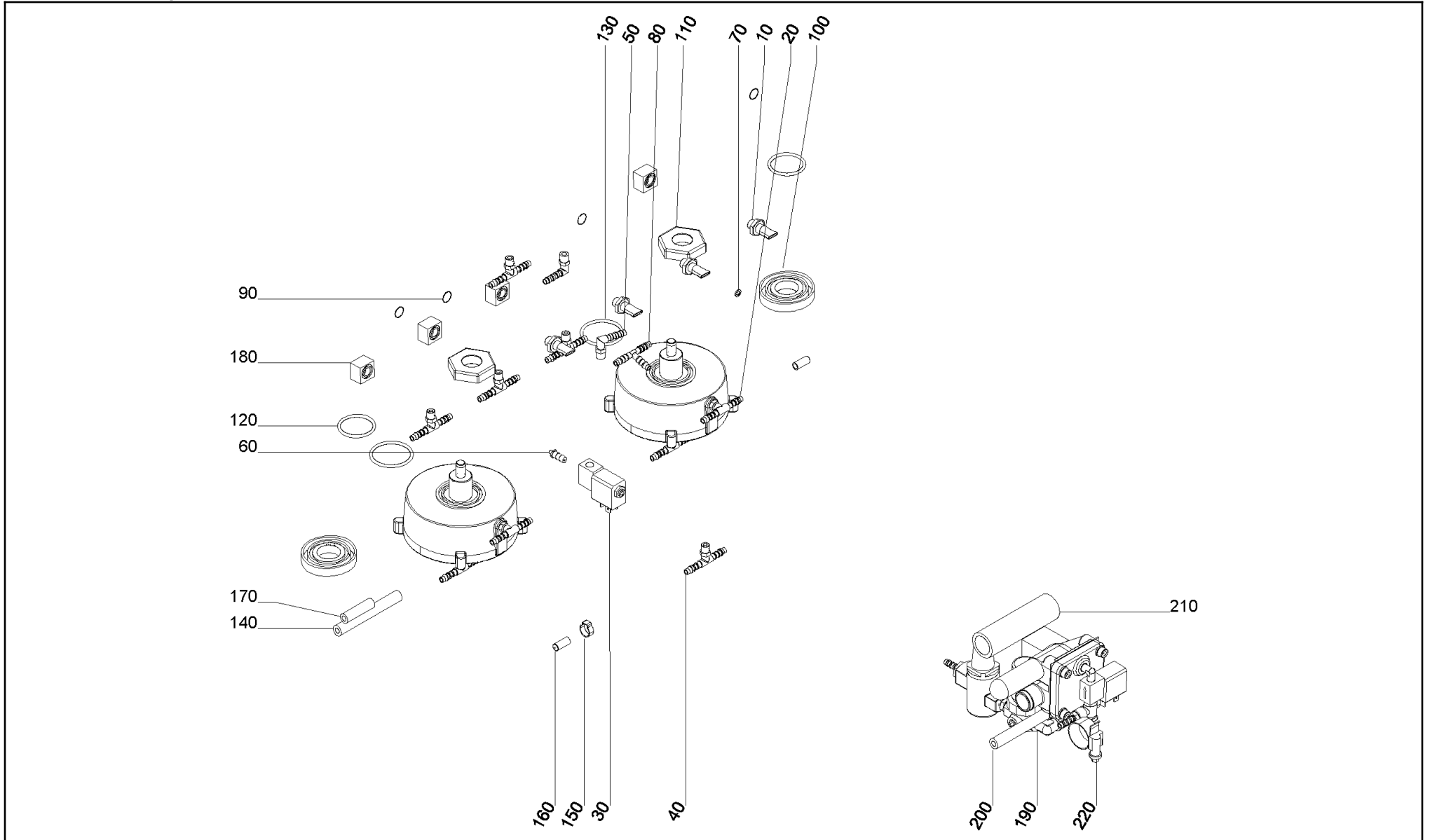
pos	material	document	version	description	quantity	quantity unit	SPC
10	106736156			Electro-particle	1,000	PC	N
40	85463101601			magnetic reed switch	1,000	PC	3
50	85211050000			jumper wire	1,000	PC	N
60	85211050000			jumper wire	1,000	PC	N
70	85641281110			transformer	1,000	PC	N

keine Zeichnung vorhanden
no drawing available

Electro-particle**106736156**

chamber machine\electrical system\Electro-particle

pos	material	document	version	description	quantity	quantity unit	SPC
10	85148201030			cable tie	5,000	PC	N
20	81981211002			self-adhesive sign	2,000	PC	N
30	85148201110			fixing base	3,000	PC	N
40	85121131151			receptacle	2,000	PC	N
50	85121191070			wire-end ferrule	10,000	PC	N
70	85211030251			cable line	0,500	M	N
80	85211030250			cable line	0,950	M	N
100	106514962			label	1,000	PC	N



pneumatics
106668065

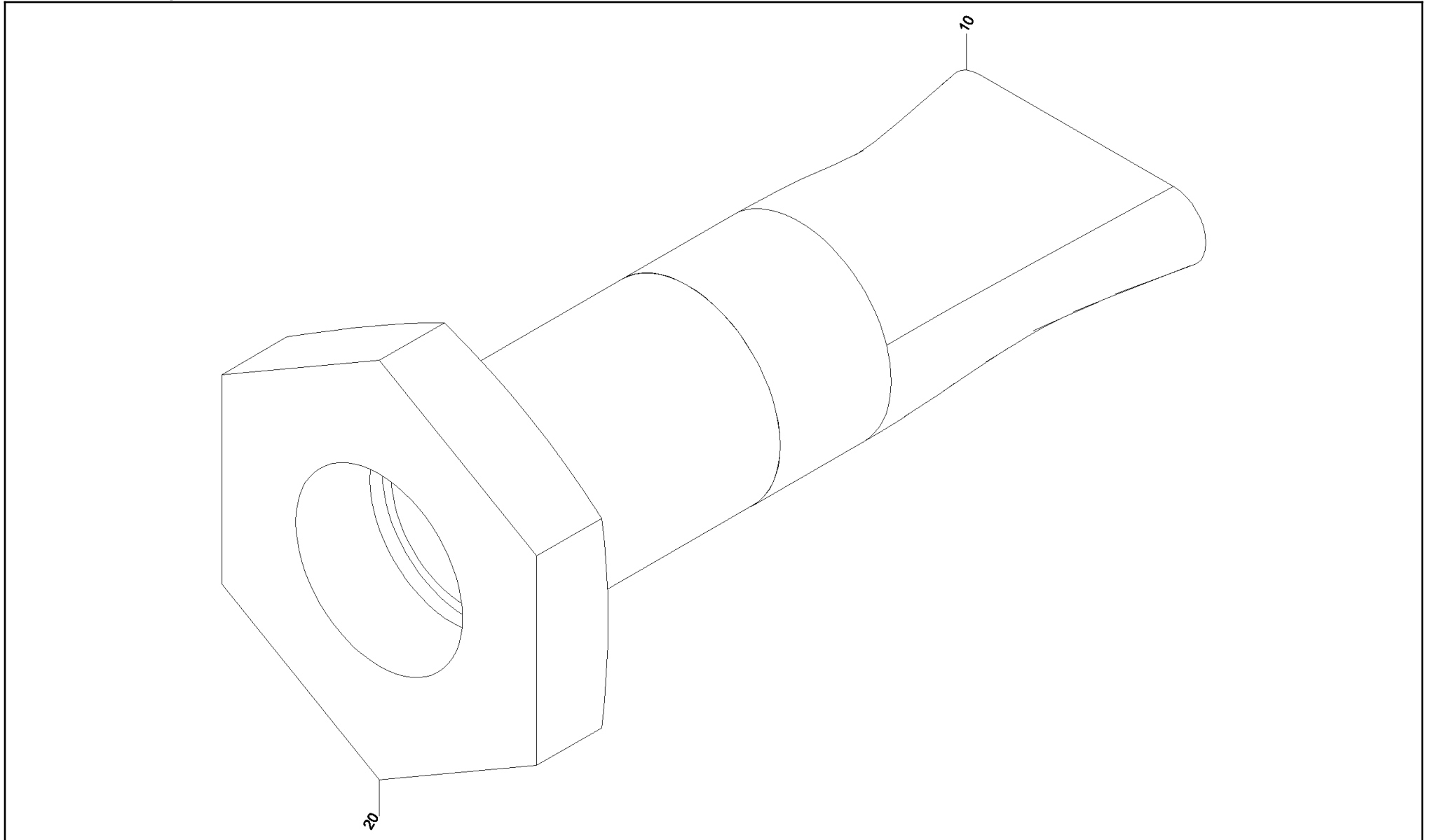


chamber machine\pneumatics

pos	material	document	version	description	quantity	quantity unit	SPC
10	106450638	16000201871	0	nozzle	4,000	PC	N
20	106628465			cylinder	2,000	PC	5
30	80260112003			3/2 valve	1,000	PC	3
40	81141213180			threaded socket	5,000	PC	9
50	81141213210			threaded socket	2,000	PC	9
60	81141153010			threaded socket	1,000	PC	9
70	75290000500			sealing ring	1,000	PC	1
80	81141293122			hose connector	1,000	PC	9
90	78301012200			o-ring	4,000	PC	1
100	106850704			spacer	2,000	PC	N
110	106564582			hexagon nut	2,000	PC	9
120	78301034300			o-ring	2,000	PC	N
130	106722308			o-ring	2,000	PC	N
140	81811120610			fabric hose	4,300	M	9
150	81190200621			hose clamp	24,000	PC	9
160	81141806903			sealing cap	2,000	PC	9
170	81811130620			spiral hose	0,600	M	9
180	106694033			holder	4,000	PC	N
190	106601647	16000233698	A	valve unit	1,000	PC	N
200	106663471	16000249109	A	valve	1,000	PC	N
210	81811132230			spiral hose	1,200	M	9
220	81190112282			hose clamp	1,000	PC	9
230	11186128253			cable	1,000	PC	N

nozzle
106450638

chamber machine\pneumatics\nozzle



nozzle
106450638

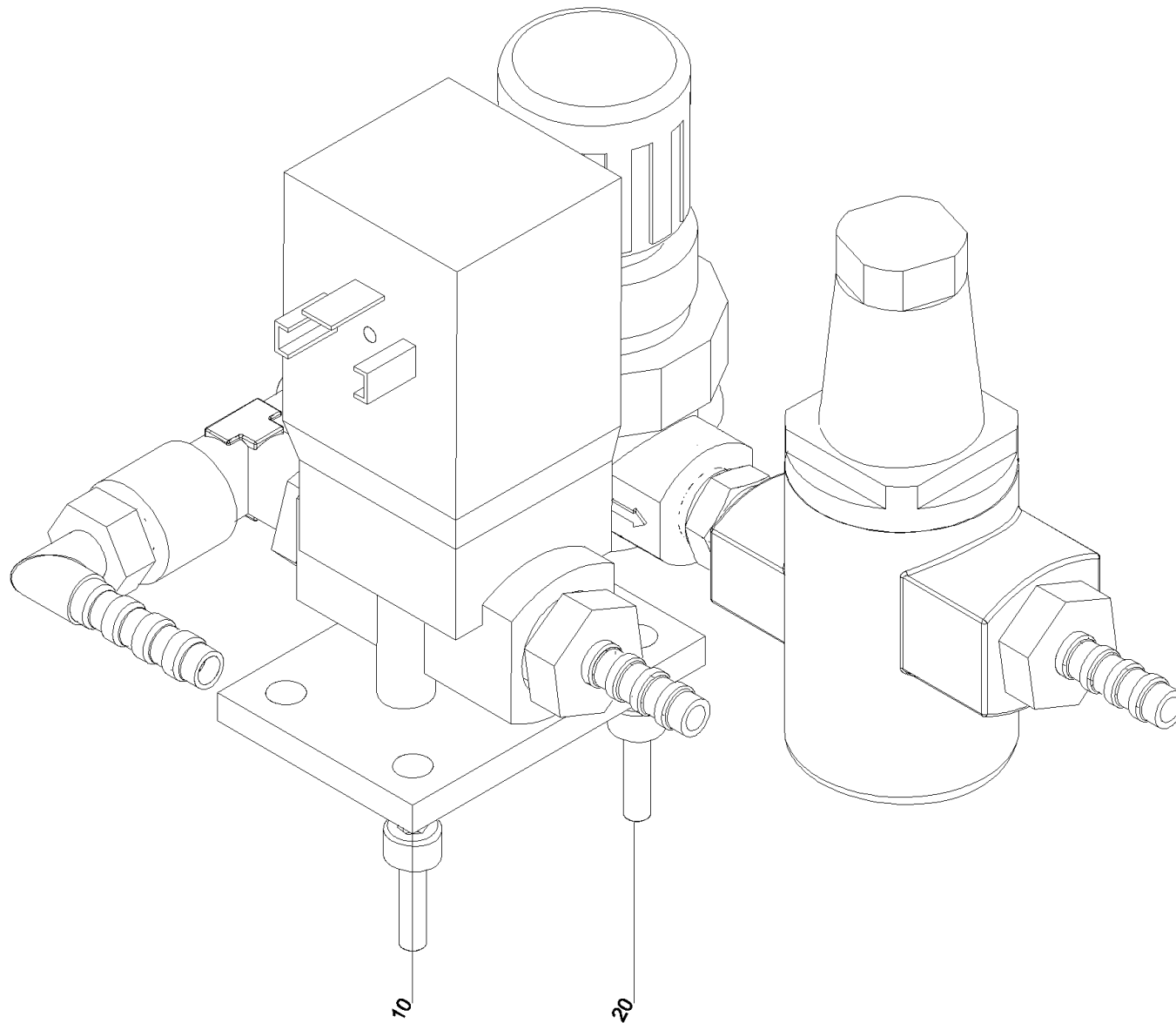


chamber machine\pneumatics\nozzle

pos	material	document	version	description	quantity	quantity unit	SPC
10	106450563			nozzle	1,000	PC	1
20	106243765			nut	1,000	PC	N

valve unit
106601647

chamber machine\pneumatics\valve unit



valve unit
106601647

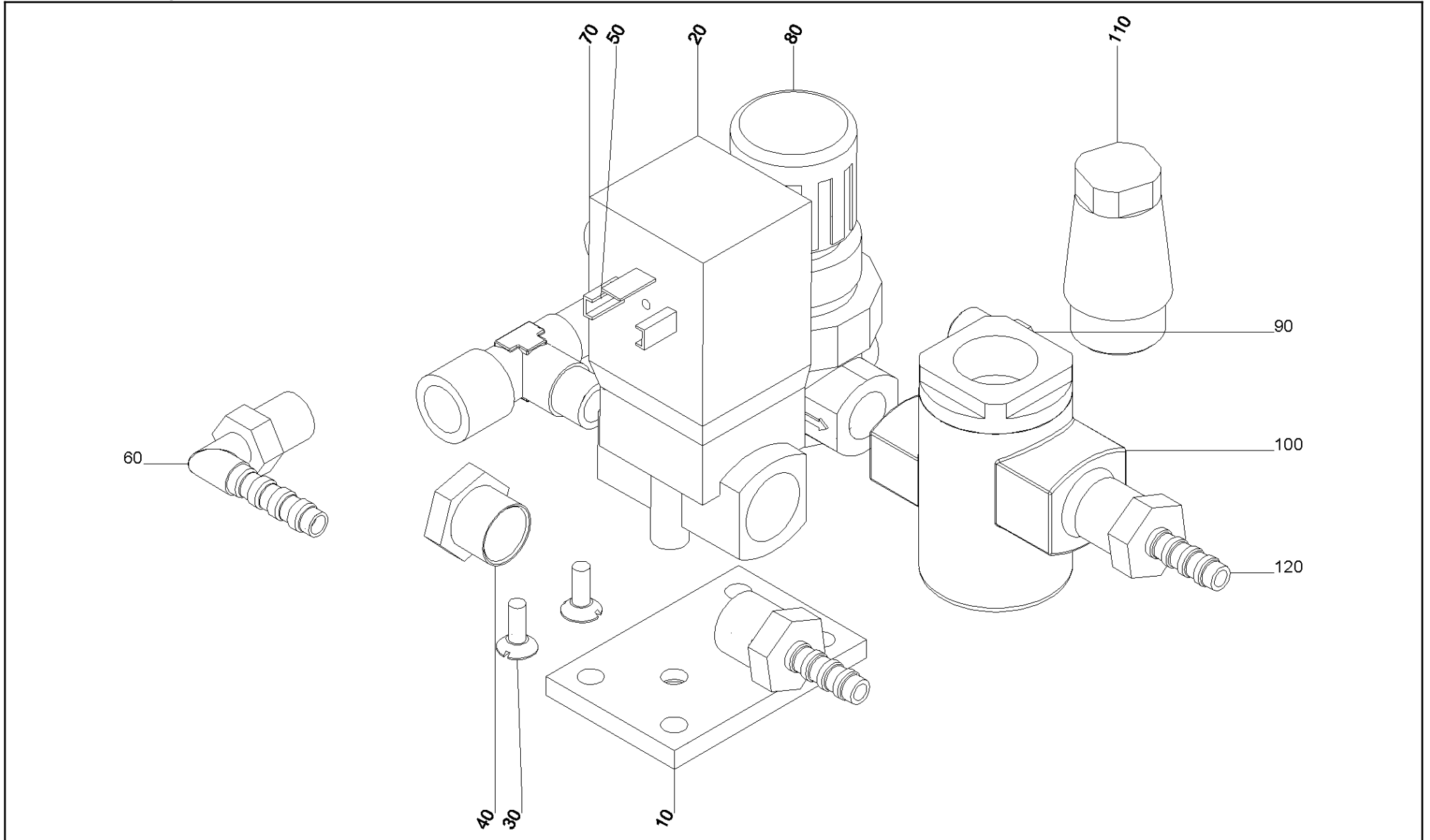


chamber machine\pneumatics\valve unit

pos	material	document	version	description	quantity	quantity unit	SPC
10	106473252	16000206325	A	valve	1,000	PC	3
20	75010051102			cylindrical screw	2,000	PC	9

valve
106473252

chamber machine\pneumatics\valve unit\valve



valve
106473252



chamber machine\pneumatics\valve unit\valve

pos	material	document	version	description	quantity	quantity unit	SPC
10	11181860004			plate	1,000	PC	N
20	106473198			2/2 valve	1,000	PC	3
30	75021050902			countersunk flat head screw	2,000	PC	9
40	81141807705			reducing nipple	1,000	PC	9
50	81141808402			T-piece	1,000	PC	9
60	81141213211			threaded socket	1,000	PC	9
70	81141808202			L-bracket	1,000	PC	9
80	80278111010			pressure regulator	1,000	PC	5
90	81141192202			barrel nipple	1,000	PC	9
100	80275111100	101835620	0	rapid vent valve	1,000	PC	3
110	80291114130			sound absorber	1,000	PC	3
120	81141213155			threaded socket	2,000	PC	9

rapid vent valve
80275111100

chamber machine\pneumatics\valve unit\valve\rapid vent valve



keine Zeichnung vorhanden
no drawing available

rapid vent valve
80275111100

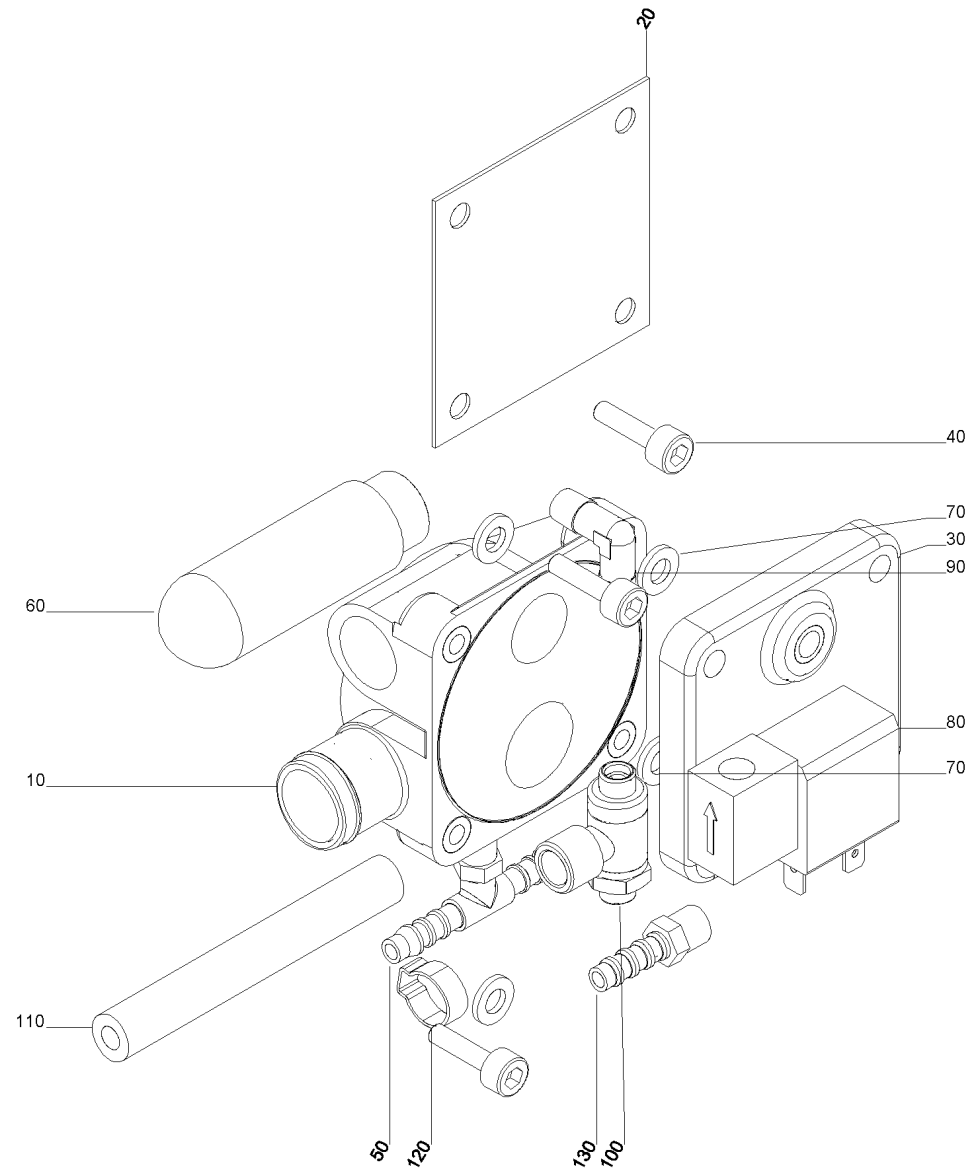


chamber machine\pneumatics\valve unit\valve\rapid vent valve

pos	material	document	version	description	quantity	quantity unit	SPC
1	80275111499			diaphragm	1,000	PC	3
2	80275111402			gasket set	1,000	PC	3

valve
106663471

chamber machine\pneumatics\valve



valve
106663471



chamber machine\pneumatics\valve

pos	material	document	version	description	quantity	quantity unit	SPC
10	11181751080			valve body	1,000	PC	N
20	11181798040			diaphragm	1,000	PC	1
30	11181756500			valve bonnet	1,000	PC	5
40	75010061316			cylindrical screw	4,000	PC	9
50	81141213180			threaded socket	1,000	PC	9
60	80291114500			sound absorber	1,000	PC	3
70	75211010602			disk	4,000	PC	9
80	80260112003			3/2 valve	1,000	PC	3
90	81141809200			L-bracket	1,000	PC	9
100	80271111010			throttle valve	1,000	PC	5
110	81811120610			fabric hose	0,170	M	9
120	81190200621			hose clamp	2,000	PC	9
130	81141213120			threaded socket	1,000	PC	9