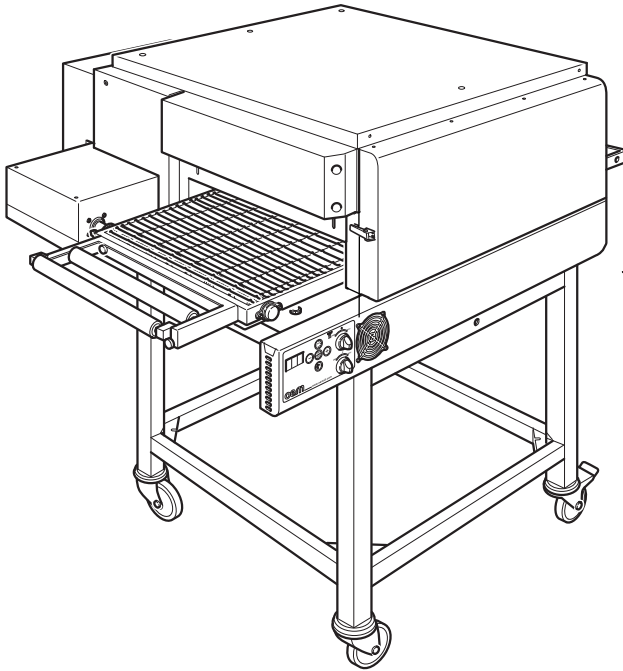


RICAMBI

SPARE PARTS - PIECES DETACHEES

ERSATZTEILE - REPUESTOS



oem	_____ kW	_____ Volt
	_____ A	_____ Hz
Ali SpA	Type _____	
Viale Lombardia, 33 BOZZOLO (MN)	Nr _____	
CE		

Modello.....
Model
Modèle
Modell
Modelo

n° di matricola.....
Serial No.
N° de matricule
Kennnummer
N° matricula

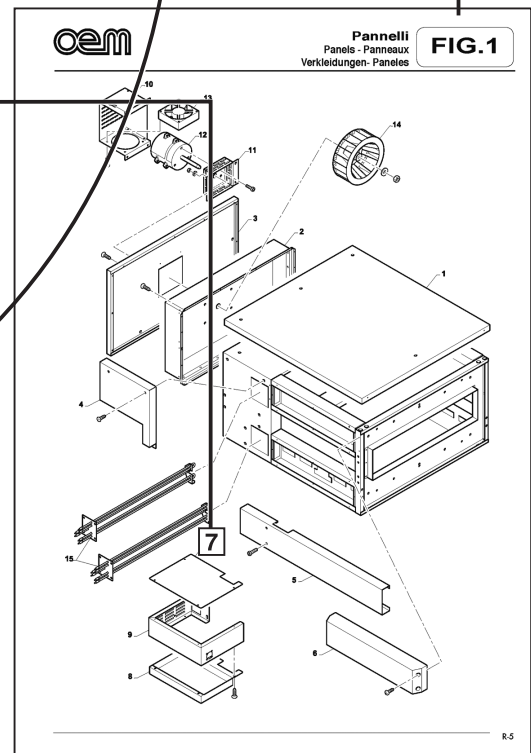
n° di posizione.....
Part No.
N° de position
Position Nr.
N° referencia

Codice.....
Code
Code
Code
Código

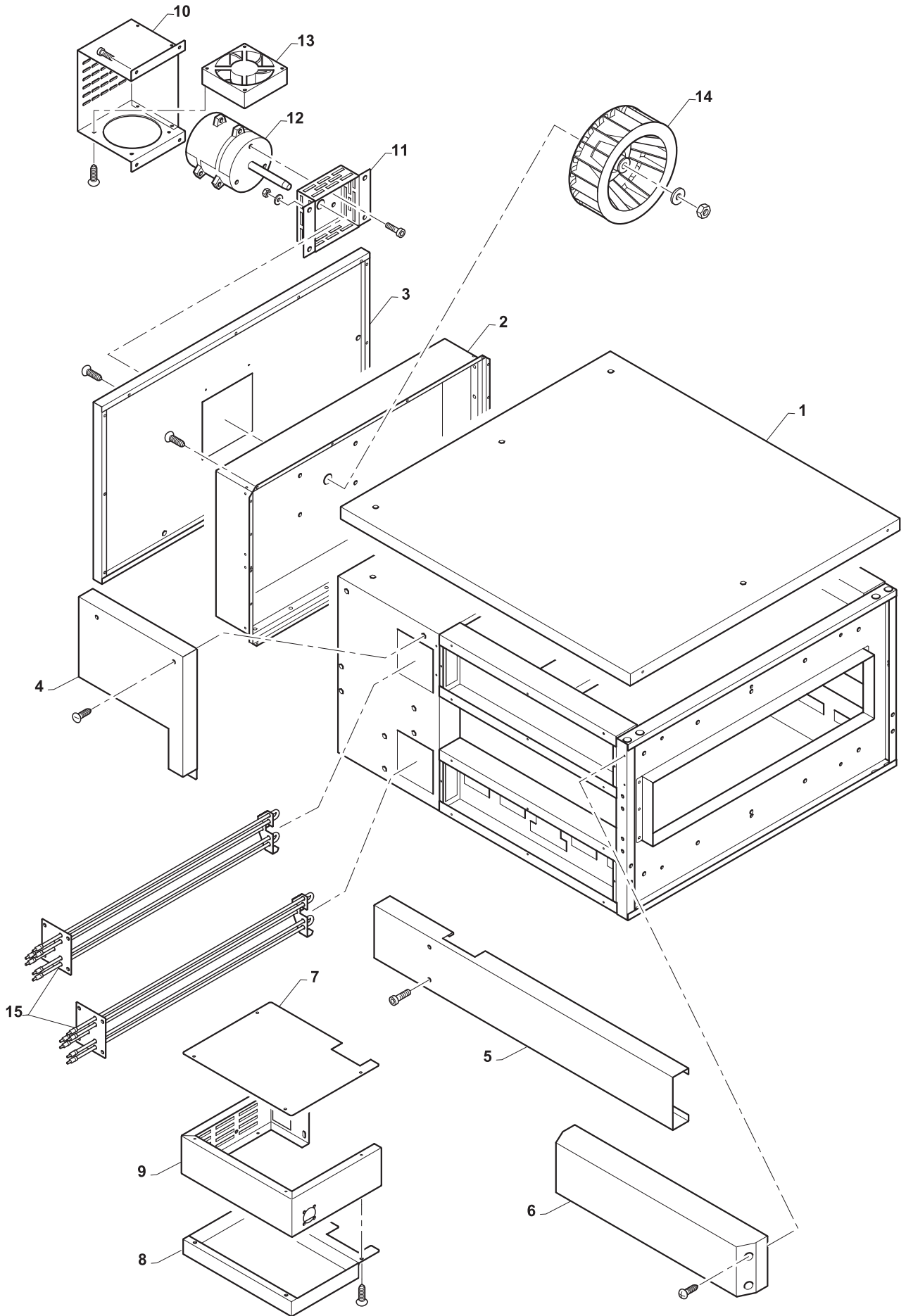
Descrizione.....
Description
Désignation
Beschreibung
Descripción

n° Figura.....
Figure No.
N° de figure
Abb. Nr.
N° Figura

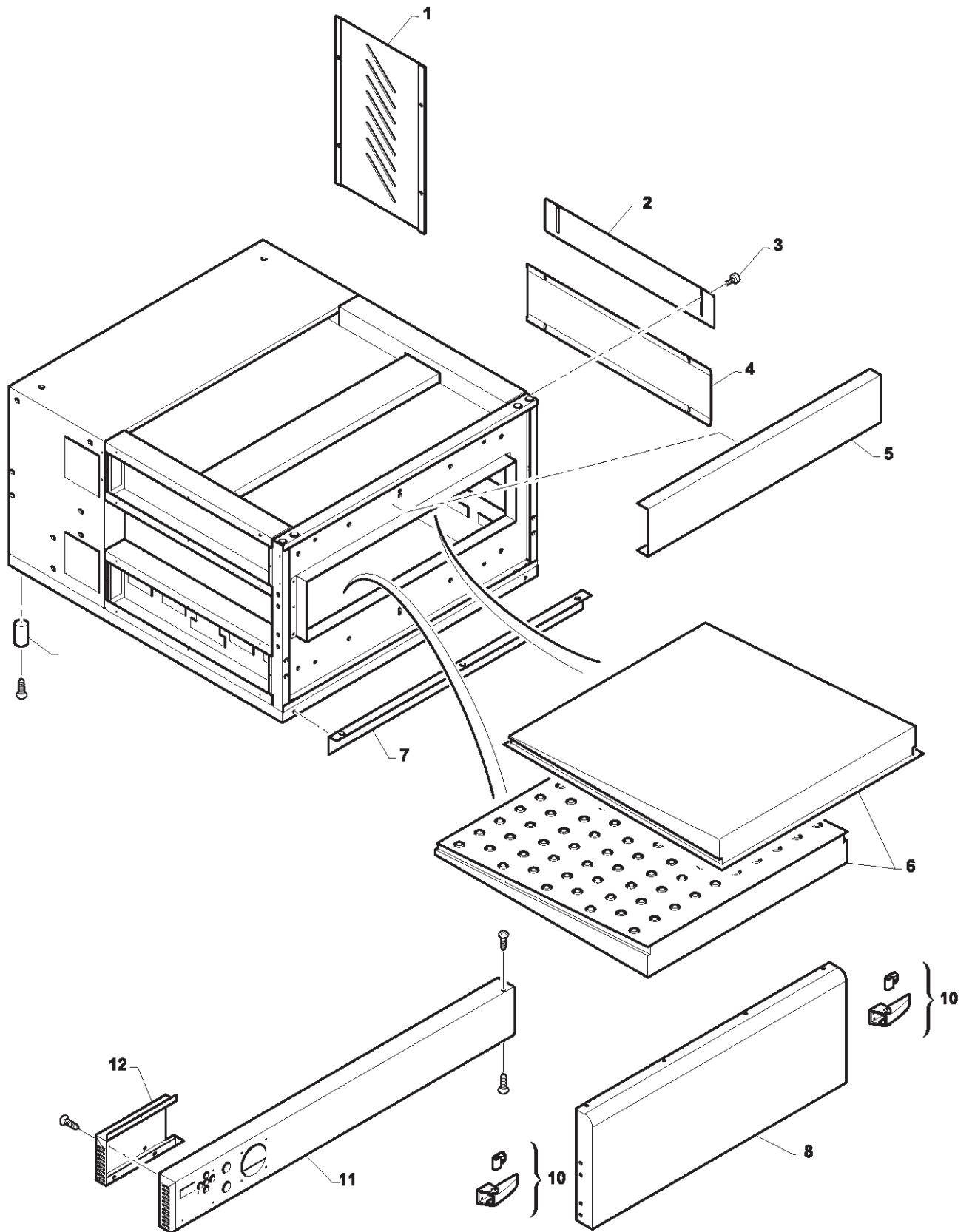
Pos.	Cod.	Descr.	Pos.	Cod.	Descr.
1	W8P3600	Copertura superiore	1	W8P3600	Copertura superiore
2	W8P3600	Supporto	2	W8P3600	Supporto
3	W8P3600	Motor	3	W8P3600	Motor
4	W8P3600	Panel	4	W8P3600	Panel
5	W8P3600	Panel	5	W8P3600	Panel
6	W8P3600	Panel	6	W8P3600	Panel
7	W8P3600	Panel	7	W8P3600	Panel
8	W8P3600	Panel	8	W8P3600	Panel
9	W8P3600	Panel	9	W8P3600	Panel
10	W8P3600	Panel	10	W8P3600	Panel
11	W8P3600	Panel	11	W8P3600	Panel
12	W8P3600	Panel	12	W8P3600	Panel
13	W8P3600	Panel	13	W8P3600	Panel
14	W8P3600	Panel	14	W8P3600	Panel
15	W8P3600	Panel	15	W8P3600	Panel



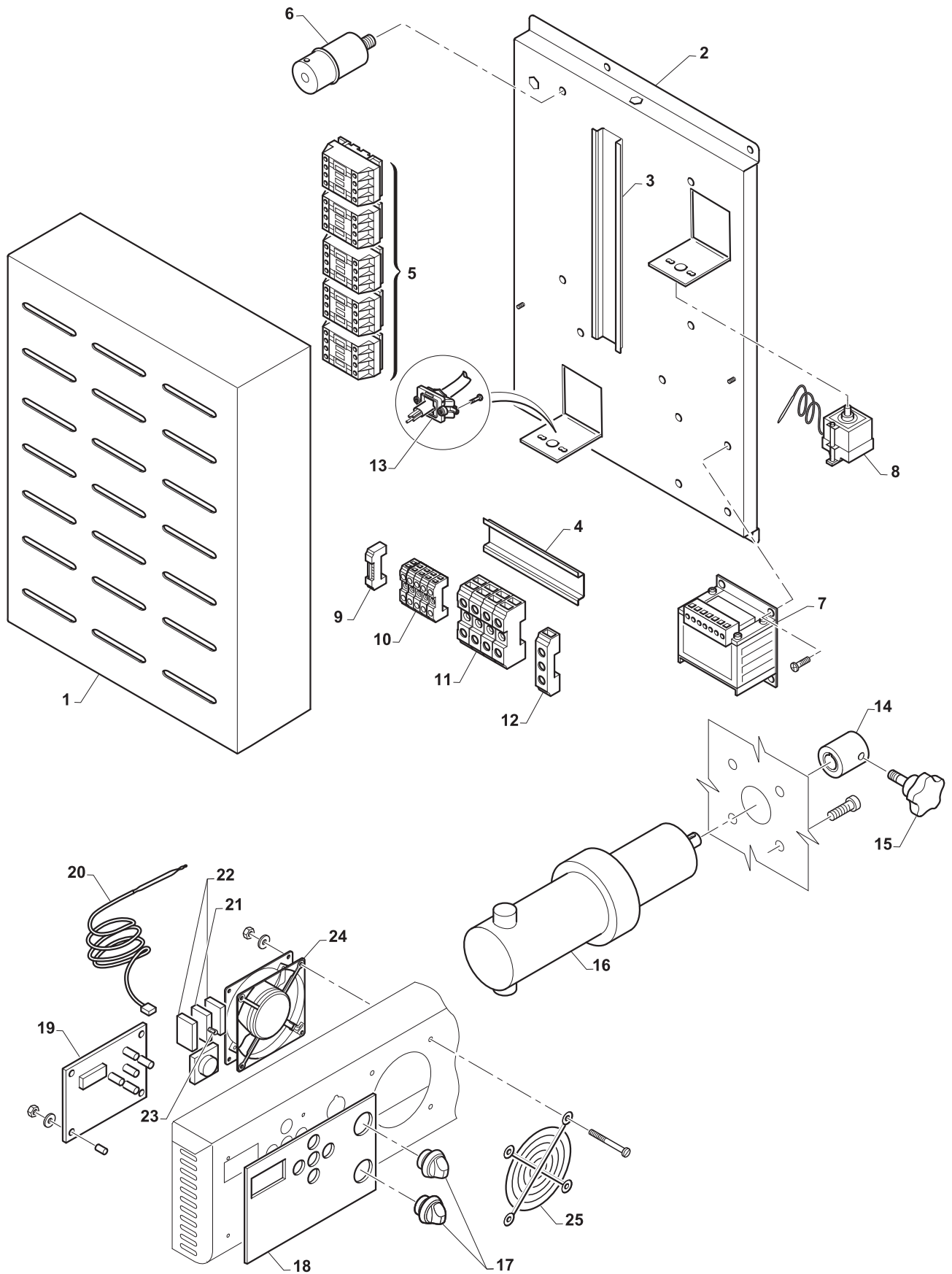
Pos.	Cod.	Q.tà	ITA	GB	F	D	E	NOTE
1	W8P86R0	1	Coperchio	Cover	Couvercle	Deckel	Tapa	
2	W8P0410	1	Pannello	Panel	Panneau	Schalttafel	Panel	
3	W8P3200	1	Schienale	Back	Dossier	Rueckenlehne	Respaldo	
4	W8P2800	1	Pannello	Panel	Panneau	Schalttafel	Panel	
5	W8P2900	1	Copertura	Cover	Couverture	Deck el	Cobertura	
6	W8P4600	2	Cappa	Hood	Hotte	Kappe	Campana	
7	W8P3600	1	Copertura superiore	Upper cover	Couverture supérieure	Obere Abdeckung	Cubierta superior	
8	W8P3700	1	Copertura inferiore	Cover	Couverture	Deck el	Cobertura	
9	W8P2700	1	Supporto	Support	Support	Halterung	Soporte	
10	W8P5200	1	Copertura	Cover	Couverture	Deck el	Cobertura	
11	W8P0500	1	Supporto	Support	Support	Halterung	Soporte	
12	ES35400	1	Motore	Motor	Moteur	Motor	Motor	
13	ES22700	1	Ventola	Blower	Sufflerie	Geblaese	Pantalla	120x120x38
14	ES28500	1	Ventola	Blower	Sufflerie	Geblaese	Pantalla	D.220x78
15	EE29000	2	Resistenza	Resistor	Resistance	Widerstand	Resistencia	



Pos.	Cod.	Q.tà	ITA	GB	F	D	E	NOTE
1	W8P3000	1	Protezione	Shield	Protection	Abdeckung	Defensa	
2	W8P4700	2	Riduzione bocca	Oven hole reduction	Réduction de la bouche	Öffnungsreduktion	Reducción boca	
3	QST0320	4	Volantino	Hand wheel	Volant à main	Handrad	Volante	
4	W8P3800	1	Copertura	Cover	Couverture	Deck el	Cobertura	
5	W8P7210	1	Copertura	Cover	Couverture	Deck el	Cobertura	
6	W8F0700	2	Complessivo convogliatore	Conveyor belt overall view	Vue d'ensemble du convoyeur	Gesamtansicht des Förderbands	Conjunto transportador	
7	W8P4400	1	Angolare	Angle piece	Encoignure	Eckingstueck	Esquina	
8	W8P87R0	1	Complessivo porta	Door whole	Groupe	Türgesamtheit	Conjunto puerta	
9	W8P6300	2	Cerniera	Hinge	Charniere	Scharnier	Bisagra	
10	W8P6500	1	Chiusura	Closing	Fermeture	Verschluss	Cierre	
11	W8P9200	1	Pannello comandi	Control board	Panneau de contrôle	Schalttafel	Panel de mandos	
12	W8P3500	1	Copertura	Cover	Couverture	Deck el	Cobertura	
13	AD29800	4	Piedino	Stand	Pied de support	Stützfuß	Pata de apoyo	



Pos.	Cod.	Q.tà	ITA	GB	F	D	E	NOTE
1	W8P3420	1	Copertura	Cover	Couverture	Deck el	Coertura	
2	W8P3300	1	Supporto	Support	Support	Halterung	Soporte	
3	A2A0710	1	Barra omega	Omega bar	Barre omega	Omega-Stab	Barra omega	
4	A111510	1	Barra omega	Omega bar	Barre omega	Omega-Stab	Barra omeg	
5	EN08200	5	Teleruttore	Remote switch	Contacteur	Schutz	Teleruptor	BF.9.10
6	EM02700	1	Condensatore	Condenser	Condensateur	Kondensator	Vierteaguas	
7	EH04600	1	Trasformatore	Transformer	Transformateur	Wandler	Transformador	100VA 400/12-24V
8	ED02300	1	Termostato di sicurezza	Thermostat	Thermostat	Thermostat	Termostato	
9	EP00400	1	Staffa	Bracket	Etrier	Halter	Soporte	
10	EP00200	5	Morsetto	Terminal	Borne	Klemme	Borne	4mmq
11	EP00900	4	Morsetto	Terminal	Borne	Klemme	Borne	10mmq
12	EP07100	1	Morsetto terra	Terminal	Borne	Klemme	Borne	10mmq
13	AD00600	1	Pressacavo+viti element+screws	Cable pressing	Pressecâble+vis	Kabelpresselement +Schrauben	Sujetacable+tornillos	
14	KF17720	1	Giunto	Coupling	Accplement	Gelenk	Arrastre	
15	AC15100	1	Volantino	Hand wheel	Volant à main	Handrad	Volante	
16	KD14200	1	Motoriduttore	Motorreduction gear	Motoreducteur	Motor-	Moto-reductor	
17	EH06200	2	Selettore	Selector	Sélecteur	Wählschalter	Selector	A 3P
18	AM49900	1	Targa	Nameplate	Plaque	Namensschild	Chapa	
19	HE21300	1	Scheda	Card	Fiche	Schalttafel	Ficha	
20	ED10500	1	Termoresistenza	Thermoresistance	Thermo-résistance	Thermowiderstand	Termo-resistencia	
21	50MAA78014	2	Adattatore	Adapter	Adaptateur	Adapter	Adaptador	
22	50MAA78015	4	Contatto NA	NA Contact	Contact NA	Kontakt NA	Contacto NA	
23	EF11400	2	Led	Led	Led	Led	Led	V.230
24	ES36200	1	Ventola	Blower	Sufflerie	Geblaese	Pantalla	
25	ES35200	1	Griglia	Grille	Grille	Kuehlergitter	Calandra	



Pos.	Cod.	Q.tà	ITA	GB	F	D	E	NOTE
1	AL33800	1	Nastro	Tape	Bande isolante	Isolierband	Cinta adhesiva	
2	KF17520	1	Albero condotto	Driven shaft	Arbre conduit	Abtriebswelle	Eje secundario	
3	KF17620	1	Albero trasmissione	Drive shaft	Arbre de transmission	Antriebswelle	Eje de transmission	
4	KF17820	4	Pignone	Pinion	Pignon	Ritzel	Pinon	
5	AD29500	12	Puleggia	Pulley	Poulie	Rolle	Polea	
6	KE30100	2	Supporto	Support	Support	Halterung	Soporte	
7	KE30400	1	Calotta chiusa	Cap closed	Calotte fermée	Kappe zu	Casquete cerrado	
8	W8P4000	2	Lamiera	Sheet	Toile	Blech	Retenedor	
9	W8P2110	1	Supporto nastro	Support	Support	Halterung	Soporte	
10	AC03000	4	Volantino	Hand wheel	Volant à main	Handrad	Volante	
11	W8P7510	1	Scivolo uscita	Outlet chute	Glissière de sortie	Ausgangsruutsche	Rampa salida	
12	W8P7610	1	Kit scivolo uscita	Outlet chute set	Jeu de la glissière de sortie	Ausgangsruutschensatz	Juego rampa salida	Optional
13	W8P6600	1	Telaio rullo	Roll frame	Châssis du rouleau	Rollenrahmen	Armazón rodillo	
14	KF17900	2	Rullo	Roller	Galet	Rolle	Tuerca	
15	W8P7400	1	Supporto	Support	Support	Halterung	Soporte	
16	W8P7010	1/2	Kit rulliera	Roll set	Jeu du transporteur à rouleaux	Rollensatz	Juego transportador de rodillos	Optional

