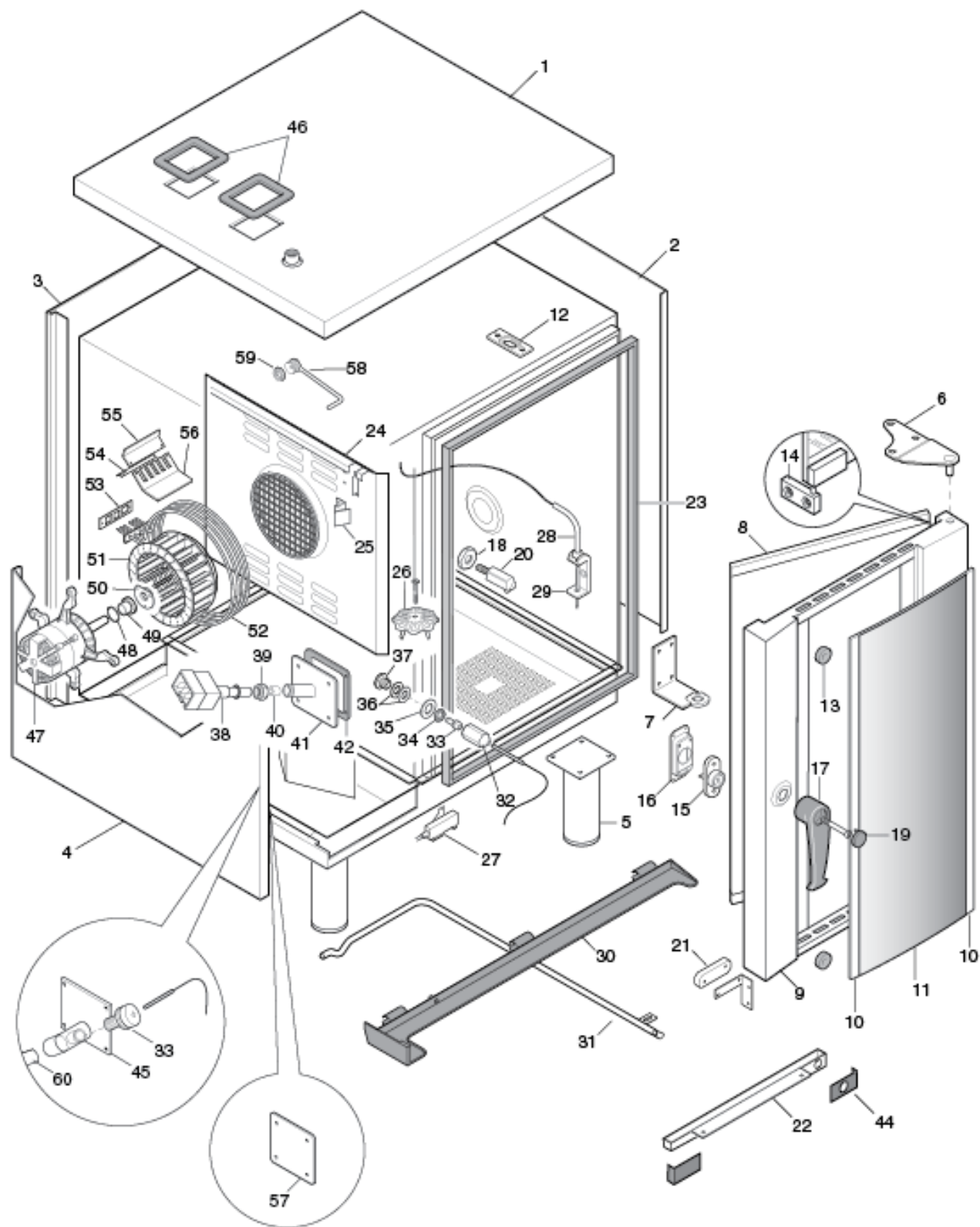


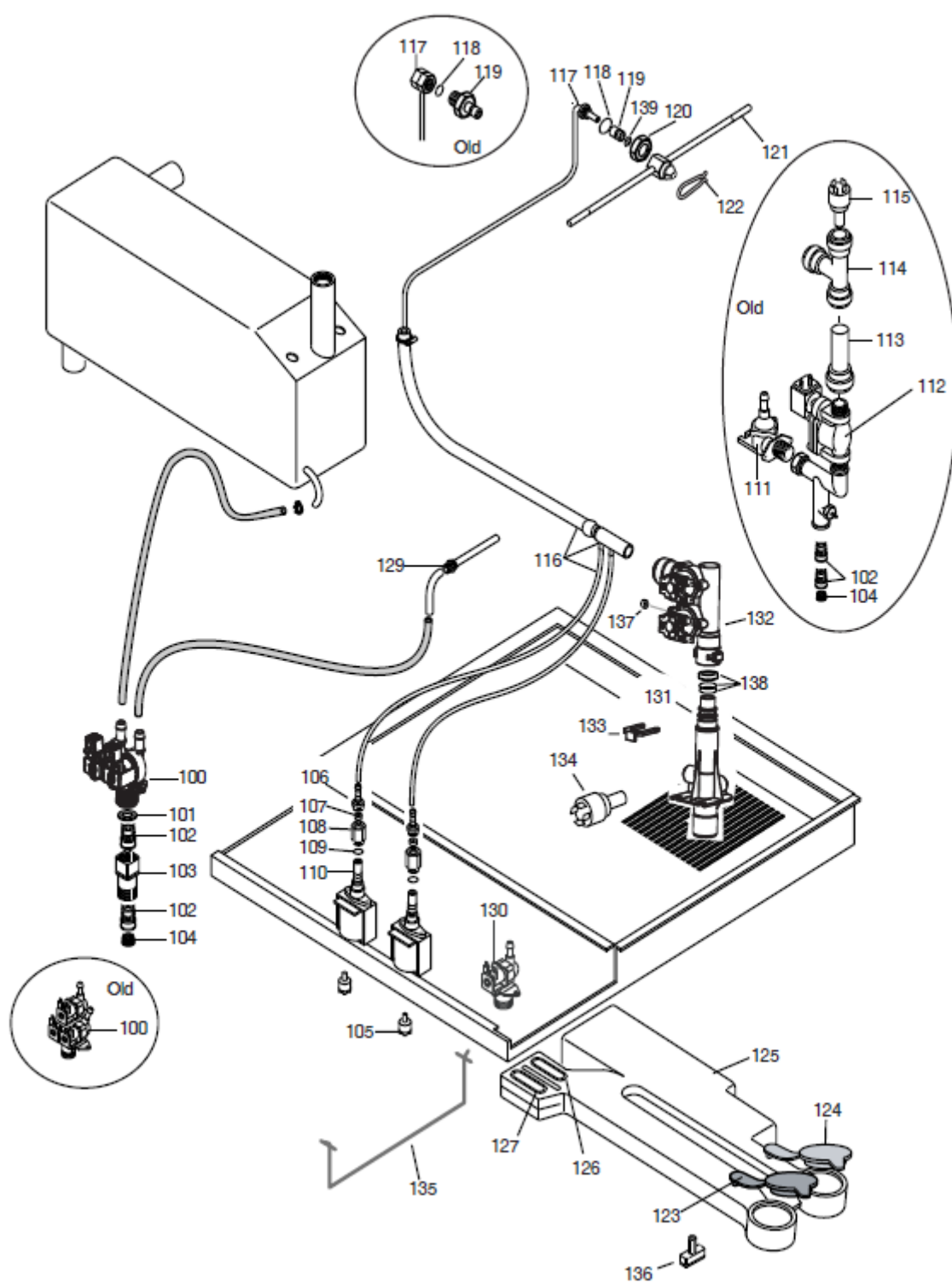
10 GN 1/1 ELECTRIC STEAM - CONVECTION OVEN
FORNO CONVEZIONE- VAPORE ELETTRICO 10 GN 1/1

PNC	Model	Ref.	Page	NOTES
267002	AOS101EAA1	a	2...13	Level/Livello A
267012	AOS101EAH1	g	2...13	Level/Livello A
267022	AOS101EAN1	c	2...13	Level/Livello A
267032	AOS101EAC1	e	2...13	Level/Livello A
267042	AOS101EAE1	n	2...13	Level/Livello A
267052	AOS101EAF1	p	2...13	Level/Livello A
267082	AOS101EAM1	t	2...13	Level/Livello A
267092	AOS101EAB1	u	2...13	Level/Livello A
267102	AOS101EAK1	r	2...13	Level/Livello A
268002	AOS101EBA1	b	2...13	Level/Livello B
268012	AOS101EBH1	h	2...13	Level/Livello B
268022	AOS101EBN1	d	2...13	Level/Livello B
268032	AOS101EBC1	f	2...13	Level/Livello B
268042	AOS101EBE1	o	2...13	Level/Livello B
268052	AOS101EBF1	q	2...13	Level/Livello B
268102	AOS101EBK1	s	2...13	Level/Livello B
269002	AOS101ECA1	i	2...13	Level/Livello C
269012	AOS101ECH1	l	2...13	Level/Livello C
269022	AOS101ECN1	m	2...13	Level/Livello C

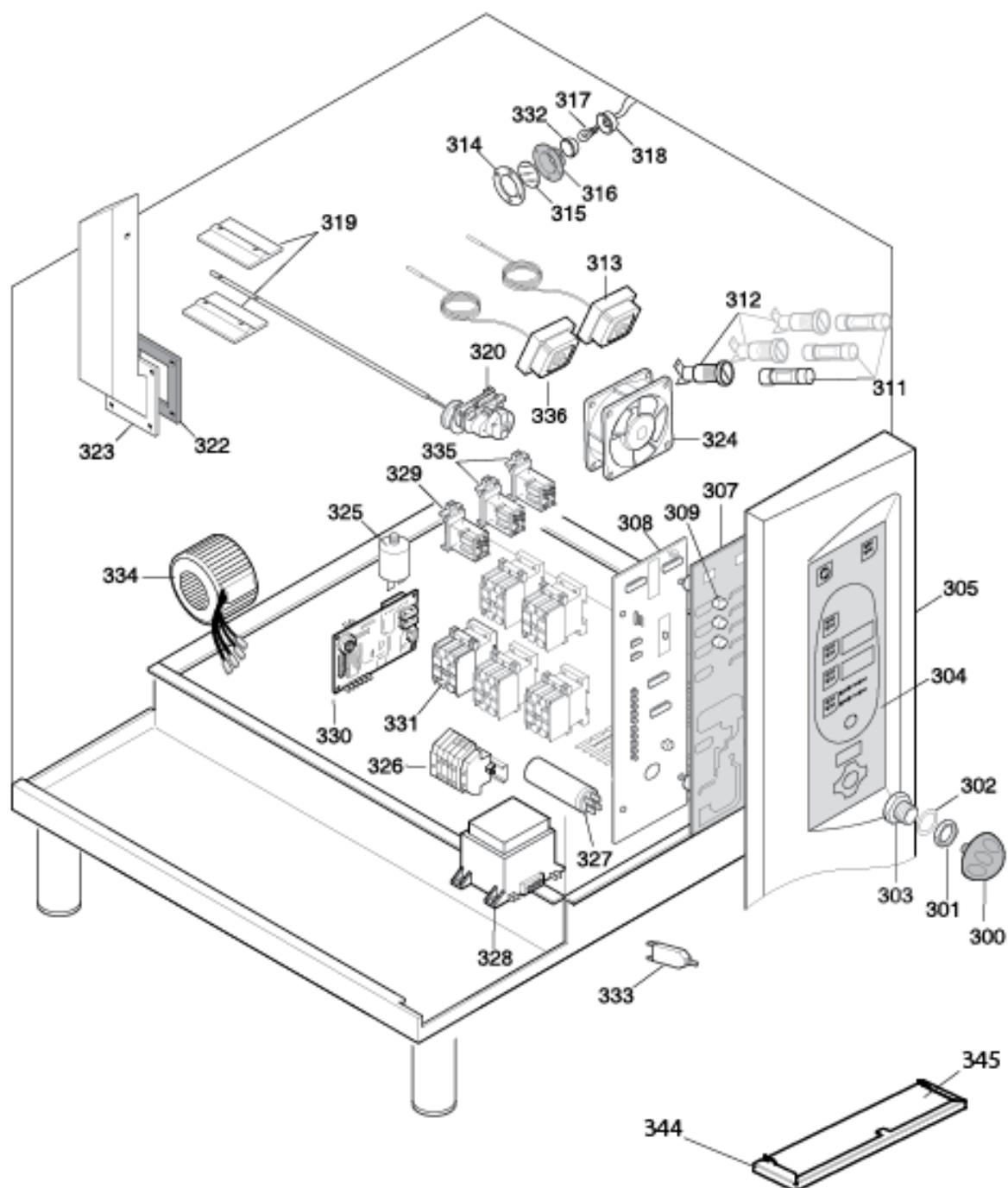
Pag	Index	Indice
2	Oven cabinet and door	Cella forno e porta
3	Water system	Impianto idraulico
4	Boiler	Boiler
5	Electrical components	Componenti elettrici
6	Tray support	Struttura portateglie
7-13	Spare parts list	Lista ricambi

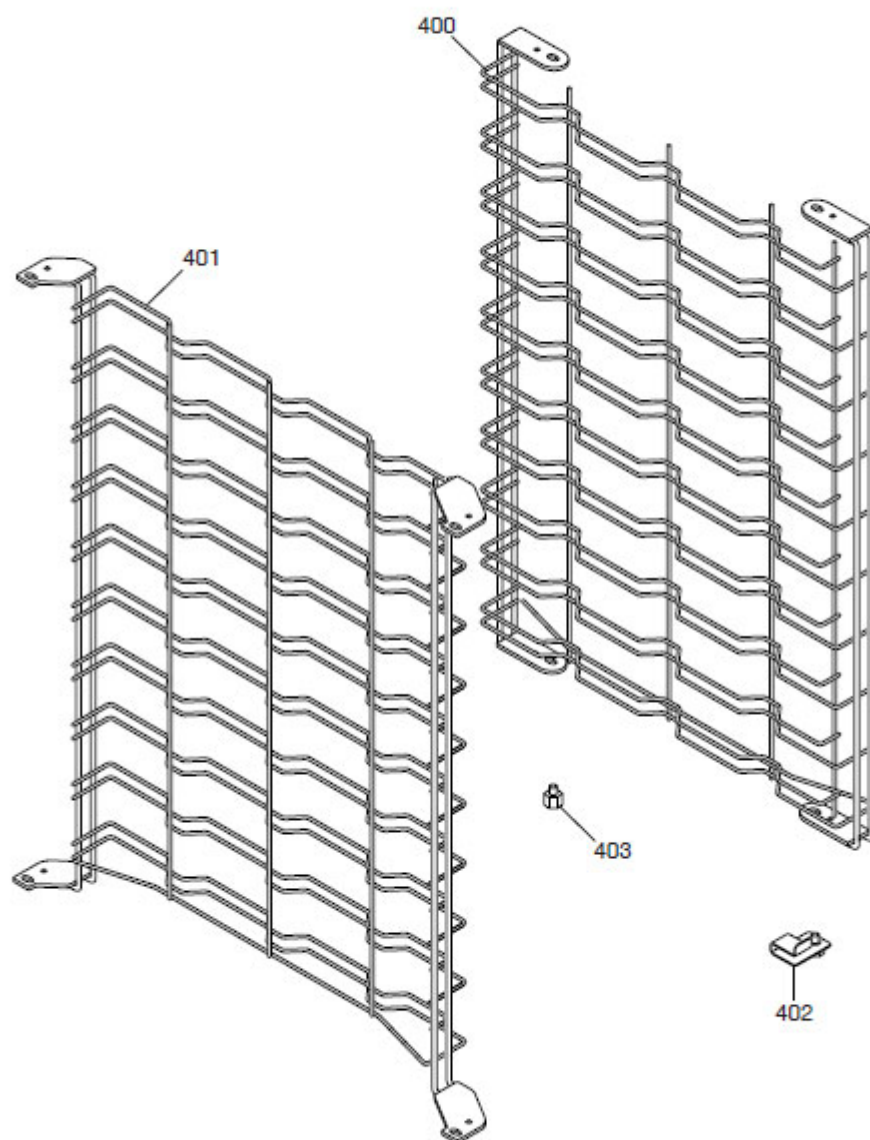
Brand/Marchio: Electrolux
Factory code: 9PDD











10 Gn 1/1 Electric steam - convection oven Forno convezione - vapore elettrico 10 Gn 1/1					
Pos	Factory Code	6DGT Code	Descrizione	Description	Ref./Note
			Pagina 2	Page 2	
1	0590831300	0C6177	COPERCHIO	COVER	Da/from 05
1	0873871102	0C4231	COPERCHIO	COVER	Until UP 04
2	0530890900	0C6174	FIANCO DX	RIGHT SIDE PANEL	Da/from 05
2	0870863302	0C4232	FIANCO DX	RIGHT SIDE PANEL	Until UP 04
3	0530892700	0C6190	SCHIENALE	BACK PANEL	Da/from 05
3	0522845504	0C4084	SCHIENALE	BACK PANEL	Until UP 04
4	0530893300	0C6196	FIANCO SX	LEFT SIDE PANEL	Da/from 05
4	0522854900	0C1079	FIANCO SX	LEFT SIDE PANEL	Until UP 04
5	0831850900	0C4892	PIEDINO	FOOT	a,..., m, r, s, t, u
5	0806872300	0C4823	PIEDINO	FOOT	n, o, p, q
6	0806847803	0C4234	CERNIERA SUPERIORE	UPPER HINGE	
7	0806861600	0C4235	CERNIERA INFERIORE	LOWER HIGE	
8	0873869902	0C4470	VETRO INTERNO	INNER GLASS	
9	0873858407	0C4960	PORTA COMPLETA	COMPLETE DOOR	
10	0806859302	0C4476	PROFILO DX-SX	RIGHT AND LEFT TRIM	
11	0574817103	0C4471	VETRO ESTERNO	EXTERNAL GLASS	
12	0543839700	0C4088	GUARNIZIONE FLANGIA SPILLONE	GASKET	
13	0543828001	006976	AMMORTIZZATORE	DAMPER	
14	0806822000	007007	CERNIERA VETRO INTERNO	HINGE, INNER GLASS	
15	0835871801	0C4089	GR.CHIUSURA A SCATTO 'HRS'	CLOSING MECHANISM	
16	0510824200	0C4237	SUPPORTO GR.CHIUSURA	SUPPORTO	
17	0548871500	0C4090	MANIGLIA CHIUSURA A SCATTO 'HRS'	DOOR HANDLE	
18	0516896400	0C4238	DADO FISSAGGIO	NUT FOR DOOR CATCHER	
19	0546822600	0C4091	TAPPO PER MANIGLIA 'HRS'	DOOR COVER HANDLE	
20	0806859900	0C4092	NASELLO	DOOR CATCHER	
21	0699603700	049627	MAGNETE	MAGNET	
22	0528869501	0C4239	VASCHETTA RACC. CONDENSA	DOOR DRAIN TRAY	
23	0831846901	0C1477	GUARNIZIONE CELLA-PORTA LW 10	GASKET	
24	0830892205	0C4619	PARETE DI ASPIRAZIONE	SUCTION WALL	
25	0518807301	0C3423	MOLLA AGGANCIAMENTO PARETE	SPRING	
26	0518808600	0C1740	FILTRO FONDO	FILTER	
27	0654600000	049621	INTERRUTTORE MAGNETICO	MAGNETIC SWITCH	
28	0831831000	0C4240	SPILLONE CURVO MULTIPOINT	MEAT PROBE MULTI POINT	a, c, e, g, r, t, u
28	0831830700	0C4241	SPILLONE CURVO SINGOLO PUNTO	MEAT PROBE SINGLE POINT	b, d, f, h, i, l, m, o, q, s
29	0527865201	0C1505	SUPPORTO SPILLONE	MEAT PROBE SUPPORT	
30	0856814000	0C4242	BACINELLA SNODABILE	DRAIN TRAY	
31	0806858800	0C4243	TUBO PER CONDENSA 1/1	DRAIN TUBE	
32	0516855300	006991	DADO SONDA CELLA	NUT, CAVITY PROBE	

10 Gn 1/1 Electric steam - convection oven Forno convezione - vapore elettrico 10 Gn 1/1					
Pos	Factory Code	6DGT Code	Descrizione	Description	Ref./Note
33	0543842600	0C4872	TAPPO PER SENSORE	STOPPER FOR SENSOR	b, d, f, h, s
34	0214105101	020997	CONTRODADO PORTAUGELLO	LOCK NUT	
35	0508838701	002700	RONDELLA TENUTA Sonda CELLA	WASHER	
36	0543816300	002624	GUARNIZIONE PER TENUTA SONDA	GASKET	
37	0516809400	002623	RACCORDO Sonda CELLA	CONNECTION, CAVITY PROBE	a, c, e, g, n, p, r, t, u
38	0830891200	006995	SONDA LAMBDA	LAMBDA PROBE	
39	0214111412	050670	DADO M 20 X 1,5	NUT	
40	0215170716	050682	OGIVA DA 12	OGIVA	
41	0806857201	0C4244	COND. FLANGIATO Sonda LAMBDA	FLANGE TUBE	a, c, e, g, n, p, r, t, u
42	0543838300	0C4093	GUARNIZIONE SUP. BYPASS/LAMBDA	GASKET	
44	0543841300	0C4094	GUARN. VASC. CONDENSA PORTE	GASKET	
45	0806873000	0C6351	CONDOTTO FLANGIATO BY- PASS	DUCT, BYPASS PROBE	
46	0543828901	007005	GUARN. CONDOTTO ARIA-	GASKET, DUCT	a, ..., h, n, o, p, q, r, s
47	0611806001	006998	MOTORE	MOTOR	
47	0611809000	0C5287	MOTORE	MOTOR	
47	0611807300	0C1474	MOTORE	MOTOR	
48	0543816700	002873	O RING	O RING	i, l, m t, u
49	0516808902	002699	CUSCINETTO	BEARING	
50	0538815400	0C4138	FLANGIA FISS. TENUTA MOTORE	FLANGE	
51	0831808400	0C1129	VENTOLA	FAN	
52	0617823801	007064	RESISTENZA (5.6 kW/400V)	HEATING ELEMENT (5.6 kW/400V)	a, b, g, h, i, l, m, p, q, r, s
52	0617826900	007066	RESISTENZA (5.6 kW/230V)	HEATING ELEMENT (5.6 kW/230V)	c, d, m
52	0617826800	007065	RESISTENZA (5.6 kW/200V)	HEATING ELEMENT (5.6 kW/200V)	e, f
52	0617827000	0C1936	RESISTENZA (5,6 kW/440V)	HEATING ELEMENT (5,6 kW/440V)	n, o
52	0617829200	0C1396	RESISTENZA (5,5 kW/208V USA)	HEAT. ELEMENT (5,5 kW/208V USA)	t
52	0617829800	0C1500	RESISTENZA (5,5 kW/240 V USA)	HEAT. ELEMENT (5,5 kW/240V USA)	u
53	0543816501	002689	GUARNIZIONE RESISTENZE CELLA	GASKET, CAVITY HEATING ELEMENT	i, l, m
54	0503897402	006253	ANGOLARE RESISTENZE	SUPPORT	
55	0503891801	006256	LAMA FISSAGGIO RESISTENZE	SUPPORT	
56	0527833700	0C3830	SUPPORTO RESISTENZE	SUPPORT	
57	0527898900	0C4857	PIASTRA CHIUSURA	FLANGE	i, l, m
58	0856828400	0C4975	CONDOTTO UMIDIFICATORE	HUMIDIFIER PIPNG	
59	0516887101	0C6228	DADO CONDOTTO	NUT HUMIDIFIER	i, l, m
60	0140068010	006248	TUBO IN SILICONE DIA26X20	SILICONE TUBE	

10 Gn 1/1 Electric steam - convection oven Forno convezione - vapore elettrico 10 Gn 1/1					
Pos	Factory Code	6DGT Code	Descrizione	Description	Ref./Note
100	0696805600	0C1934	Pagina 3 ELETTROVALVOLA 3 VIE	Page 3 WATER VALVE 3 WAYS	a....h, n, o, p, q, r, s, t, u
100	0696808300	0C5516	ELETTROVALVOLA 2 VIE	WATER VALVE 2 WAYS	a....h, n, o, p, q, r, s, t, u
101	0543840600	0C4096	GUARNIZIO NE FILTRO REFLEX 9052	GASKET	
102	0549801800	0C2312	VALVOLA NON RITORNO	NOT RE-FLOW VALVE	
103	0516879400	0C2313	RACCORDO ENTRATA ACQUA	PIPE FITTING	a...h, n, o, p, q, r, s, t, u
105	0831811400	0C1155	ASSIEME FILTRO	FILTER	a, c, e, g, i, l, m, n, p, r, s, t, u
106	0516896101	0C4198	RACCORDO PORTAGOMMA	PIPE FITTING	a, c, e, g, i, l, m, n, p, r, s, t, u
107	0544809000	0C1117	VALVOLA NON RITORNO	NOT-REFLOW VALVE	a, c, e, g, i, l, m, n, p, r, s, t, u
108	0516871900	0C1116	RACCORDO PER POMPA	PUMP CONNECTION	a, c, e, g, i, l, m, n, p, r, s, t, u
109	0543832300	0C1935	O . RING	O RING	a, c, e, g, i, l, m, n, p, r, s, t, u
110	0680801201	0C2341	POMPA	PUMP	a, c, e, g, i, l, m, n, p, r, s
110	0680801301	0C2342	POMPA	PUMP	t, u
111	0696805500	0C1933	ELETTROVALVOLA	WATER VALVE	a...h, n, o, p, q, r, s, t, u (until UP. 04)
112	0696804700	0C1148	ELETTROVALVOLA	WATER VALVE	a, c, e, g, i, l, m, n, p, r, s, t (until UP. 04)
113	0544808600	0C1149	TERMINALE A CODOLO PM0515	CONNECTION, CS	a, c, e, g, i, l, m, n, p, r, s, t (until UP. 04)
114	0544808500	0C1124	INTERMEDIO A T PM0215E JG	CONNECTION, CS	a, c, e, g, i, l, m, n, p, r, s, t (until UP. 04)
115	0646813000	0C1126	PRESSOSTATO ATTACCO RAPID	CONNECTION FOR WASH ARM	a, c, e, g, i, l, m, n, p, r, s, t (until UP. 04)
116	0806864300	0C4246	ASSIEME COLLETORE LAVAGGIO	CONNECTION, CS	a, c, e, g, i, l, m, n, p, r, s, t
117	0806818201	007009	ASS. SUPPORTO ATTACCO GETTO L.	SUPPORT	a, c, e, g, i, l, m, n, p, r, s, t (until UP. 04)
117	0806871100	0C6031	ASS. SUPPORTO ATTACCO GETTO L.	SUPPORT	a, c, e, g, i, l, m, n, p, r, s, t, u
118	0543828300	007074	ANELLO DI TENUTA	O R	a, c, e, g, i, l, m, n, p, r, s, t, u (until UP. 04)
118	0543841400	0C4201	ANELLO DI TENUTA	O R	a, c, e, g, i, l, m, n, p, r, s, t
119	0805400000		ATTACCO PER GETTO	CONNECTION FO R WASH ARM	a, c, e, g, i, l, m, n, p, r, s, t, u (until UP. 04)
119	0516898301	0C4467	ATTACCO PER GETTO	CONNECTION FO R WASH ARM	a, c, e, g, i, l, m, n, p, r, s, t
120	0516896000	0C4202	DADO	NUT	a, c, e, g, i, l, m, n, p, r, s, t, u
121	0806823100	007010	GETTO ROTANTE	ROTATING WASHING JET	a, c, e, g, i, l, m, n, p, r, s, t, u
122	0518807100	007026	MOLLA	SPRING	a, c, e, g, i, l, m, n, p, r, s, t, u
123	0544808100	0C1151	TAPPO PER SERBATOIO BLU	BLUE CUP	a, c, e, g, i, l, m, n, p, r, s, t, u
124	0544808200	0C1152	TAPPO PER SERBATOIO ROSSO	RED CUP	a, c, e, g, i, l, m, n, p, r, s, t, u
125	0873857102	0C4426	SERBATOIO DETERGENTE-BRIL	TANK	a, c, e, g, i, l, m, n, p, r, s, t
126	0544808900	0C1154	PARATIA PER SERBATOIO	RED BULKHEAD	a, c, e, g, i, l, m, n, p, r,

10 Gn 1/1 Electric steam - convection oven Forno convezione - vapore elettrico 10 Gn 1/1					
Pos	Factory Code	6DGT Code	Descrizione	Description	Ref./Note
127	0544808400	0C1153	ROSSO PARATIA PER SERBATOIO BLU	BLUE BULKHEAD	s, t, u a, c, e, g, i, l, m, n, p, r, s, t, u
128	0806869800		TUBO CARICO BOILER	PIPING BOILER	
129	0H22982600	007012	TUBO UMIDIFICATORE	HUMIDIFIER PIPE	a....h, n, o, p, q, r, s, t, u
129	0856828600	0C4977	TUBO UMIDIFICATORE	HUMIDIFIER PIPE	i, l, m
130	0696808200	0C5515	ELETTROVALVOLA	WATER VALVE	i, l, m
130	0696805700	0C3254	ELETTROVALVOLA	WATER VALVE	b, d, f, h, o, q, s
131	0831857200	0C6370	ASSIEME COLLETTORE LAVAGGIO	CONNECTION,C.S	a, c, e, g, i, l, m, n, p, r, s, t, u
132	0696808600	0C6374	GRUPPO VALVOLE CLEANING	VALVE GROUP C.S.	a, c, e, g, n, p, r, s
132	0696400100	0C6373	GRUPPO VALVOLE CLEANING	VALVE GROUP C.S.	t, u
132	0696400300	0C6406	GRUPPO VALVOLE CLEANING	VALVE GROUP C.S.	i, l, m
133	0546825100	0C6222	FORCELLA SICUREZZA	CLIP	a, c, e, g, i, l, m, n, p, r, s, t, u
134	0646817200	0C6217	PRESSOSTATO ATTACCO RAPID	CONNECTION FOR WASH ARM	a, c, e, g, i, l, m, n, p, r, s, t, u
135	051380500	0C5426	STAFFA SUPPORTO SERBATOIO	SUPPORT PLATE	a, c, e, g, i, l, m, n, p, r, s, t, u
136	0546824100	0C6201	GANCIO SERBATOIO	HOOK	a, c, e, g, i, l, m, n, p, r, s, t, u
137	-	0C6375	KIT RIDUTTORI DI PORTATA	WATER FLOW REDUCERS KIT	a, c, e, g, i, l, m, n, p, r, s, t, u
138	-	0C6377	KIT OR + BUSSOLA	O-RING +BUSH KIT	a, c, e, g, i, l, m, n, p, r, s, t, u
139	0219035015	061303	ANELLO ELASTICO	ELASTIC RING	a, c, e, f, g
			Pagina 4	Page 4	
200	0831841100	0C4139	ASSIEME BOILER	BOILER ASS.Y	a....h, n, o, p, q, t, u
200	0831854700	0C5848	ASSIEME BOILER	BOILER ASS.Y	a....h, n, o, p, q, t, u (see code 216)
200	0831851800	0C5024	ASSIEME BOILER	BOILER ASS.Y	r, s
200	0831855500	0C5851	ASSIEME BOILER	BOILER ASS.Y	r, s (from s/n/ 832...)
201	0560855300	0C4109	KIT ISOLAMENTO	KIT INSULATION	a....h, n, o, p, q, t, u (see code 216)
201	0560856200	0C5059	KIT ISOLAMENTO	KIT INSULATION	r, s
201	0560806900	0C5836	KIT ISOLAMENTO	KIT INSULATION	(see code 200)
202	0543816601	002692	TAPPO	STOPPER	a....h, n, o, p, q, r, s, t, u
203	0543817500	002634	GOMMINO	GASKET	a....h, n, o, p, q, r, s, t, u
203	0543843201	0C4965	GOMMINO	GASKET	i, l, m
204	0830890500	007033	SONDA DI LIVELLO	LEVEL PROBE	a....h, n, o, p, q, r, s, t, u
205	0516809501	007117	RACCORDO	CONNECTION	a....h, n, o, p, q, r, s, t, u
206	0696804201	0C0882	VALVOLA DI SCARICO	DRAIN VALVE	a....h, n, o, p, q, r, s, t, u
207	0511820300	0C3847	MANICOTTO 1"-3/4"	CONNECTION 1"-3/4"	a....h, n, o, p, q, r, s, t, u
208	0516872000	0C1626	RESCA D12 FILETT 1/4' GAS	PIPE CONNECTION	a....h, n, o, p, q, r, s, t, u
209	0516879600	0C4099	UGELLO 'ELPIS'1/4'FD3.5- 3/8'M	NOZZLE	a....h, n, o, p, q, r, s, t, u
210	0543842600	0C4872	TAPPO PER SENSORE	STOPPER FOR SENSOR	a, c, e, g, n, p, r, t, u
211	0527898700	0C4856	FLANGIA CHIUSURA FORO BOILER	FLANGE	i, l, m
212	0543842800	0C4963	GUARN. CHIUSURA FORO BOILER	GASKET	i, l, m
213	0546815103	0C4532	PANNELLO FRONTALE INFERIORE	PANNEL	a, c, e, g, n, p, r, t, u
214	0873881200	0C4248	DOCCEtta MINIREEL KLARCO AOSQ	SHOWER	a, c, e, g, n, p, r, t, u
215	0543828800	007029	GUARNIZIONE BOILER	GASKET BOILER	a....h, n, o, p, q, r, s, t, u

10 Gn 1/1 Electric steam - convection oven Forno convezione - vapore elettrico 10 Gn 1/1					
Pos	Factory Code	6DGT Code	Descrizione	Description	Ref./Note
215	0543844800	0C5834	GUARNIZIONE BOILER	GASKET BOILER	(Until s/n 917...) a....h, n, o, p, q, r, s, t, u (From s/n 917...)
216	0617824202	007076	RESISTENZA BOILER (17 kW/400V)	HEAT. ELEMENT, BOILER (17 kW/400V)	a, b, g, h, p, q (until s/n 917...)
216	0617836400	0C5840	RESISTENZA BOILER (17 kW/400V)	HEAT. ELEMENT, BOILER (17 kW/400V)	a, b, g, h, p, q (From s/n 917...)
216	0617827100	007077	RESISTENZA BOILER (17 kW/200V)	HEAT. ELEMENT, BOILER (17 kW/200V)	e, f (up to s/n 909...)
216	0617836900	0C6024	RESISTENZA BOILER (17 kW/200V)	HEAT. ELEMENT, BOILER (17 kW/200V)	e, f (from s/n 909...)
216	0617827200	007078	RESISTENZA BOILER (17 kW/230V)	HEAT. ELEMENT, BOILER (17 kW/230V)	c, d (up to s/n 902...)
216	0617837402	0C5843	RESISTENZA BOILER (17 kW/230V)	HEAT. ELEMENT, BOILER (17 kW/230V)	c, d (from s/n 902...)
216	0617827300	0C1608	RESISTENZA BOILER (17 kW/440V)	HEAT. ELEMENT, BOILER (17 kW/440V)	n, o, r, s (up to s/n 917...)
216	0617838300	0C5846	RESISTENZA BOILER (17 kW/440V)	HEAT. ELEMENT, BOILER (17 kW/440V)	n, o, r, s (from s/n 917...)
216	0617828900	0C1482	RESISTENZA BOILER (17 kW/208V USA)	HEAT. ELEMENT, BOILER (17 kW/208V USA)	T (up to s/n 902...)
216	0617837100	0C5821	RESISTENZA BOILER (17 kW/208V USA)	HEAT. ELEMENT, BOILER (17 kW/208V USA)	T (from s/n 902...)
216	0617829500	0C1499	RESISTENZA BOILER (17 kW/240V USA)	HEAT. ELEMENT, BOILER (17 kW/240V USA)	U (up to s/n 902...)
216	0617837700	0C5824	RESISTENZA BOILER (17 kW/240V USA)	HEAT. ELEMENT, BOILER (17 kW/240V USA)	u (from s/n/ 902...)
217	0543816800	002874	OR BOILER	OR BOILER	a....h, n, o, p, q, r, s, t, u
218	0527898600	0C4821	FLANGIA BOILER	FLANGE	a....h, n, o, p, q, r, s, t, u
219	0515857001	055347	DISTANZIALE PER Sonda L=9	SPACER	a....h, n, o, p, q, r, s, t, u
220	0543839600	0C3442	GUARNIZIONE PORTELLO	GASKET	a, c, e, g, n, p, r, t, u
221	0J89061403	0C3443	PORTELLO ISPEZIONE	INSPECTION COVER	a, c, e, g, n, p, r, t, u
222	0546821401	-	PANNELLO FRONTALE INFERIORE	PANEL	b, d, f, h, i, l, m, o, q, s
224	0544820101	0C5283	TUBO FLESSIBILE BOILER	BOILER HOSE	Level A, Level B
			Pagina 5	Page 5	
300	0548869900	0C3221	MANOPOLA	HANDLE	
301	0214114900	051263	CONTRODADO	LOCK NUT	
302	0508836400	002727	RONDELLA	DISK	
303	0516807301	002662	BOCCOLA	BUSH	
304	0675838203	007057	MEMBRANA LIV. A	LAYER LEV. A	a, c, e, g, n, p, r, t, u
304	0675838902	007058	MEMBRANA LIV. B	LAYER LEV. B	b, d, f, h, o, q, s
304	0675854800	0C5067	MEMBRANA LIV. C	LAYER LEV. C	i, l, m
305	0873879401	0C4283	CRUSCOTTO LIV. A (NO MEMBRANA)	CONTROL PANEL LEV. A (NO LAYER)	a, c, e, g, n, p, r, t, u
305	0873880200	0C4284	CRUSCOTTO LIV. B (NO MEMBRANA)	CONTROL PANEL LEV. B (NO LAYER)	b, d, f, h, o, q, s
305	0873894200	0C4894	CRUSCOTTO LIV. C (NO MEMBRANA)	CONTROL PANEL LEV. C (NO LAYER)	i, l, m
307	0675837902	0C0043	SCHEDA USER INTERFACE LIV. A	USER INTERFACE BOARD, LEV. A	a, c, e, g, n, p, r, t, u
307	0675838802	0C0041	SCHEDA USER INTERFACE LIV. B	USER INTERFACE BOARD, LEV. B	b, d, f, h, o, q, s
307	0675854600	0C4891	SCHEDA USER INTERFACE LIV. C	USER INTERFACE BOARD, LEV. C	i, l, m
308	0675837808	0C0042	SCHEDA POWER COP20 LIV	MAIN POWER LIV. A-B-C	

10 Gn 1/1 Electric steam - convection oven Forno convezione - vapore elettrico 10 Gn 1/1					
Pos	Factory Code	6DGT Code	Descrizione	Description	Ref./Note
309	0548836902	002670	A-B-C	PROLONG	
311	0652800901	058771	PROLUNGA PULSANTE	FUSE FAST 6.3 A	a,...., h, i, l, m, r, s
311	0652805100	0C2230	FUSIBILE RAPIDO 6.30 A	FUSE FAST 6.3 x 3.2A	n, o, p, q
311	0652803900	0C2301	FUSIBILE RAPIDO 6.30 x3.2A	FUSE T 800 mA	a,...., h, i, l, m, r, s
311	0652804900	0C3650	FUSIBILE 800 mA	FUSE 3,15A	n, o, p, q
311	0652803300	0C1480	FUSIBILE 3,15A	FUSE OMEGA 5X20 6,3A T	t, u
312	0652802100	0F0031	FUSIBILE OMEGA 5X20 6,3A T	FUSE HOLDER	a,...., h, i, l, m, r, s, t, u
312	0652804800	0C2228	PORTAFUSIBILE	FUSE HOLDER	n, o, p, q
313	0646812200	007042	PORTAFUSIBILE	LIMITER, CAVITY	a, b,...., s
313	0646810802	006314	LIMITATORE, CELLA	LIMITER, CAVITY	t, u
314	0508840801	002628	LIMITATORE, CELLA	FLANGE	
315	0574804900	002627	FLANGIA	GLASS	
316	0543817202	002626	VETRO	GASKET	
317	0660808300	0C4396	GUARNIZIONE	HALOGEN LAMP	
317	0660400100	0C9877	LAMPADA ALOGENA	HALOGEN LAMP	t from 4371...
318	0660806401	007055	LAMPADA ALOGENA	LAMP HOLDER	
319	0508896801	007081	PORTALAMPADA	CLOSER	
320	0646812801	0C0883	FARFALLA	MOTOREDUCER	a, b,...., s
320	0646813500	0C1479	MOTORIDUTTORE	MOTOREDUCER	t, u
321	0516892600	0C4251	MOTORIDUTTORE	SHAFT	
322	0543828600	007053	ASTA	GASKET	
323	0831828500	0C4285	GUARNIZIONE	DUCT, AIR	
324	0624811000	0C4106	CONDOTTO ARIA	FAN	
325	0694605400	049303	VENTILATORE	FILTER	a, b,...., s
326	0639808600	0F0112	FILTRO ANTIDISTURBO	TERMINAL BOARD	
			MORSETTIERA DI		
			ALIMENTAZIONE		
327	0694604400	047541	CONDENSATORE 12.5 Mf	CAPACITOR	
328	0624811600	0C4460	TRASFORMATORE	TRANSFORMER	a, b, c, d, g, h, i, l, m, r, s
328	0624807100	007046	TRASFORMATORE	TRANSFORMER	e, f
328	0624807700	0C0949	TRASFORMATORE	TRANSFORMER	n, o, p, q
329	0648803001	058557	RELE'	RELE'	a,...., h, n, o, p, q, r, s,
329	0648722900	088267	RELE'	RELE'	t, u
330	0624807002	007047	ALIMENTATORE SWITCHING	SWITCHING FEEDER	a, c, e, g, n, p, r, t, u
331	0648807300	088477	CONTATTORE K3-10A	CONTACTOR K3-10°	a, b, g, h, i, l, n, o
331	0648807400	006879	CONTATTORE K3-18A	CONTACTOR K3-18A	a, b, g, h, i, l, n, o
331	0648807700	007080	CONTATTORE K3-32A	CONTACTOR K3-32A	c, d, e, f, m, t, u
335	0648802601	056466	RELE'	RELE'	t, u
336	646814900	0C2983	LIMITATORE, BOILER	LIMITER, BOILER	a,...., h, n, o, p, q, r, s, t, u
344	0831844900	0C4930	ASSIEME FILTRO CRUSCOTTO	ASS. FILTER CONTROL PANEL	
345	0806862100	*	FILTRO CRUSCOTTO	FILTER CONTROL PANEL	
Pagina 6					
400	0831849200	0C4862	PORTATEGLIE DX P60	TRAY SUPPORT DX P60	a, b, c, d, e, f, i, m,
400	0831852400	0C5015	PORTATEGLIE DX P80	TRAY SUPPORT DX P80	g, h, l
401	0831848900	0C4861	PORTATEGLIE SX P60	TRAY SUPPORT SX P60	a, b, c, d, e, f, i, m,
401	0831852300	0C5014	PORTATEGLIE SX P80	TRAY SUPPORT SX P80	g, h, l
402	0806872800	0C4961	SUPPORTO CON S.G.	SUPPORT S.G.	
403	0511828100	0C5620	SUPPORTO	SUPPORT	
			SONDE DI TEMPERATURA	TEMPERATURE	

10 Gn 1/1 Electric steam - convection oven Forno convezione - vapore elettrico 10 Gn 1/1					
<i>Pos</i>	<i>Factory Code</i>	<i>6DGT Code</i>	<i>Descrizione</i>	<i>Description</i>	<i>Ref./Note</i>
	0830898900 0830899000 0830899100	0C0324 0C0325 0C0326	SONDA CELLA (L 400) SONDA BOILER (L 800) SONDA BYPASS (L 1200)	PROBES CAVITY PROBE (L 400) BOILER PROBE (L 800) BYPASS PROBE (L 1200)	